

This Drawing is the property of J.S.T.(U.K.) Ltd.  
It must not be copied or used for manufacturing  
without written permission from J.S.T.(U.K.) Ltd.

**UNCONTROLLED  
CUSTOMER ISSUE**

Page 1 / 2

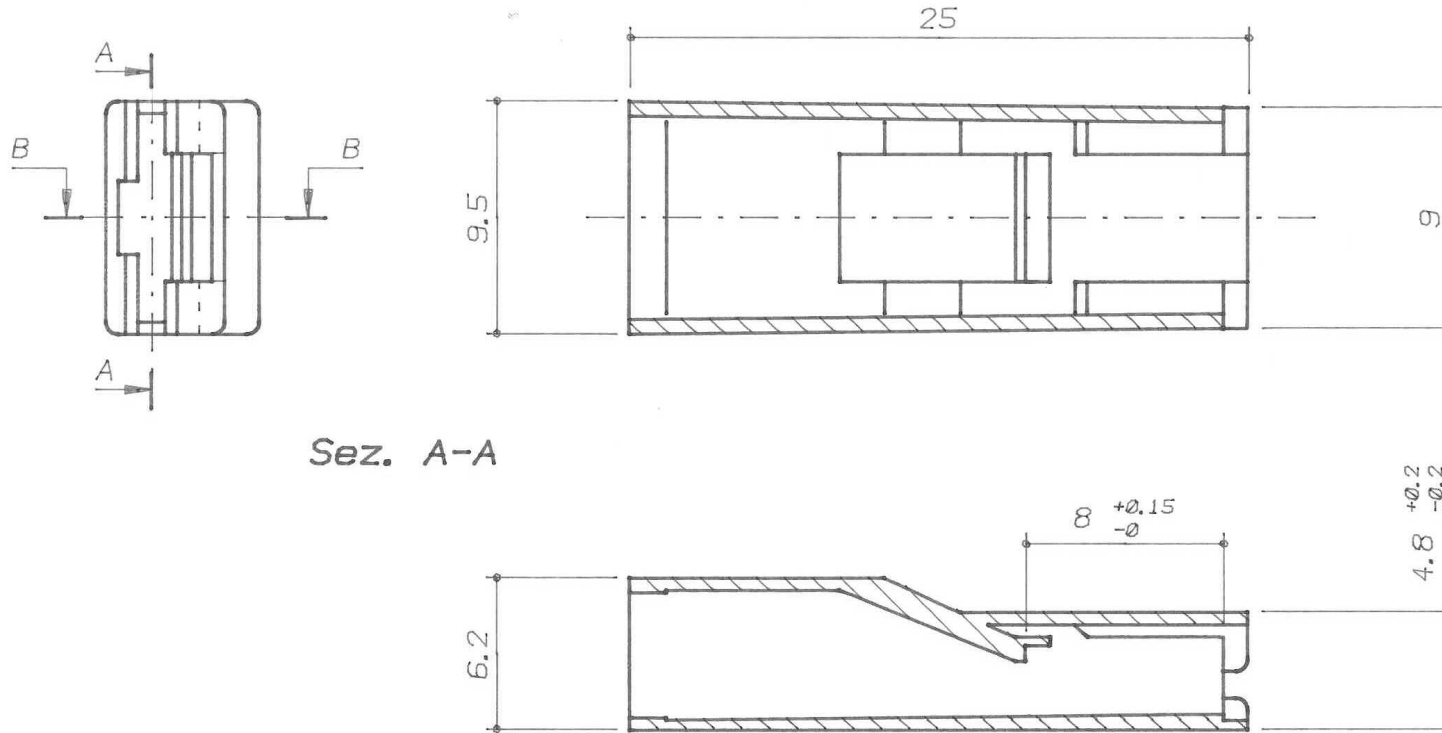
CS-63N004V0	63N004V0	PA66	UL94V-0	Natural	110	--	
CS-63N004STY	63N004STY	PA46	UL94V-2	Natural	150	--	
01022-250 Red	63N304	PA66	UL94V-2	Red	110	E172855 (M)	
01022-250 Green	63N404	PA66	UL94V-2	Green	110	E172855 (M)	
01022-250 Brown	63NMR04	PA66	UL94V-2	Brown	110	E172855 (M)	
01022-250 Blue	63N604	PA66	UL94V-2	Blue	110	E172855 (M)	
01022-250 Black	63N504	PA66	UL94V-2	Black	110	E172855 (M)	
01022-250	63N004	PA66	UL94V-2	Natural	110	E172855 (M)	
<b>JST Part Number</b>	<b>Mfg Number</b>	<b>Material</b>	<b>Flame Class</b>	<b>Colour</b>	<b>Max Operating Temp (°C)</b>	<b>UL Card No.</b>	<b>//</b>

<b>Revision Record</b>		
	Add suffixes; 304,004STY, 004V0	31.10.02
	Add suffixes; 004,504,604,MR04,404	31.10.02
	<b>Modification Detail</b>	<b>Date</b>
<b><i>JST</i></b>		

<b>Part Description &amp; General Details:</b>		
Housing for 6.3 (.250) receptacle. Applicable JST terminal; STO-**(*)-250*(-*)		
<b>Series:</b>	63 Series	
<b>Drawing Ref:</b>	CS63N004-241194	
<b>Issues by:</b>	ZG	31.10.02
<b>Approved by:</b>	AR	31.10.02

This Drawing is the property of J.S.T.(U.K.) Ltd.  
It must not be copied or used for manufacturing  
without written permission from J.S.T.(U.K.) Ltd.

**UNCONTROLLED  
CUSTOMER ISSUE**



Sez. A-A

Revision Record		
	Modification Detail	Date
	Add suffixes; 304,004STY, 004V0	31.10.02
	Add suffixes; 004,504,604,MR04,404	31.10.02

**JST**

Part Description & General Details:		
Housing for 6.3 (.250) receptacle. Applicable JST terminal; STO-**(*)-250*(-*)		
Series:	63 Series	
Drawing Ref:	CS63N004-241194	
Issues by:	ZG	31.10.02
Approved by:	AR	31.10.02

## X-ON Electronics

Largest Supplier of Electrical and Electronic Components

*Click to view similar products for [jst manufacturer](#):*

Other Similar products are found below :

[GS3-0.5](#) [GS8-6](#) [B5B-XH-A](#) [B5P-VH](#) [B7B-XH-A](#) [B8B-PH-SM4-TB](#) [BM06B-SRSS-TB](#) [FVGS5-6](#) [B2B-ZR-SM4-TF](#) [B34B-PHDSS-B\(LF\)\(SN\)](#) [B3B-ZR-SM4-TF](#) [B4PS-VH](#) [B6B-PH-SM4-TB](#) [B6B-XH-A](#) [B8B-PH-K-S](#) [B8B-ZR-SM4-TF](#) [B8PS-VH](#) [BM04B-SRSS-TB](#) [IDH-KR-12](#) [10HR-4K](#) [WC-ZE2426](#) [WC-691](#) [WC-122](#) [FVDDF5.5-375A \(LF\)](#) [FVGS12-6 \(LF\)](#) [FVWS2-S3.3 \(LF\)](#) [FVWS5.5-5 \(LF\)](#) [B6PS-VH\(LF\)\(SN\)](#) [FNGS12-6](#) [TWE0.5-8](#) [FVGS4-1 \(LF\)](#) [HILR-06VF-1-S](#) [WC-GVH2630](#) [WC-PUD2](#) [S10B-PH-SM4-TB\(LF\)\(SN\)](#) [B2B-EH-A-TW \(LF\)\(SN\)](#) [B4B-EH-A-TW \(LF\)\(SN\)](#) [B4B-XH-TW \(LF\)\(SN\)](#) [B9B-XH-A](#) [BM02B-GHS-TBT](#) [BM03B-GHS-TBT](#) [BM04B-GHS-TBT](#) [BM06B-GHS-TBT](#) [BM10B-GHS-TBT](#) [10FPZ-SM-TF\(LF\)\(SN\)](#) [YRS-852](#) [B04B-VYHSK-M-1](#) [B4B-PH-SM4-GW-TB](#) [B2B-ZR-SM4-TFT\(LF\)\(SN\)](#) [S24B-PADSS-1\(LF\)\(SN\)](#)