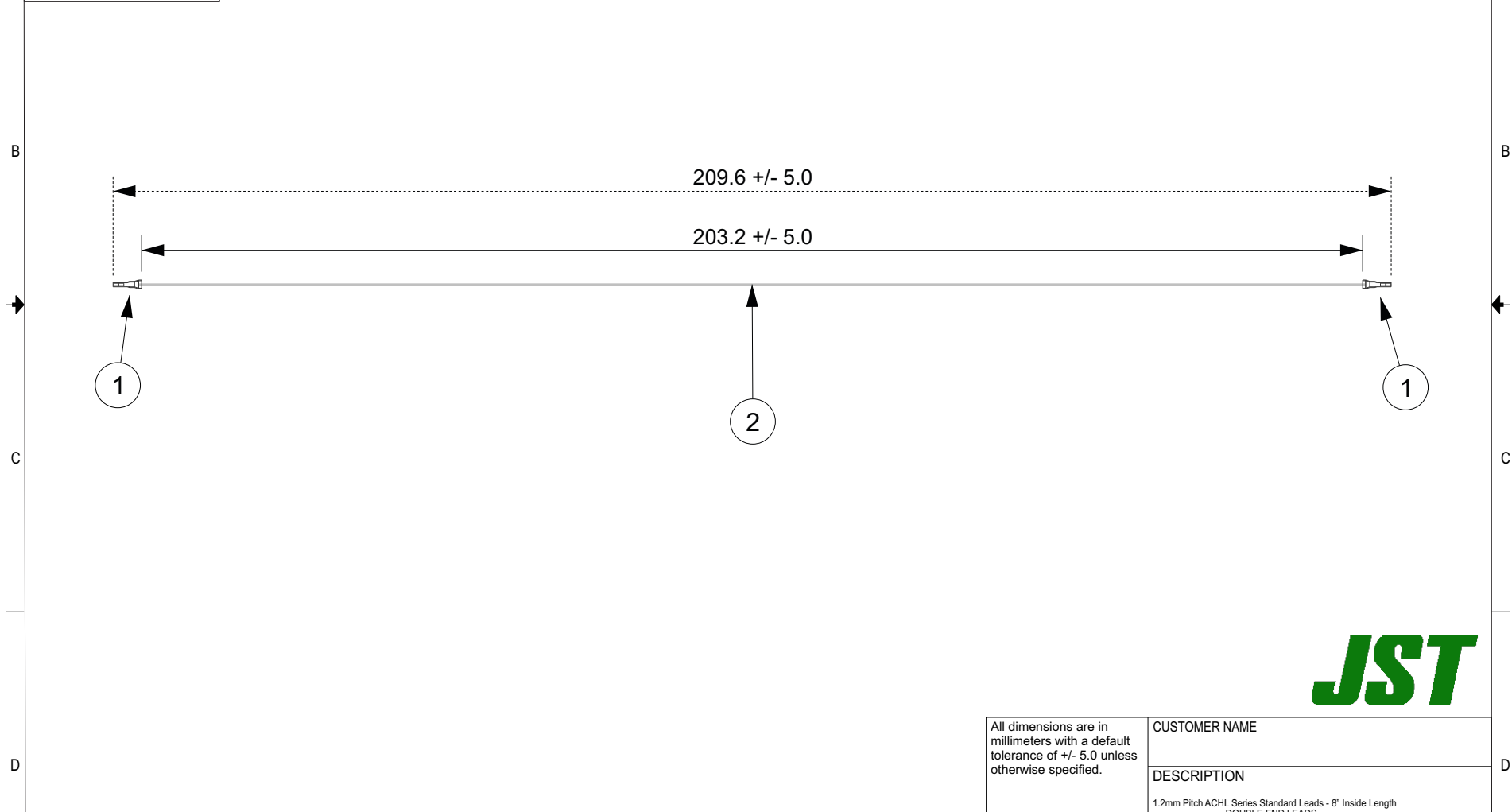


THIS DRAWING CONTAINS INFORMATION THAT IS PROPRIETARY TO J.S.T. AND SHALL NOT BE USED OR SHOWN WITHOUT WRITTEN PERMISSION.

1	2	3	4	5	6	7	8	
Item No.	Part No.	Description						APPLICABLE HOUSINGS
1	SACHL-003G-P0.2	ACH Connector Contact						NO. OF CIRCUITS
2	UL1571 (spec OD), 28 AWG	White						HOUSING PART NO.
							2	
							ACHLR-02V-S	

<u>Electrical Specifications</u>
Current: 2.0A AC/DC
Voltage: 50V AC/DC



All dimensions are in millimeters with a default tolerance of +/- 5.0 unless otherwise specified.	CUSTOMER NAME			
	DESCRIPTION			
Drawn By: Larissa Mosley Checked By: Steven Pilkington	SIZE	CUSTOMER PART NO.	PART NO.	REV
	SCALE	DRAWING NO.	DATE	
1:1		GAM-320	4/24/2018	

ZONE	REV	DESCRIPTION	DATE	APPROVED
	1	Add Electrical Specifications	6/29/2018	LM

1      2      3      4      5      6      7      8

## X-ON Electronics

Largest Supplier of Electrical and Electronic Components

*Click to view similar products for [Ethernet Cables / Networking Cables](#) category:*

*Click to view products by [JST](#) manufacturer:*

Other Similar products are found below :

[73-7795-1](#) [MCJB2-10P6Q7-120](#) [84909-0204](#) [1200700174](#) [1200860368](#) [E16A06002M030](#) [E200102-009-S1](#) [AX105346-EW](#) [MT14-187L](#)  
[MWDM2L-51GS-6J1-2.82B](#) [ERWPAB3002M005](#) [190-038045-01](#) [NK5EPC1GRY](#) [NK5EPC4Y](#) [1969343-6](#) [ICD056GVP163D-C0](#)  
[C5UMB3FBG](#) [C631208025](#) [C631208035](#) [C6F1106015](#) [2142758-2](#) [2168427-2](#) [21949-1](#) [2J1866A](#) [RJF SFTP 5E 0500](#) [AX100351](#)  
[UTPCH14GY](#) [45-5684](#) [100345-1301](#) [MWDM2L-25P-8K1-.500B](#) [MWDM6L-31S-6C4-.375H](#) [73-7793-1](#) [74764-1101](#) [WHU18-3636-048](#)  
[RJF2SA2G05100BTX](#) [1R4000A39M030](#) [UTPSP6GY](#) [UTPSP2GY](#) [UTPSP10GY](#) [UTPCH5GY](#) [UTP28SP15M](#) [UTP28CH100OR](#)  
[74764-2301](#) [TRD815Y-10](#) [TRD855SIG-75](#) [E66A06002M020](#) [NPC-5E-010-GY](#) [SAC-5P-MS/ 1.0-920/FS SCO AR](#) [1-3636-601-5211](#) [1-3636-600-5212](#)