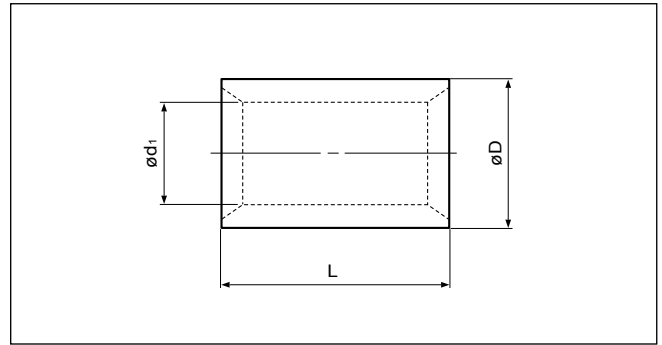


Solderless splices

**PARALLEL**

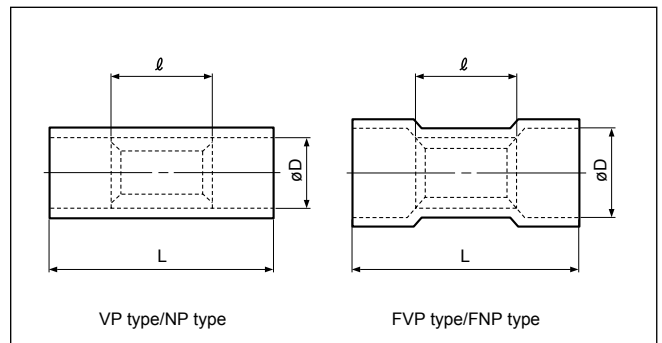
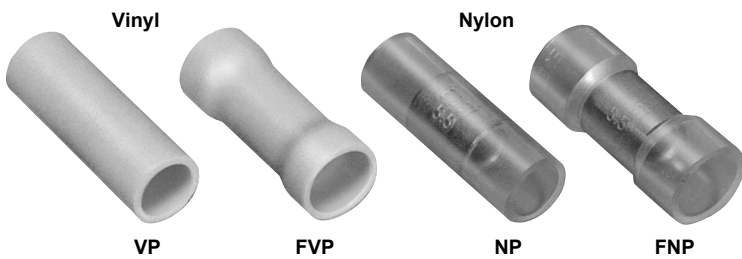


**Non-insulated**

Certificate No.: E42024 LR20812 JQ0607002

Applicable Wire AWG#(mm <sup>2</sup> )	Part No.	Standard	Dimensions mm (in.)			Tool No.										Qty/box									
			L	ø D	ø d <sub>1</sub>	YHT-2210	YHT-8S	YA-1	YA-2	YA-4	YA-5	YPT-60N	YPT-150-1	BCT-0514L	BCT-860L		BCT-8150L	E-4 YF-1 E-1 P-1	YET-80-1	YET-150-1	YET-300-1	YET-300N			
22 to 16 (0.25 to 1.65)	P-1.25		8.0 (.315)	3.3 (.130)	1.7 (.067)	o		o	o	o			o											1,000	
16 to 14 (1.04 to 2.63)	P-2		8.0 (.315)	4.1 (.161)	2.3 (.091)	o		o	o	o			o												
12 to 10 (2.63 to 6.64)	P-5.5		8.5 (.335)	5.4 (.213)	3.4 (.134)	o		o	o	o			o												
8 (6.64 to 10.52)	P-8			9.5 (.374)	7.0 (.276)	4.5 (.177)	o				o	o	o	o	o	o	o	o	o	o	o	o	o	o	500
6 (10.52 to 16.78)	P-14			11.0 (.433)	8.9 (.350)	5.8 (.228)					o	o	o	o	o	o	o	o	o	o	o	o	o	o	200
4 (16.78 to 26.66)	P-22			13.5 (.531)	11.3 (.445)	7.7 (.303)						o	o	o		o	o	o	o	o	o	o	o	o	100
2 (26.66 to 42.42)	P-38			16.5 (.650)	13.2 (.520)	9.4 (.370)						o	o	o		o	o	o	o	o	o	o	o	o	
1/0 (42.42 to 60.57)	P-60			19.0 (.748)	15.3 (.602)	11.4 (.449)						o	o	o		o	o	o	o	o	o	o	o	o	
2/0 (60.57 to 76.28)	P-70			19.0 (.748)	17.5 (.689)	13.3 (.524)						o				o									50
3/0 (76.28 to 96.3)	P-80			19.5 (.768)	19.5 (.768)	14.5 (.571)						o				o									25
4/0 (96.3 to 117.2)	P-100		20.0 (.787)	22.1 (.870)	16.4 (.646)						o				o										
250 to 300MCM (117.2 to 152.05)	P-150		27.0(1.063)	26.4(1.039)	19.5 (.768)						o				o									20	
350MCM (152.05 to 192.6)	P-180		28.5(1.122)	28.5(1.122)	21.0 (.827)																o	o			
400MCM (192.6 to 242.27)	P-200		32.0(1.260)	32.4(1.276)	24.0 (.945)																o	o			
N.A. (250)	P-250		32.0(1.260)	35.0(1.378)	26.0(1.024)																o	o		10	
600 to 650MCM (242.27 to 325)	P-325		37.0(1.457)	37.0(1.457)	28.0(1.102)																o	o			

Note: 1) Products with the JIS mark conform to JIS C2806.  
 2) "Applicable Wires" indicates the total cross-sectional area.  
 3) Delivery lead times may vary depending on the product. Contact JST for details.



**Vinyl or Nylon insulated**

Certificate No.: E42024 LR20812

Applicable Wire AWG#(mm <sup>2</sup> )	Part No.		Standard	Dimensions mm (in.)			Color	Tool No.						Qty/box	
	Vinyl	Nylon		L	ℓ	ø D		YNT-2216	YNT-1614	YNT-1210S	YA-1	YA-2	YA-4	BCT-0514L	Vinyl
22 to 16 *(0.25 to 1.65)	VP-1.25	NP-1.25		16.0 (.630)	8.0 (.315)	3.2 (.126)	o		o	o	o	o	o		1,000
	FVP-1.25	FNP-1.25				4.0 (.157)									
16 to 14 (1.04 to 2.63)	VP-2	NP-2		16.0 (.630)	8.0 (.315)	3.9 (.154)	o		o	o	o	o	o	1,000	
	FVP-2	FNP-2				4.5 (.177)									500
12 to 10 (2.63 to 6.64)	VP-5.5	NP-5.5		20.5 (.807)	8.5 (.335)	5.4 (.213)	o		o		o	o		500	
	FVP-5.5	FNP-5.5				6.8 (.268)									250

Note: 1) \*The crimping will be more secure if the total cross-sectional area of the wire is at least 0.5 mm<sup>2</sup>.  
 Examples: If the cross-sectional area of the wire is 0.3 mm<sup>2</sup>, fold the wire in two when crimping the terminal.  
 If the cross-sectional area of the wire is 0.5 mm<sup>2</sup>, crimp the terminal onto the wire as it is.  
 2) "Applicable Wires" indicates the total cross-sectional area.  
 3) Delivery lead times may vary depending on the product. Contact JST for details.

# PARALLEL

## Wire combination table for parallel splices specified by UL

AWG#	↓ Number of wires																			P-1.25																								
22	2	2	2	1	1	1	1	1	1	1	1	1	1	1	1	1	1	1	1	1	22	2	2	2	1	1	1	1	1	1	1	1	1	1	1	1	1	1	1	1				
20	1			2	1	1	1							3	2	2	1	1			20	1			2	1	1	1						3	2	2	1	1						
18		1			1			1							1		1			2	18		1			1					1				1				2					
16									1										1		16																		1					
AWG#	↓ Number of wires																			P-2																								
22	2	2	2	2	1	1	1	1	1	1	1	1	1	1	1	1	1	1	1	1	22	2	2	2	2	1	1	1	1	1	1	1	1	1	1	1	1	1	1	1				
20	1				2	1	1	1	1									3	2	2	20	1				2	1	1	1					3	2	2	2	1	1	1	1			
18		1				1								2	1	1				1	18		1				1				2	1	1					2	1	1	1	1		
16			1					1						1						1	16			1					1					1					1		2	1	1	1
AWG#	↓ Number of wires																			P-5.5																								
18	3	2	2	1	1	1	1														18	3	2	2	1	1	1	1																
16	1	1		1					2	1	1	1									16	1	1		1					2	1	1	1											
14					1					1										2	14					1					1									2				
12						1									1						12						1								1									
10								1												1	10								1											1				
AWG#	↓ Number of wires																			P-8																								
16		1																			16		1																					
14			1																		14			1																				
12	2			1																	12	2			1																			
10		1	1	1																	10		1	1	1																			
AWG#	↓ Number of wires																			P-14																								
14		1																			14		1																					
12			1																		12			1																				
10	2																				10	2																						
8		1	1																		8		1	1																				
AWG#	↓ Number of wires																			P-22																								
10		1																			10		1																					
8	2		1																		8	2		1																				
6		1	1																		6		1	1																				
AWG#	↓ Number of wires																			P-38																								
8		1																			8		1																					
6	2																				6	2																						
4		1																			4		1																					
AWG#	↓ Number of wires																			P-60																								
6		1																			6		1																					
4	2																				4	2																						
2		1																			2		1																					
AWG#	↓ Number of wires																			P-70																								
6		1																			6		1																					
2	2																				2	2																						
1/0		1																			1/0		1																					
AWG#	↓ Number of wires																			P-80																								
4	1																				4	1																						
2/0	1																				2/0	1																						
AWG#	↓ Number of wires																			P-100																								
2	1																				2	1																						
2/0	1																				2/0	1																						
AWG#	↓ Number of wires																			P-150																								
2		1																			2		1																					
1/0			1	1																	1/0			1	1																			
2/0	2		1																		2/0	2		1																				
3/0		1	1																		3/0		1	1																				
AWG#	↓ Number of wires																			P-180																								
1/0		1																			1/0		1																					
2/0			1	1																	2/0			1	1																			
3/0	2		1																		3/0	2		1																				
4/0		1	1																		4/0		1	1																				
AWG#	↓ Number of wires																			P-200																								
2/0			1																		2/0			1																				
3/0		1																			3/0		1																					
4/0	2	1																			4/0	2	1																					
250/MCM			1																		250/MCM			1																				
AWG#	↓ Number of wires																			P-325																								
4/0	1																				4/0	1																						
250/MCM		2																			250/MCM		2																					
300/MCM	1																				300/MCM	1																						

Note: 1) The combinations indicated in the table conform to UL standards only.

## X-ON Electronics

Largest Supplier of Electrical and Electronic Components

*Click to view similar products for [Terminals](#) category:*

*Click to view products by [JST](#) manufacturer:*

Other Similar products are found below :

[00-054007-01074-6](#) [00-054007-70206-1](#) [00-054007-70210-8](#) [00-054007-70217-7](#) [00-054007-70228-3](#) [00-054007-70256-6](#) [00-054007-70316-7](#) [00-054007-49560-4](#) [00-054007-70209-2](#) [00-054007-70231-3](#) [00-054007-70241-2](#) [00-054007-70242-9](#) [00-054007-70246-7](#) [00-054007-70263-4](#) [00-054007-70288-7](#) [00-054007-70290-0](#) [00-054007-70300-6](#) [00-054007-70304-4](#) [01-2900-1-04412](#) [00581P0075](#) [600TS-10](#) [60205-1](#) [604200-1](#) [605601-1](#) [60598-1-CUT-TAPE](#) [60617-1-C](#) [61314-6-C](#) [61810-3](#) [62149-1](#) [626-0194](#) [62-NBM-A](#) [62-SP](#) [63-S](#) [M55155/059I03](#) [M55155/079C01](#) [M55155/099B03](#) [M55155/099H02](#) [M55155/109H01](#) [M55155/109H02](#) [M55155/12XH05](#) [M55155/16XH02](#) [M55155/29-5S](#) [M55155/29XJ08](#) [M55155/30-6S](#) [M55155/30-9S](#) [M55155/30XI09](#) [696683-1](#) [696861-1](#) [696999-1](#) [M86700006](#)