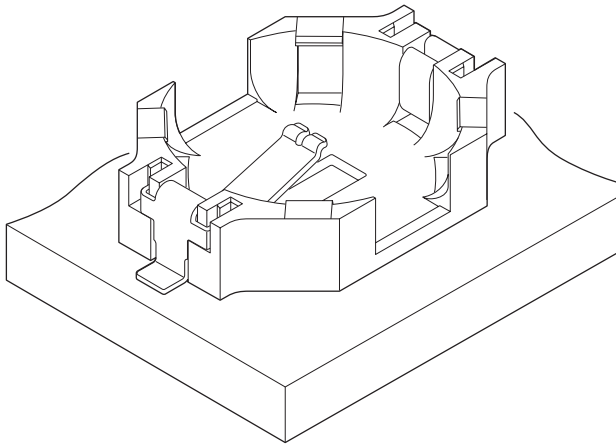


PB CONNECTOR



Connector for button batteries used in the compact mobile equipment such as mobile phones. Mounting cost will be reduced by using this connector in place of manual soldering. And, button batteries can be more easily disassembled after use for recycling's sake.

- Resistant to the shock
- Double contact point

Specifications

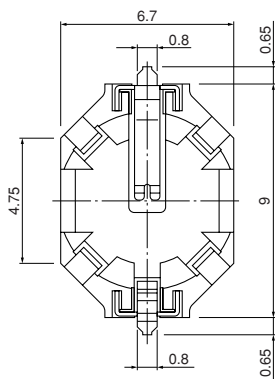
- Applicable batteries: 614 type battery (ϕ 6.8 mm \times 1.4 mm height)
621 type battery (ϕ 6.8 mm \times 2.1 mm height)
 - Temperature range: -25°C to +85°C
(including temperature rise in applying electrical current)
 - Contact resistance: Initial value/ 100 m Ω max.
After environmental tests/ 120 m Ω max.
 - Insulation resistance: 1,000 M Ω min.
 - Withstanding voltage: 500 VAC/minute
- * Refer to "General Instruction and Notice when using Terminals and Connectors" at the end of this catalog.
* Contact JST for details.
* Compliant with RoHS.

Standards

Recognized E60389

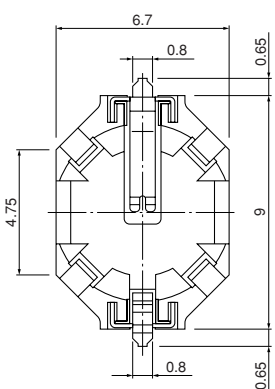
Connector

614 type



*The dimension should be measured from housing bottom surface.

621 type



*The dimension should be measured from housing bottom surface.

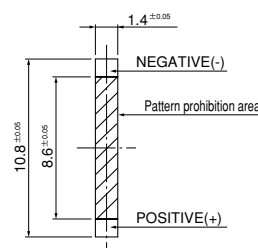
Type	Holder part	Model No.	Q'ty/reel
614	Resin hook	PB-614SS13-TF	2,000
621	Resin hook	PB-621SR13-TF	2,000

Material and Finish

Contact: Copper alloy, nickel-undercoated, gold-plated
Housing: Glass-filled LCP, UL94V-0, natural (ivory)

RoHS compliance

PB-614SS13-TF PB-621SR13-TF



Note: The above figure is the figure viewed from the connector mounting side.

X-ON Electronics

Largest Supplier of Electrical and Electronic Components

Click to view similar products for [Coin Cell Battery Holders](#) category:

Click to view products by [JST](#) manufacturer:

Other Similar products are found below :

[SMTU2450N-LF](#) [PDSN-11-D](#) [799-2007](#) [BH44AAB](#) [BH48DL](#) [BH8000](#) [MY-2430-01-R](#) [BS-16-B4AA006-R](#) [KH-CR1220-2](#) [BH-18650-A1AJ006](#) [BS-02-A1BK007](#) [BH-18650-A1AJ005](#) [BS-12-B3AA009-R](#) [BS-02-A1AK010-X](#) [BS-02-A1AJ010](#) [BS-03-A1AJ001](#) [MY-FJ-131-J-R](#) [MY-FJ-04-J-R](#) [BS-08-B2AA025](#) [BS-24-A1AJ017](#) [BH-18650-A5BJ001-2D](#) [BS-12-A1AJ002-Z](#) [BS-08-B2AA032](#) [MY-2032-04-R](#) [BS-621-B4AA001-R](#) [MY-ZJ-110](#) [MY-FJ-127-R](#) [BS-06-B4AA002-R](#) [MY-1220-04](#) [BH-AAA-A1AJ001](#) [BS-12-B3AA003-T](#) [MY-FJ-115II-R](#) [BS-06-B4AK001-R](#) [BH-18650-B1BA007](#) [MY-FJ-115II](#) [BE-13-017](#) [MY-2477-01](#) [BC-25-5PD-300](#) [BS-08-B2AA016-R](#) [MY-AAA-22-J](#) [MY-AA-14-J](#) [MY-AAA-24-J](#) [MY-2032-28](#) [BS-06-A4BK016](#) [MY-FJ-01](#) [MY-1025-01](#) [MY-AA-5355-J](#) [BS-05-A1BJ018](#) [MY-2032-25-R](#) [BH-AA-B1AJ011](#)