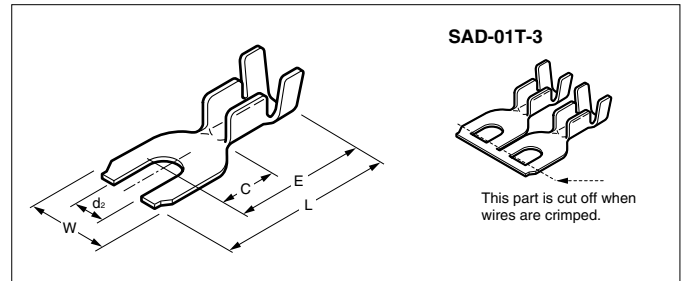


FORK TONGUE TERMINAL

With insulation grip



UL LISTED E42024

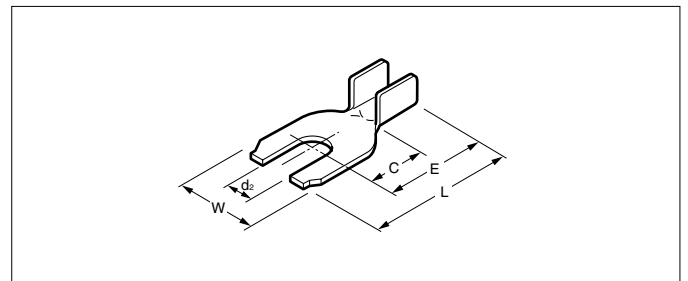
SF Certified LR20812

| Model No. | Standard | Applicable wire | | | Material | Finish | Dimensions(mm) | | | | | | Q'ty / reel | |
|-------------|--------------|-----------------|----------|----------------------|----------|------------|-----------------------|------|------|-----|-----|--------------------|-------------|-----|
| | | mm ² | AWG # | Insulation O.D. (mm) | | | d ₂ (dia.) | E | L | C | W | Material thickness | | |
| SAA-51-3 | UL LISTED SF | 0.5 to 2.0 | 20 to 14 | 2.6 to 3.8 | Brass | — | 3.2 | 13.0 | 16.8 | 5.8 | 7.2 | 0.5 | 7,500 | |
| SAA-51T-3 | | | | | | Tin-plated | | | | | | | | |
| SAA-51-3.7 | | | | | | — | 3.7 | | | | | | | |
| SAA-51T-3.7 | | | | | | Tin-plated | | | | | | | | |
| SAA-51-4 | | | | | | — | 4.3 | | | | | | | |
| SAA-51T-4 | | | | | | Tin-plated | | | | | | | | |
| SAB-51-5 | | | | | | — | 5.3 | | | | | | | 8.2 |
| SAB-51T-5 | | | | | | Tin-plated | | | | | | | | |
| *SAD-01T-3 | UL LISTED SF | 0.2 to 0.5 | 24 to 20 | Approx 2.0 | — | 3.2 | 11.0 | 14.7 | 5.2 | 6.3 | — | 5,000 | | |

RoHS compliance SAD-01T-3 displays (SN) on a label.

Note: The terminal denoted by * is a twin lead fork terminal and is used for crimping 2 piece terminals simultaneously onto 2 parallel wires like the TV feeder wires.

Without insulation grip



UL LISTED E42024

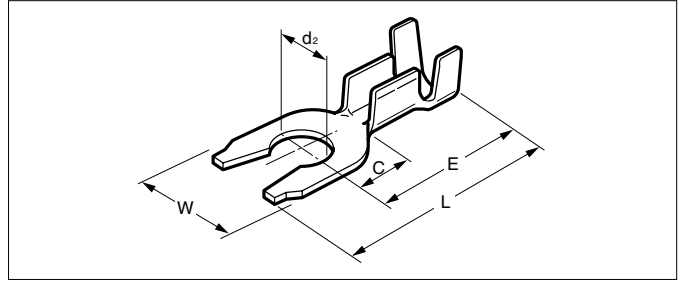
SF Certified LR20812

| Model No. | Standard | Applicable wire | | | Material | Finish | Dimensions(mm) | | | | | | Q'ty / reel |
|-------------|--------------|-----------------|----------|----------------------|----------|------------|-----------------------|------|------|-----|-----|--------------------|-------------|
| | | mm ² | AWG # | Insulation O.D. (mm) | | | d ₂ (dia.) | E | L | C | W | Material thickness | |
| SAA-50-3 | UL LISTED SF | 0.5 to 2.0 | 20 to 14 | — | Brass | — | 3.2 | 10.0 | 13.8 | 6.0 | 7.2 | 0.5 | 10,000 |
| SAA-50T-3 | | | | | | Tin-plated | | | | | | | |
| SAA-50-3.7 | | | | | | — | 3.7 | | | | | | |
| SAA-50T-3.7 | | | | | | Tin-plated | | | | | | | |
| SAA-50-4 | | | | | | — | 4.3 | | | | | | |
| SAA-50T-4 | | | | | | Tin-plated | | | | | | | |

RoHS compliance

FORK TONGUE TERMINAL

Locking type (With insulation grip)



UL Listed E42024

SP Certified LR20812

| Model No. | Standard | Applicable wire | | | Material | Finish | Dimensions(mm) | | | | | Q'ty / reel | |
|--------------|--------------|-----------------|----------|----------------------|----------|------------|-----------------------|------|------|-----|-----|-------------|--------------------|
| | | mm ² | AWG # | Insulation O.D. (mm) | | | d ₂ (dia.) | E | L | C | W | | Material thickness |
| SAA-21-3L | UL LISTED SP | 0.3 to 0.75 | 22 to 18 | 1.5 to 2.8 | Brass | — | 3.2 | 13.0 | 16.8 | 5.8 | 7.2 | 0.5 | 7,500 |
| SAA-21T-3L | | | | | | Tin-plated | | | | | | | |
| SAA-21-3.5L | | | | | | — | 3.7 | | | | | | |
| SAA-21T-3.5L | | | | | | Tin-plated | | | | | | | |
| SAA-21-4L | | | | | | — | 4.3 | | | | | | |
| SAA-21T-4L | | | | | | Tin-plated | | | | | | | |

RoHS compliance

Crimping machine, Applicator

| Contact | Crimping machine | Applicator | | |
|--------------|------------------|------------------|-----------|----------------------------|
| | | Crimp applicator | Dies | Crimp applicator with dies |
| SAA-21(T)-** | AP-K2N | MK-L | MK/SAA-21 | APLMK SAA21 |
| | | — | — | — |
| SAA-50(T)-** | | MK-L | MK/SAA-50 | APLMK SAA50 |
| | | — | — | — |
| SAA-51(T)-** | | MK-L | MK/SAA-51 | APLMK SAA51 |
| | | — | — | — |

| Contact | Crimping machine | Applicator | | |
|--------------|------------------|------------------|-----------|----------------------------|
| | | Crimp applicator | Dies | Crimp applicator with dies |
| SAB-51(T)-** | AP-K2N | MK-L | MK/SAB-51 | APLMK SAB51 |
| | | — | — | — |
| SAD-01(T)-** | | MK-L | MK/SAD-01 | APLMK SAD01 |
| | | — | — | — |

* Compliant with RoHS.

* Refer to "General Instruction and Notice when using Terminals and Connectors" at the end of this catalog.

* Contact JST for details.

X-ON Electronics

Largest Supplier of Electrical and Electronic Components

Click to view similar products for [Terminals](#) category:

Click to view products by [JST](#) manufacturer:

Other Similar products are found below :

[00-054007-01074-6](#) [00-054007-70206-1](#) [00-054007-70210-8](#) [00-054007-70217-7](#) [00-054007-70228-3](#) [00-054007-70256-6](#) [00-054007-70316-7](#) [00-054007-49560-4](#) [00-054007-70209-2](#) [00-054007-70231-3](#) [00-054007-70241-2](#) [00-054007-70242-9](#) [00-054007-70246-7](#) [00-054007-70263-4](#) [00-054007-70288-7](#) [00-054007-70290-0](#) [00-054007-70300-6](#) [00-054007-70304-4](#) [01-2900-1-04412](#) [00581P0075](#) [600TS-10](#) [604200-1](#) [605601-1](#) [60598-1-CUT-TAPE](#) [60617-1-C](#) [61314-6-C](#) [61810-3](#) [62149-1](#) [626-0194](#) [62-NBM-A](#) [62-SP](#) [63-S](#) [M55155/059I03](#)
[M55155/079C01](#) [M55155/099B03](#) [M55155/099H02](#) [M55155/109H01](#) [M55155/12XH05](#) [M55155/16XH02](#) [M55155/29-5S](#) [M55155/29XJ08](#)
[M55155/30-6S](#) [M55155/30-9S](#) [M55155/30XI09](#) [696683-1](#) [696861-1](#) [696999-1](#) [M86700006](#) [D18-110B-C](#) [D18-110B-M](#)