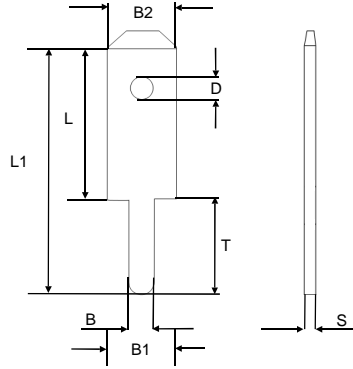


# PCB TAB TERMINALS

## 2.8mm PCB Tab Terminals

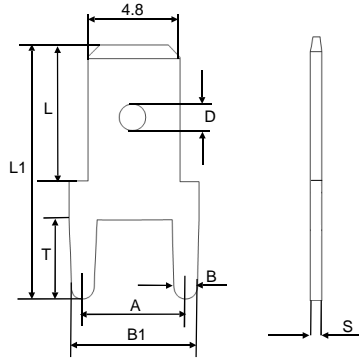


DIN 46342, part 1

Model No.	Material	Dimensions (mm)								
		T	L	L1	B1	B2	D	B	S	Ø Thru hole
TAB 378005.68(MS TIN)	Brass Tin Plated	3.8	6.7	10.5	2.8	2.8	1.4	1	0.5	0.9
TAB 378008.68(MS TIN)	Brass Tin Plated	3.8	6.7	10.5	2.8	2.8	1.4	1	0.8	1

Note: 1) Delivery lead times may vary depending on the product. Contact JST for details, these products are ONLY available from the following JST affiliates; J.S.T. (U.K.) Ltd, J.S.T. Belgium N.V., J.S.T. India Liaison Office, and JST-SouthAfrica.com.  
 2) In line with a policy of continual product development, JST reserves the right to change the specifications of the goods described in the catalogue at any time and without prior notice.

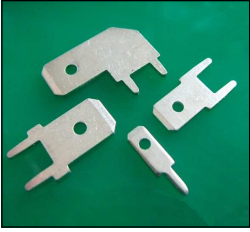
## 4.8mm PCB Tab Terminals



DIN 46342, part 1

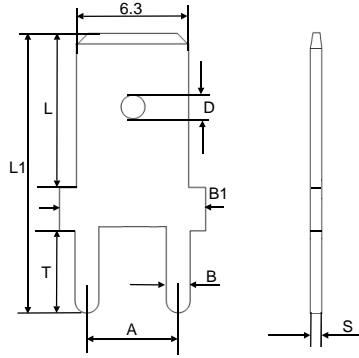
Model No.	Material	Dimensions (mm)								
		T	L	L1	B1	A	D	B	S	Ø Thru hole
TAB 382505.68(MS TIN)	Brass Tin Plated	4	6.4	12.5	6.3	5	1.5	1.3	0.5	1.3
TAB 382508.68(MS TIN)	Brass Tin Plated	4	6.4	12.5	6.3	5	1.5	1.3	0.8	1.3

Note: 1) Delivery lead times may vary depending on the product. Contact JST for details, these products are ONLY available from the following JST affiliates; J.S.T. (U.K.) Ltd, J.S.T. Belgium N.V., J.S.T. India Liaison Office, and JST-SouthAfrica.com.  
 2) In line with a policy of continual product development, JST reserves the right to change the specifications of the goods described in the catalogue at any time and without prior notice.



# PCB TAB TERMINALS

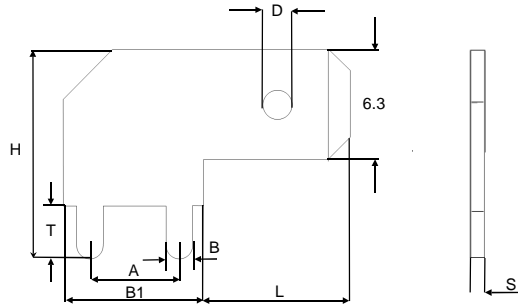
## 6.3mm PCB Tab Terminals



DIN 46342, part 1

Model No.	Material	Dimensions (mm)								
		T	L	L1	B1	A	D	B	S	Ø Thru hole
TAB 3866A.68(MS TIN)	Brass Tin Plated	3.6	8	14.2	8	5	1.65	1.3	0.8	1.3

Note: 1) Delivery lead times may vary depending on the product. Contact JST for details, these products are ONLY available from the following JST affiliates; J.S.T. (U.K.) Ltd, J.S.T. Belgium N.V., J.S.T. India Liaison Office, and JST-SouthAfrica.com.  
 2) In line with a policy of continual product development, JST reserves the right to change the specifications of the goods described in the catalogue At any time and without prior notice.



DIN 46342, part 1

Model No.	Material	Dimensions (mm)								
		T	H	A	B1	L	D	B	S	Ø Thru hole
TAB 3867B.68(MS TIN)	Brass Tin Plated	3	12	5	8	8.2	1.65	1.3	0.8	1.3

Note: 1) Delivery lead times may vary depending on the product. Contact JST for details, these products are ONLY available from the following JST affiliates; J.S.T. (U.K.) Ltd, J.S.T. Belgium N.V., J.S.T. India Liaison Office, and JST-SouthAfrica.com.  
 2) In line with a policy of continual product development, JST reserves the right to change the specifications of the goods described in the catalogue At any time and without prior notice.

## X-ON Electronics

Largest Supplier of Electrical and Electronic Components

*Click to view similar products for [jst manufacturer](#):*

Other Similar products are found below :

[GS3-0.5](#) [GS8-6](#) [B5B-XH-A](#) [B5P-VH](#) [B7B-XH-A](#) [B8B-PH-SM4-TB](#) [BM06B-SRSS-TB](#) [FVGS5-6](#) [B2B-ZR-SM4-TF](#) [B34B-PHDSS-B\(LF\)\(SN\)](#) [B3B-ZR-SM4-TF](#) [B4PS-VH](#) [B6B-PH-SM4-TB](#) [B6B-XH-A](#) [B8B-PH-K-S](#) [B8B-ZR-SM4-TF](#) [B8PS-VH](#) [BM04B-SRSS-TB](#) [IDH-KR-12](#) [10HR-4K](#) [WC-ZE2426](#) [WC-691](#) [WC-122](#) [FVDDF5.5-375A \(LF\)](#) [FVGS12-6 \(LF\)](#) [FVWS2-S3.3 \(LF\)](#) [FVWS5.5-5 \(LF\)](#) [B6PS-VH\(LF\)\(SN\)](#) [FNGS12-6](#) [TWE0.5-8](#) [FVGS4-1 \(LF\)](#) [HILR-06VF-1-S](#) [WC-GVH2630](#) [WC-PUD2](#) [S10B-PH-SM4-TB\(LF\)\(SN\)](#) [B2B-EH-A-TW \(LF\)\(SN\)](#) [B4B-EH-A-TW \(LF\)\(SN\)](#) [B4B-XH-TW \(LF\)\(SN\)](#) [B9B-XH-A](#) [BM02B-GHS-TBT](#) [BM03B-GHS-TBT](#) [BM04B-GHS-TBT](#) [BM06B-GHS-TBT](#) [BM10B-GHS-TBT](#) [10FPZ-SM-TF\(LF\)\(SN\)](#) [YRS-852](#) [B04B-VYHSK-M-1](#) [B4B-PH-SM4-GW-TB](#) [B2B-ZR-SM4-TFT\(LF\)\(SN\)](#) [S24B-PADSS-1\(LF\)\(SN\)](#)