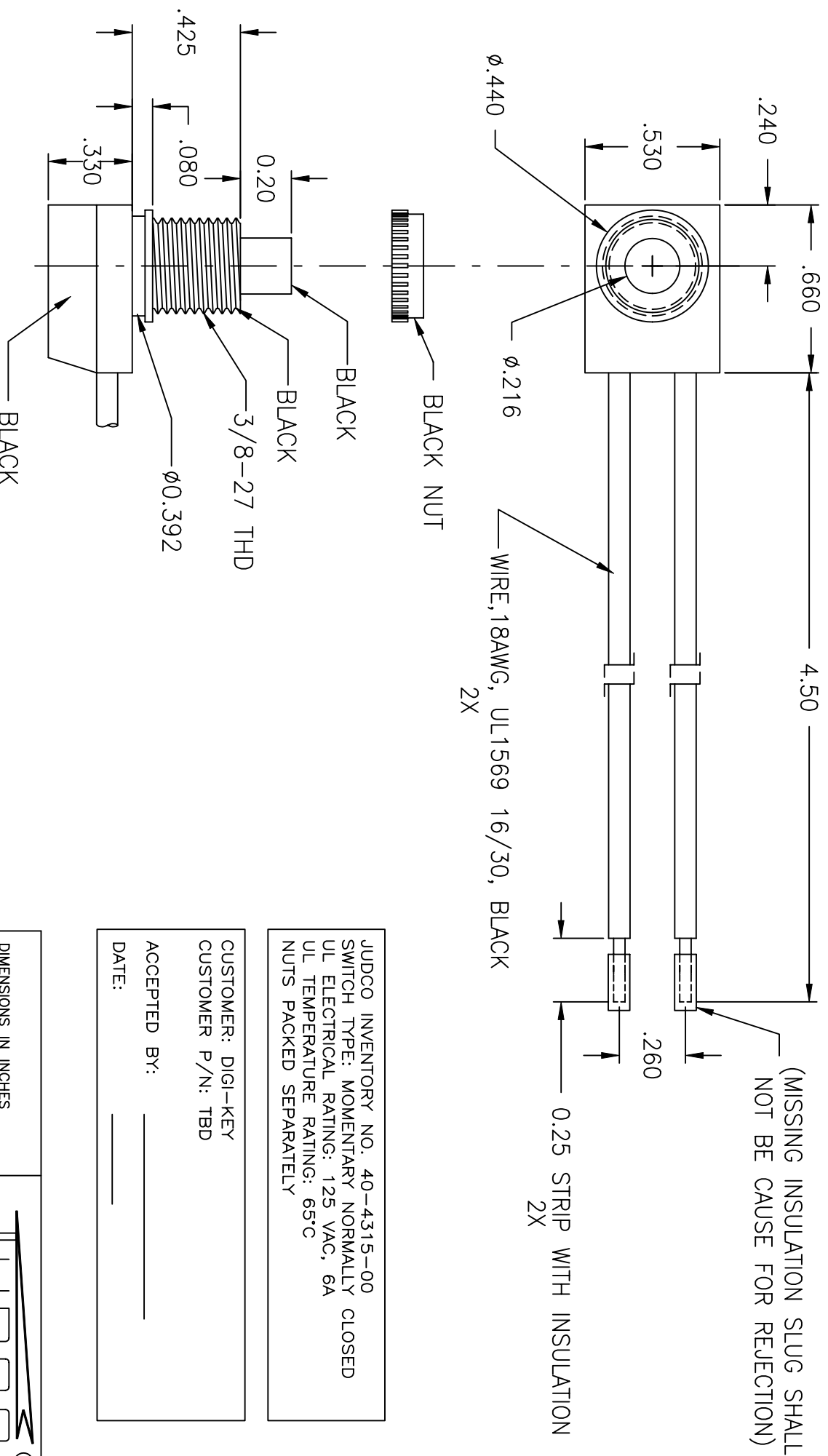


LTR	EN	DESCRIPTION	APPR	BY	DATE
A	-	INITIAL RELEASE	RB	DC	01-27-05



JUDCO INVENTORY NO. 40-4315-00  
 SWITCH TYPE: MOMENTARY NORMALLY CLOSED  
 UL ELECTRICAL RATING: 125 VAC, 6A  
 UL TEMPERATURE RATING: 65°C  
 NUTS PACKED SEPARATELY

CUSTOMER: DIGI-KEY  
 CUSTOMER P/N: TBD  
 ACCEPTED BY: \_\_\_\_\_  
 DATE: \_\_\_\_\_

DIMENSIONS IN INCHES DIMENSIONS ARE REFERENCE		
TITLE HARBOR CITY CALIFORNIA		
DRAWN: DC	01-27-05	OUTLINE <b>J-188A-3 ULAC</b>
APPR: KJ	01-27-05	
DWG. NO. 1415-743		SHEET 1 OF 1
1415U743A.DWG		

This document embodies a product, component, and/or design proprietary to JUDCO MANUFACTURING INC., and which is protected either as a trade secret, by U.S. Patent, or by copyright. It may not be used in any way without written express consent of JUDCO MANUFACTURING INC.

## X-ON Electronics

Largest Supplier of Electrical and Electronic Components

*Click to view similar products for [judco manufacturer](#):*

Other Similar products are found below :

[19-1082-00](#) [50-0063-00](#) [40-2531-01](#) [40-2502-01](#) [40-3658-01](#) [40-3573-02](#) [40-4911-00](#) [40-3355-01](#) [40-3536-00](#) [40-3438-02](#) [42-0711-00](#) [40-1880-02](#) [40-4743-00](#) [40-1673-01](#) [40-3429-00](#) [50-0089-00](#) [50-0041-00](#) [40-3657-00](#) [19-1103-00](#) [40-4818-00](#) [40-4744-00](#) [40-3352-02](#) [40-4819-00](#) [40-4675-00](#) [40-4816-00](#) [40-4314-00](#) [40-2386-00](#) [40-4520-00](#) [40-4394-00](#) [18-1017-00](#) [40-4677-00](#) [40-3145-01](#) [40-2390-00](#) [40-1672-02](#) [40-4526-00](#) [40-4313-00](#) [40-2385-01](#) [40-4463-01](#) [18-0112-02](#) [40-4325-00](#) [40-2388-01](#) [19-1088-00](#)