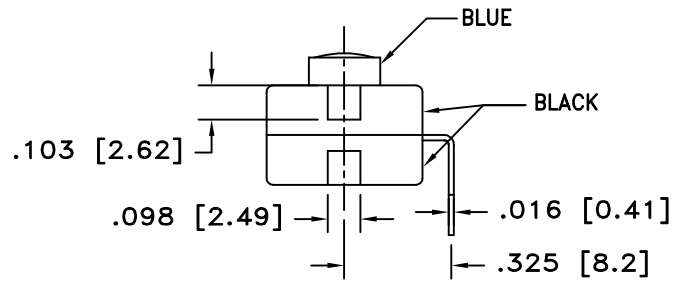
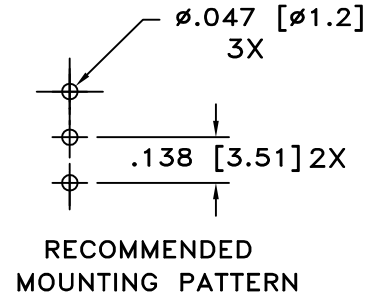
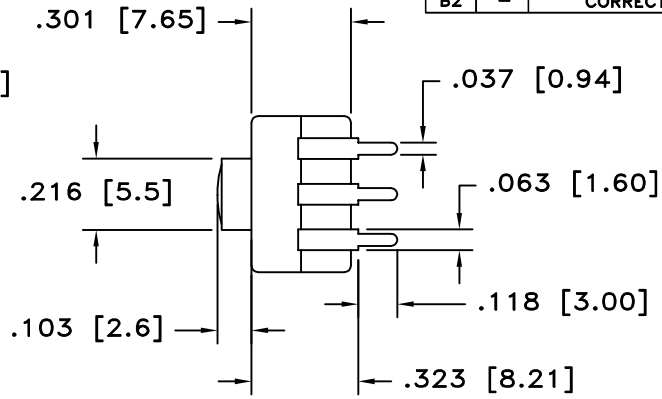
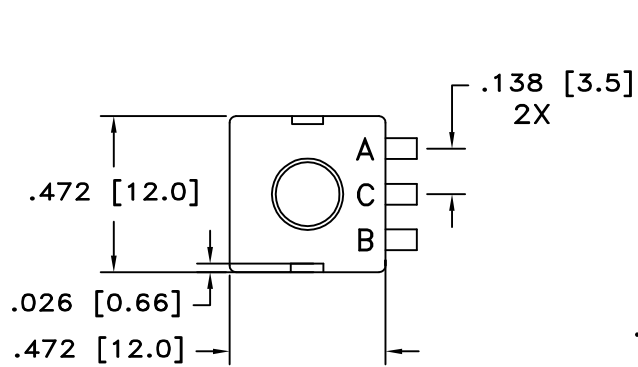
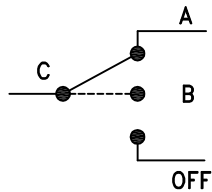


LTR	EN	DESCRIPTION	APPR	BY	DATE
A	-	INITIAL RELEASE	RB	NH	09-30-05
A1	-	ADDED CUSTOMER PART NUMBER.	RB	DC	12-20-05
A2	-	ADDED COLOR OF ACTUATOR (TEAL)	RB	DC	12-28-05
A3	-	CHANGE SCHEMATIC DIAGRAM TO MATCH SWITCH OPERATION.	RB	DC	02-13-06
B	-	UPDATED DRAWING TO MATCH SAMPLE PARTS. CALL OUT DIMENSIONS BOTH IN INCHES & MM. CHANGE PLUNGER COLOR FROM TEAL TO BLUE.	MT	DC	10-18-07
B1	-	ADDED ELETRICAL RATING 12VDC, 500mA	MT	DC	08-24-12
B2	-	CORRECTED SCHEMATIC DIAGRAM	MT	DC	09-07-12




JUDCO INVENTORY NO. 50-0088-00
 SWITCH TYPE: SPDT, J 977-8 (ON A- ON B-OFF)
 ELECTRICAL RATING: 12 VDC, 500mA

CUSTOMER:
 CUSTOMER PN:
 APPROVED BY: _____
 DATE: _____



SCHEMATIC

DIMENSIONS IN INCHES DIMENSIONS ARE REFERENCE		 HARBOR CITY CALIFORNIA TITLE MINI FLPK, J977-8 W/BENT TERMINALS
DRAWN: NH	09-30-05	
APPR: KJ	09-07-12	DWG. NO. 1415-862
ENG'G: IS	09-07-12	SHEET 1 OF 1
1415U862B2.DWG		

This document embodies a product, component, and/or design proprietary to JUDCO MANUFACTURING INC., and which is protected either as a trade secret, by U.S. Patent, or by copyright. It may not be used in any way without written express consent of JUDCO MANUFACTURING INC.

X-ON Electronics

Largest Supplier of Electrical and Electronic Components

Click to view similar products for [judco manufacturer](#):

Other Similar products are found below :

[19-1082-00](#) [40-3657-00](#) [50-0063-00](#) [40-2531-01](#) [40-2502-01](#) [40-3658-01](#) [40-3573-02](#) [40-3355-01](#) [40-4911-00](#) [40-3536-00](#) [40-3438-02](#) [42-0711-00](#) [40-4816-00](#) [40-4743-00](#) [40-1880-02](#) [40-1673-01](#) [40-3429-00](#) [50-0089-00](#) [50-0041-00](#) [19-1103-00](#) [40-4818-00](#) [40-3352-02](#) [40-4744-00](#) [40-4819-00](#) [40-4675-00](#) [40-4314-00](#) [40-2386-00](#) [40-4520-00](#) [40-4394-00](#) [18-1017-00](#) [40-4677-00](#) [40-3145-01](#) [40-2390-00](#) [40-1672-02](#) [40-4313-00](#) [40-2385-01](#) [40-4463-01](#) [18-0112-02](#) [40-4526-00](#) [40-4325-00](#) [40-2388-01](#) [19-1088-00](#)