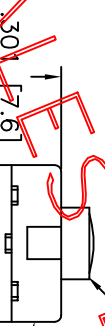
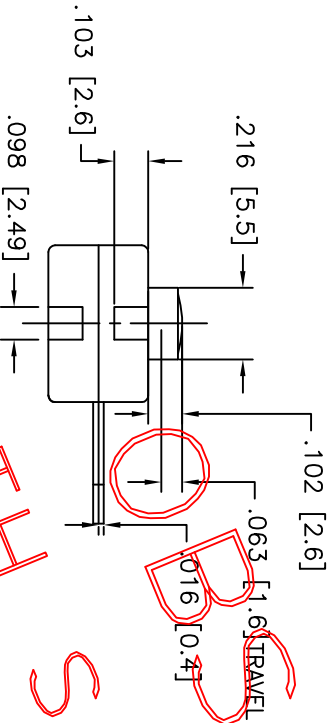
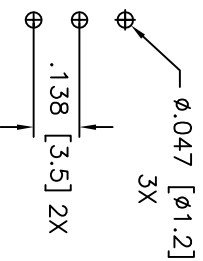
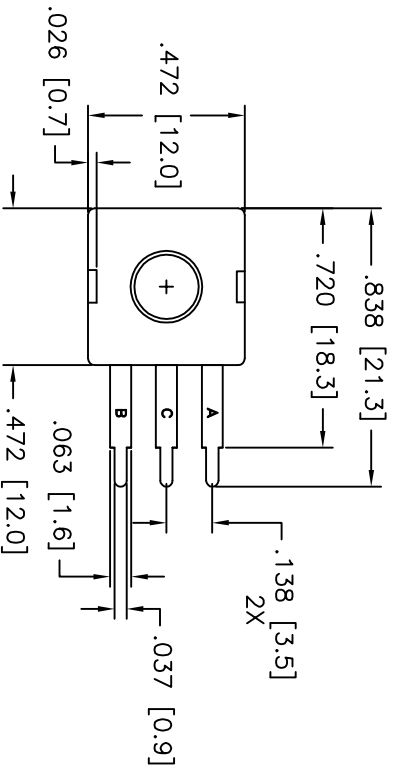
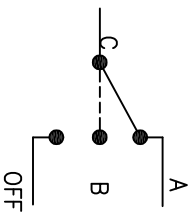


LTR	EN	DESCRIPTION	APPR	BY	DATE
A	-	INITIAL RELEASE	RB	NH	09-30-05
B	-	ADDED CUSTOMER PART# AND CHANGE DIMENSIONS FROM MM TO INCH.	RB	DC	12-20-05
B1	-	ADDED COLOR OF ACTUATOR (BLUE).	RB	DC	12-28-05
B2	-	CHANGE SCHEMATIC DIAGRAM TO MATCH SWITCH OPERATION.	RB	DC	02-13-06
C	-	UPDATED DRAWING TO MATCH SAMPLE PARTS. CALLED OUT DIMENSIONS BOTH IN INCHES & MM.	MT	DC	10-18-07
C1	-	ADDED HEIGHT OF PLUNGER AND TRAVEL.	MT	DC	08-06-08
C2	-	ADDED TOLERANCES	MT	DC	08-07-08



BLACK

BLUE



SCHEMATIC

RECOMMENDED MOUNTING PATTERN

CHECK WITH SALES BEFORE USING

JUDCO INVENTORY NO. 50-0089-00
 SWITCH TYPE: SPDT J-977-8 (ON A-ON B-OFF)
 ELECTRICAL RATING: 12 VDC, 500mA

CUSTOMER:
 CUSTOMER PN:
 APPROVED BY: _____
 DATE: _____

DO NOT SCALE DRAWING
 DIMENSIONS IN INCHES (MM)
 UNLESS OTHERWISE SPECIFIED
 TOLERANCES: ANGLE: X: X' ±5'
 X.XX ±.012 (0.30) X.X' ±3'
 X.XXX ±.008 (0.20) X.XX' ±1'
 X.XXX ±.004 (0.10) X.XX' ±1'

HARBOR CITY CALIFORNIA
 MINI FLAT PACK J977-8
 W/STRAIGHT TERMINALS

DRAWN: NH 09-30-05
 APPR: KJ 08-06-08
 DWG. NO. 1415-860

1415UB60C1.DWG

SHEET 1 OF 1

This document embodies a product, component, and/or design proprietary to JUDCO MANUFACTURING INC., and which is protected either as a trade secret, by U.S. Patent, or by copyright. It may not be used in any way without written express consent of JUDCO MANUFACTURING INC.

X-ON Electronics

Largest Supplier of Electrical and Electronic Components

Click to view similar products for [judco manufacturer](#):

Other Similar products are found below :

[19-1082-00](#) [40-3657-00](#) [50-0063-00](#) [40-2531-01](#) [40-2502-01](#) [40-3658-01](#) [40-3573-02](#) [40-3355-01](#) [40-4911-00](#) [40-3536-00](#) [40-3438-02](#) [42-0711-00](#) [40-4816-00](#) [40-4743-00](#) [40-1880-02](#) [40-1673-01](#) [40-3429-00](#) [50-0089-00](#) [50-0041-00](#) [19-1103-00](#) [40-4818-00](#) [40-3352-02](#) [40-4744-00](#) [40-4819-00](#) [40-4675-00](#) [40-4314-00](#) [40-2386-00](#) [40-4520-00](#) [40-4394-00](#) [18-1017-00](#) [40-4677-00](#) [40-3145-01](#) [40-2390-00](#) [40-1672-02](#) [40-4313-00](#) [40-2385-01](#) [40-4463-01](#) [18-0112-02](#) [40-4526-00](#) [40-4325-00](#) [40-2388-01](#) [19-1088-00](#)