

PITCH 1.25mm BAR CONNECTORS

性能:

额定电流: 1A

额定电压: 100V

耐电压: 500V

接触电阻: $\leq 20m\Omega$

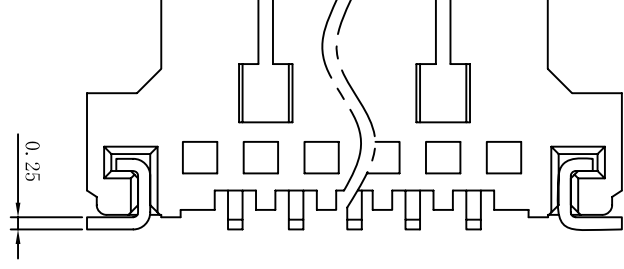
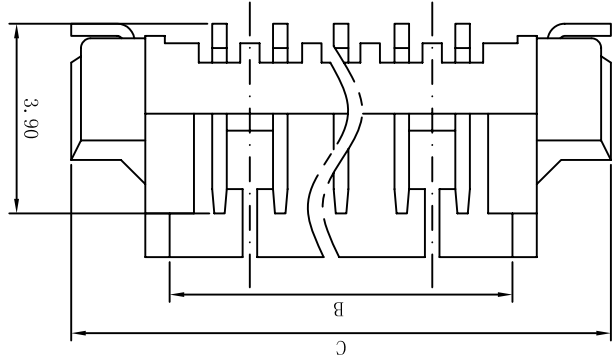
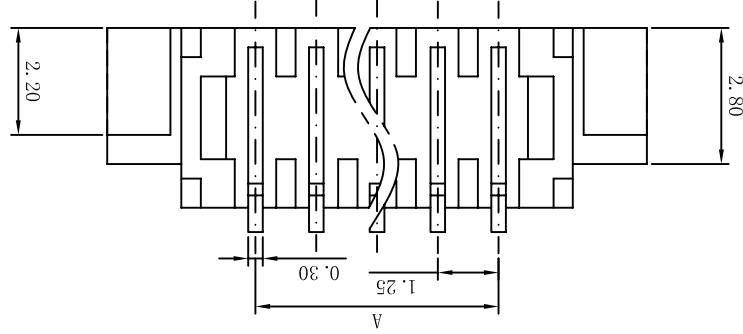
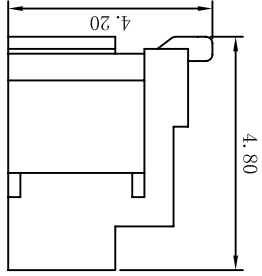
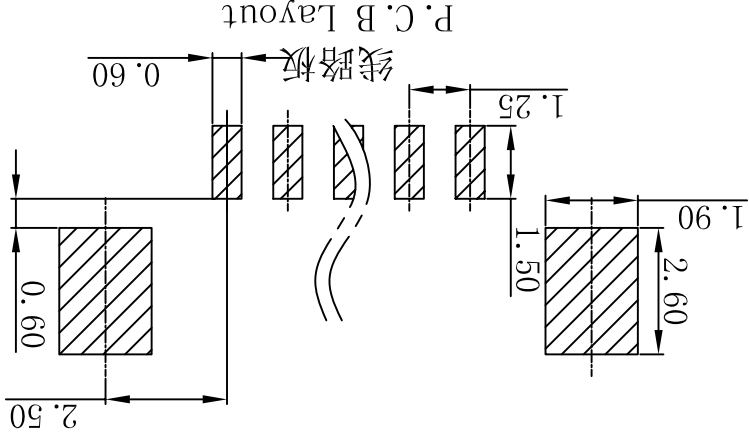
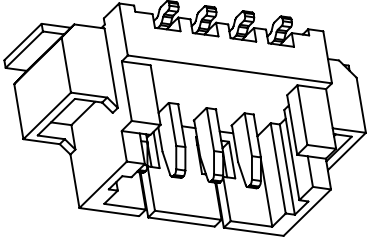
绝缘电阻: 500M Ω

工作温度: $-20^{\circ}C \sim +85^{\circ}C$

塑件 (材质): LCP, UL94V-0

插簧 (材质): 磷青铜, 镀锡/镀金

焊片 (材质): 磷青铜, 镀锡/镀金



孔位	A	B	C
20	23.75	25.60	29.85
19	22.50	24.35	28.60
18	21.25	23.10	27.35
17	20.00	21.85	26.10
16	18.75	20.60	24.85
15	17.50	19.35	23.60
14	16.25	18.10	22.35
13	15.00	16.85	21.10
12	13.75	15.60	19.85
11	12.50	14.35	18.60
10	11.25	13.10	17.35
9	10.00	11.85	16.10
8	8.75	10.60	14.85
7	7.50	9.35	13.60
6	6.25	8.10	12.35
5	5.00	6.85	11.10
4	3.75	5.60	9.85
3	2.50	4.35	8.60
2	1.25	3.10	7.35

NAME (INTENDED USE) 1.25mm (C型) 条形连接器立贴式

PART NO. (INTENDED USE) AFC12-S**CCA-00

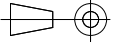
TITLE: 1.25mm (C型) 条形连接器立贴式

DWG NO.: 125N05-CUB00000000

DR: YLZ 2011.09.28	CHKD:	QTY:
APPD:	FINISH:	MAT'L:
SCALE: 1/1	SHEET: 1/1	REV.:

UNITS mm
 $X^{\circ} \pm 5^{\circ}$
 $X^{\circ} \pm 2^{\circ}$
 $.XX \pm 1^{\circ}$
 $.XXX \pm 0.10$
 $.XXX^{\circ} \pm 0.5^{\circ}$

THESE DRAWINGS AND SPECIFICATIONS ARE THE PROPERTY OF DE RUI ELECTRON FACTORY AND SHALL NOT BE REPRODUCED, COPIED OR USED IN ANY MANNER WITHOUT THE PRIOR WRITTEN CONSENT OF DE RUI ELECTRON FACTORY



X-ON Electronics

Largest Supplier of Electrical and Electronic Components

Click to view similar products for [Headers & Wire Housings](#) category:

Click to view products by [JUSHUO](#) manufacturer:

Other Similar products are found below :

[95000-104TRLF](#) [10135584-644402LF](#) [DF62W-EP2022PCA](#) [95000-106TRLF](#) [DF62W-2022SCA](#) [DF62W-EP2022PC](#) [2203348](#) [DF62W-2022SC](#) [1084018](#) [1029039](#) [1084017](#) [802-10-012-10-002000](#) [1112640](#) [1112639](#) [891-007-9SS-BST1T](#) [000-34000](#) [0008550134](#) [0009482033](#) [0009507031](#) [57102-F02-18ULF](#) [57102-S06-03LF](#) [57202-S52-04LF](#) [PCN6-15S-2.5E](#) [0039019024](#) [58102-G61-06LF](#) [582553-1](#) [0009485154](#) [0009508121](#) [0022285053](#) [0050291907](#) [018731A](#) [LY20-4P-DT1-P1E-BR](#) [02.125.8002.8](#) [60101931](#) [60598-1 \(Cut Strip\)](#) [M1625-3R/100](#) [61062-3](#) [61082-181009](#) [CSU011177004](#) [636-1427](#) [638009-1](#) [641938-9](#) [641991-4](#) [644168-1](#) [644827-2](#) [647662-1](#) [65039-019ELF](#) [65692-001LF](#) [65781-018](#) [65781-047](#)