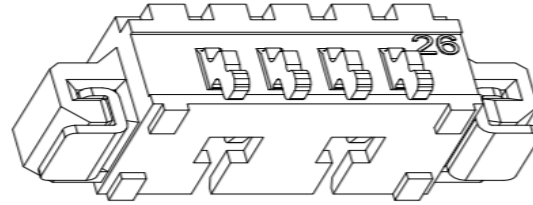
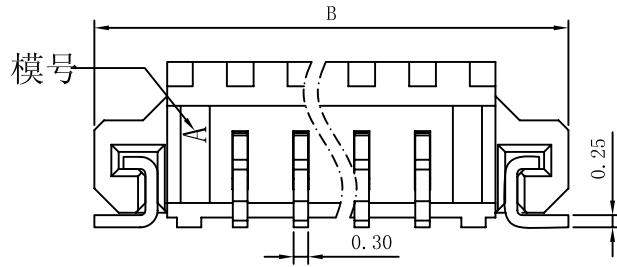
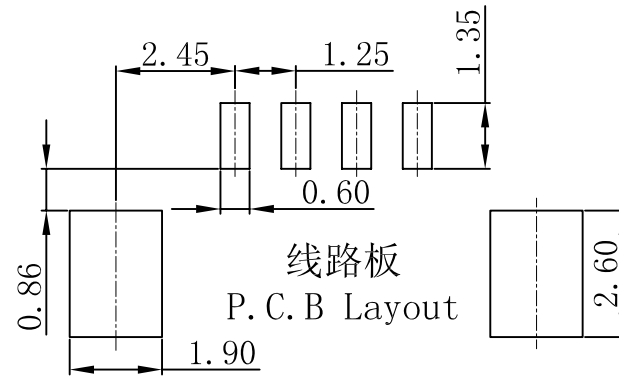
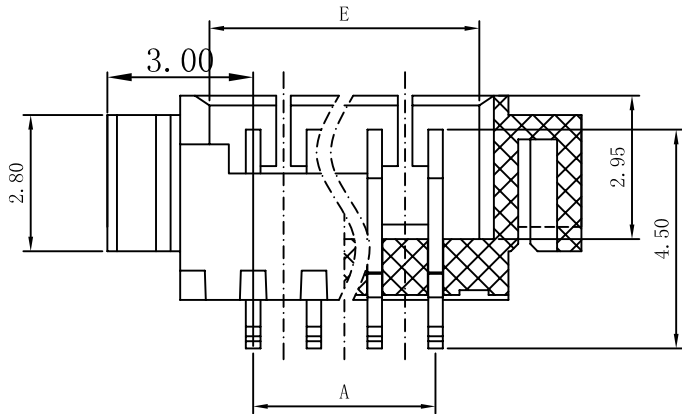
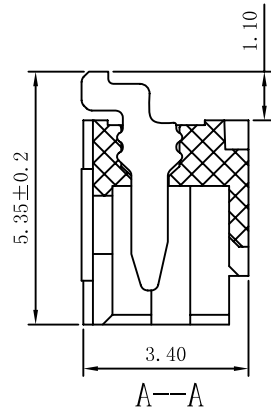
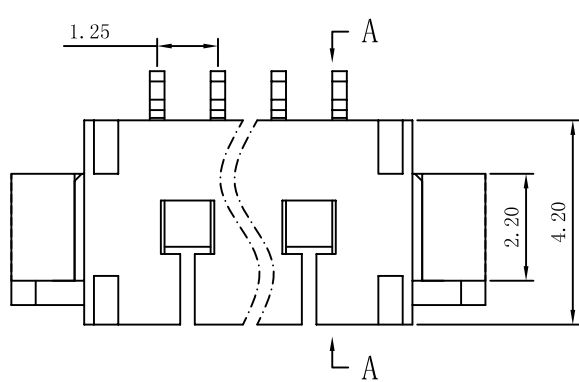


# PITCH 1.25mm BAR CONNECTORS



性能:

- 额定电流: 1A
- 额定电压: 100V
- 耐电压: 500V
- 接触电阻:  $\leq 20m\Omega$
- 绝缘电阻:  $500M\Omega$
- 工作温度:  $-20^{\circ}C \sim +85^{\circ}C$
- 塑件 (材质): LCP, UL94V-0
- 插簧 (材质): 磷青铜, 镀锡/镀金
- 焊片 (材质): 磷青铜, 镀锡/镀金



线路板  
P. C. B Layout

孔位	A	B	E
2	1.25	7.25	3.05
3	2.50	8.50	4.30
4	3.75	9.75	5.55
5	5.00	11.00	6.80
6	6.25	12.25	8.05
7	7.50	13.50	9.30
8	8.75	14.75	10.55
9	10.00	16.00	11.80
10	11.25	17.25	13.05
11	12.50	18.50	14.30
12	13.75	19.75	15.55
13	15.00	21.00	16.80
14	16.25	22.25	18.05
15	17.50	23.50	19.30
16	18.75	24.75	20.55

Product No: AFC12-S  
 CKTS \*\*  
 CONTACTS TYPE D \*  
 C:Upper  
 D:Lower  
 PLATING A - 00  
 1:Gold flash 1u"  
 2:Gold flash 2u"  
 3:Gold flash 3u"  
 B:Bright-Tin 90-120u"  
 C:Matt-Tin 90-120u"  
 REMARKS HF:Halogen free  
 PACKING A:Tape&Reel C:Tube

X. $\pm 0.3$	X° $\pm 5^{\circ}$	UNITS mm	NAME (INTENDED USE) 1.25mm (D型)条形连接器卧贴式	深圳市钜硕电子有限公司
.X $\pm 0.25$	.X° $\pm 2^{\circ}$	MAT'L	PART NO. (INTENDED USE) AFC12-S**DCA-00	
.XX $\pm 0.20$	.XX° $\pm 1^{\circ}$	FINISH	APPD:	TITLE: 1.25mm (D型)条形连接器卧贴式
.XXX $\pm 0.10$	.XXX° $\pm 0.5^{\circ}$		Q'TY	CHKD:
THESE DRAWINGS AND SPECIFICATIONS ARE THE PROPERTY OF DE RUI ELECTRON FACTORY AND SHALL NOT BE REPRODUCED, COPIED OR USED IN ANY MANNER WITHOUT THE PRIOR WRITTEN CONSENT OF DE RUI ELECTRON FACTORY			DR: YLZ 2011.09.28	SCALE SHEET REV. 1/1 1/1 A

## X-ON Electronics

Largest Supplier of Electrical and Electronic Components

*Click to view similar products for [Headers & Wire Housings](#) category:*

*Click to view products by [JUSHUO](#) manufacturer:*

Other Similar products are found below :

[57102-F02-18ULF](#) [58102-G61-06LF](#) [0009485154](#) [009176003701906](#) [0050291907](#) [00-9021-0611-00-339](#) [02.125.8002.8](#) [609-3404](#) [61062-3](#)  
[622-0430](#) [622-3653LF](#) [63453-116](#) [636-1030](#) [636-1427](#) [636-3427](#) [636-4007](#) [641938-9](#) [644827-2](#) [65495-038](#) [65692-001LF](#) [65781-018](#)  
[65781-047](#) [65817-010LF](#) [65817-015LF](#) [66207-023LF](#) [67016-026LF](#) [67095-007LF](#) [68631-112](#) [68645-018](#) [68648-049](#) [699319-000](#)  
[70.362.1628.0](#) [70-4210](#) [70-4226B](#) [70-4853B](#) [707-5020](#) [707-5028](#) [71.350.2428.0](#) [71961-016LF](#) [733-134](#) [754199-000](#) [760-3052](#) [787-8014-00](#)  
[FCN-367T-T012/H](#) [80.063.4001.1](#) [800-90-001-10-001000](#) [800-90-010-10-002000](#) [801-43-002-10-013000](#) [801-43-006-10-002000](#)  
[803-41-018-10-001000](#)