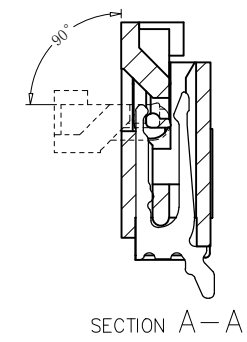
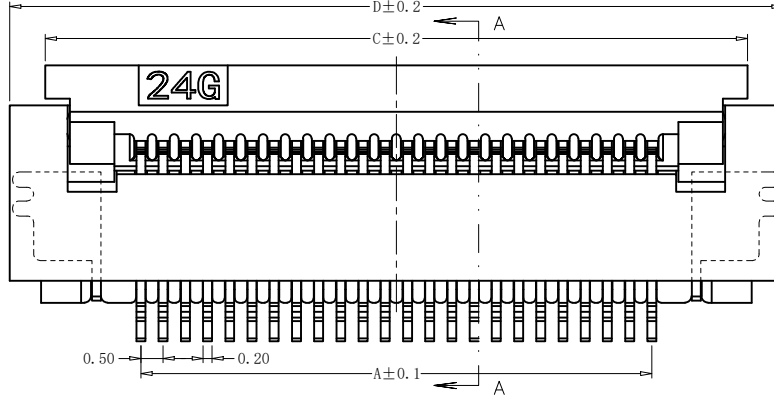
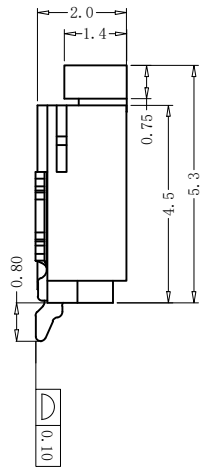
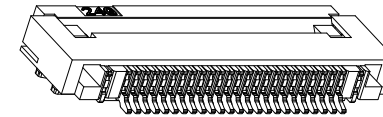
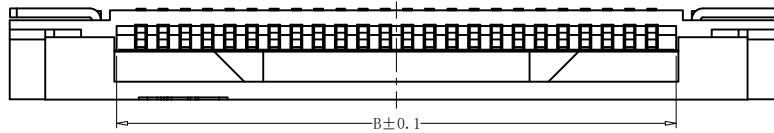
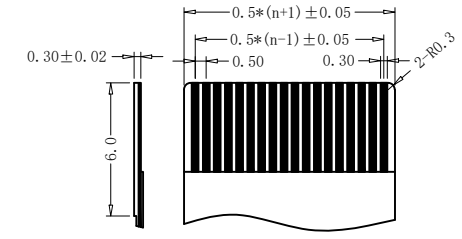
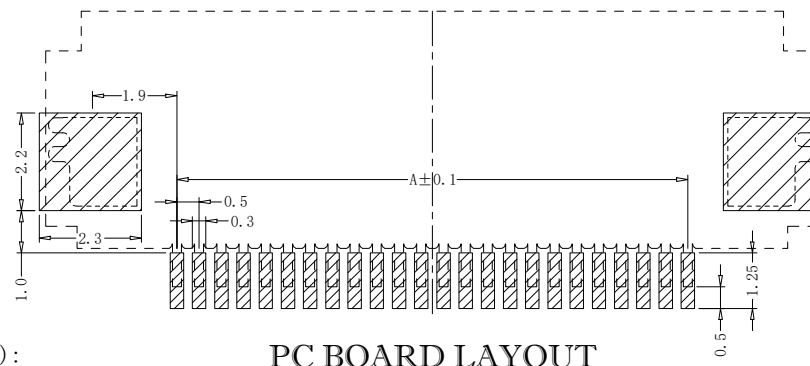
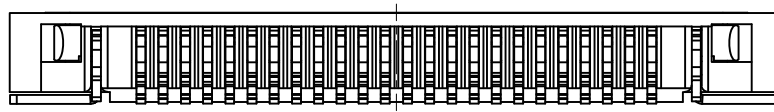


| REV. | ECN NO. | LOCAS. | DESCRIPTION | DATE | DESIGN |
|------|---------|--------|-------------|----------|--------|
| A | | | NEW DRAWING | 22.12.01 | Jenply |



Product No: AFD01-S ** F * A - 00
 CKTS ** F * A - 00
 CONTACTS TYPE F: Lower H: Double Lower
 PLATING 1: Gold flash 1u" 2: Gold flash 2u" 3: Gold flash 3u"
 B: Bright-Tin C: Matt-Tin
 REMARKS HF: Halogen free
 PACKING A: Tape&Reel C: Tube



PROPER CABLE (SCALE 2:1)

| 孔位 | A | B | C | D |
|----|-------|-------|-------|-------|
| 4 | 1.50 | 2.60 | 5.80 | 7.40 |
| 5 | 2.00 | 3.10 | 6.30 | 7.90 |
| 6 | 2.50 | 3.60 | 6.80 | 8.40 |
| 7 | 3.00 | 4.10 | 7.30 | 8.90 |
| 8 | 3.50 | 4.60 | 7.80 | 9.40 |
| 9 | 4.00 | 5.10 | 8.30 | 9.90 |
| 10 | 4.50 | 5.60 | 8.80 | 10.40 |
| 11 | 5.00 | 6.10 | 9.30 | 10.90 |
| 12 | 5.50 | 6.60 | 9.80 | 11.40 |
| 13 | 6.00 | 7.10 | 10.30 | 11.90 |
| 14 | 6.50 | 7.60 | 10.80 | 12.40 |
| 15 | 7.00 | 8.10 | 11.30 | 12.90 |
| 16 | 7.50 | 8.60 | 11.80 | 13.40 |
| 17 | 8.00 | 9.10 | 12.30 | 13.90 |
| 18 | 8.50 | 9.60 | 12.80 | 14.40 |
| 19 | 9.00 | 10.10 | 13.30 | 14.90 |
| 20 | 9.50 | 10.60 | 13.80 | 15.40 |
| 21 | 10.00 | 11.10 | 14.30 | 15.90 |
| 22 | 10.50 | 11.60 | 14.80 | 16.40 |
| 23 | 11.00 | 12.10 | 15.30 | 16.90 |
| 24 | 11.50 | 12.60 | 15.80 | 17.40 |
| 25 | 12.00 | 13.10 | 16.30 | 17.90 |
| 26 | 12.50 | 13.60 | 16.80 | 18.40 |
| 27 | 13.00 | 14.10 | 17.30 | 18.90 |
| 28 | 13.50 | 14.60 | 17.80 | 19.40 |
| 29 | 14.00 | 15.10 | 18.30 | 19.90 |
| 30 | 14.50 | 15.60 | 18.80 | 20.40 |
| 31 | 15.00 | 16.10 | 19.30 | 20.90 |
| 32 | 15.50 | 16.60 | 19.80 | 21.40 |
| 33 | 16.00 | 17.10 | 20.30 | 21.90 |
| 34 | 16.50 | 17.60 | 20.80 | 22.40 |
| 35 | 17.00 | 18.10 | 21.30 | 22.90 |
| 36 | 17.50 | 18.60 | 21.80 | 23.40 |
| 37 | 18.00 | 19.10 | 22.30 | 23.90 |
| 38 | 18.50 | 19.60 | 22.80 | 24.40 |
| 39 | 19.00 | 20.10 | 23.30 | 24.90 |
| 40 | 19.50 | 20.60 | 23.80 | 25.40 |
| 41 | 20.00 | 21.10 | 24.30 | 25.90 |
| 42 | 20.50 | 21.60 | 24.80 | 26.40 |
| 43 | 21.00 | 22.10 | 25.30 | 26.90 |
| 44 | 21.50 | 22.60 | 25.80 | 27.40 |
| 45 | 22.00 | 23.10 | 26.30 | 27.90 |
| 46 | 22.50 | 23.60 | 26.80 | 28.40 |
| 47 | 23.00 | 24.10 | 27.30 | 28.90 |
| 48 | 23.50 | 24.60 | 27.80 | 29.40 |
| 49 | 24.00 | 25.10 | 28.30 | 29.90 |
| 50 | 24.50 | 25.60 | 28.80 | 30.40 |
| 51 | 25.00 | 26.10 | 29.30 | 30.90 |
| 52 | 25.50 | 26.60 | 29.80 | 31.40 |
| 53 | 26.00 | 27.10 | 30.30 | 31.90 |
| 54 | 26.50 | 27.60 | 30.80 | 32.40 |
| 55 | 27.00 | 28.10 | 31.30 | 32.90 |
| 56 | 27.50 | 28.60 | 31.80 | 33.40 |
| 57 | 28.00 | 29.10 | 32.30 | 33.90 |
| 58 | 28.50 | 29.60 | 32.80 | 34.40 |
| 59 | 29.00 | 30.10 | 33.30 | 34.90 |
| 60 | 29.50 | 30.60 | 33.80 | 35.40 |

技术要求 (Technical Index):

PC BOARD LAYOUT

- 材质与表面处理 (Material And Finish):
 基座 (Housing) and 盖子 (Cover): LCP UL94V-0 Nature Or Black;
 端子 (Terminal): Phosphor Copper Au/Sn Plated;
 焊片 (Solder): Copper Alloy Au/Sn Plated;
- 工作温度 (Temperature range): -25° C ~ +85° C.
- 额定电压 (Rated voltage): 50V, AC/DC.
- 额定电流: 0.4A, AC/DC.
- 接触电阻 (Contact resistance): ≤ 20mΩ.
- 绝缘电阻 (Insulation resistance): ≥ 500MΩ.
- 耐电压 (Withstanding Voltage): 200V AC/minute.

| | | | | | |
|-----------|------------|---|-------|---------------------------|----------|
| DESIGN: | Jenply | 深圳市钜硕电子有限公司 SHENZHEN JUSHUO ELECTRONIC CO.,LTD | | | |
| CHECK: | Ke Tian | | | | |
| APPROVED: | Youquan Xu | TITLE: FPC 0.5mm翻盖式H2.0下接D型 (大焊片) | | | |
| DIM | TOL | DIM | TOL | PART NO. AFD01-S**-F**-00 | |
| X. | ±0.25 | X°. | ±3.0° | REV. A | |
| X.X | ±0.20 | X.X° | | SCALE: N/A | UNIT: mm |
| X.XX | ±0.15 | X.XX° | | SHEET: 1/1 | |
| X.XXX | | X.XXX° | | | |

X-ON Electronics

Largest Supplier of Electrical and Electronic Components

Click to view similar products for [FFC & FPC Connectors](#) category:

Click to view products by [JUSHUO](#) manufacturer:

Other Similar products are found below :

[00-6200-227-022-800](#) [006205250500825+](#) [006205280500825+](#) [FPH-1602G](#) [086222026001800](#) [52610-0675](#) [62674-201121DLF](#) [52746-1671-TR250](#) [10051922-1610EHLF](#) [10051922-2810EHLF](#) [686322124422](#) [XF3M-2915-1B-R100](#) [AYF353125A](#) [AYF530665TA](#) [AYF534065TA](#) [20FLH-RSM1-TB](#) [207356-1](#) [SFW12R-5STE9LF](#) [SFW18R-1STAE9LF](#) [SFW4R-5STE9LF](#) [52807-0430](#) [046283021002868+](#) [FFC05011-10SBB114W5M](#) [502250-8027](#) [67000-008LF](#) [200528-0260](#) [FH28K-10S-0.5SH](#) [FH52K-6S-0.5SH](#) [0.5K-DX-30PWB](#) [DS1020-08-10VBT12](#) [THD0515-34CL-GF](#) [X05A10L28G](#) [ECC2841061EU](#) [1.0K-DHQX-16PWB](#) [1.0K-DHQX-30PWB](#) [1775333-6](#) [10054365-202110ELF](#) [10054365-242110ELF](#) [10054365-282110ELF](#) [10064555-392220HLF](#) [59453-041110EBHLF](#) [59453-091110EDHLF](#) [62674-241141ALF](#) [62684-432100ALF](#) [62684-451100AHLF](#) [62684-5721N0ALF](#) [HFW11R-1STE1MTLF](#) [HFW12R-1STE9LF](#) [HFW14R-1STE9MTLF](#) [HFW18S-2STE9LF](#)