



FEATURES

Maximum output current

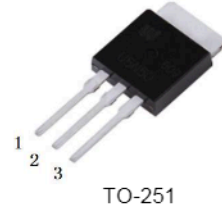
I_{OM} : 0.5 A

Output voltage

V_O : 5V

Continuous total dissipation

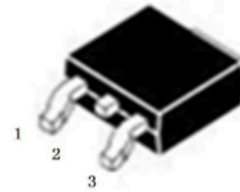
P_D : 1.25 W



TO-251

MECHANICAL DATA

- Case: Molded plastic
- Polarity: As marked
- Mounting Position: Any
- Molded Plastic: UL Flammability Classification Rating 94V-0
- Lead free in compliance with EU RoHS 2011/65/EU directive
- Solder bath temperature 275°C maximum, 10s per JESD 22-B106



TO-252

- 1.IN
- 2.GND
- 3.OUT

Absolute Maximum Ratings (Operating temperature range applies unless otherwise pecified)

| Symbol | Characteristics | Value | Unit |
|-----------|--------------------------------------|-------------|------|
| V_i | Input Voltage | 25 | V |
| T_{OPR} | Operating Junction Temperature Range | 0 to +125 | °C |
| T_{STG} | Storage Temperature Range | -65 to +150 | °C |

Note1: Thermal resistance from Junction to case per leg mounted on heatsink.

Electrical Characteristics At Specified Virtual Junction Temperature

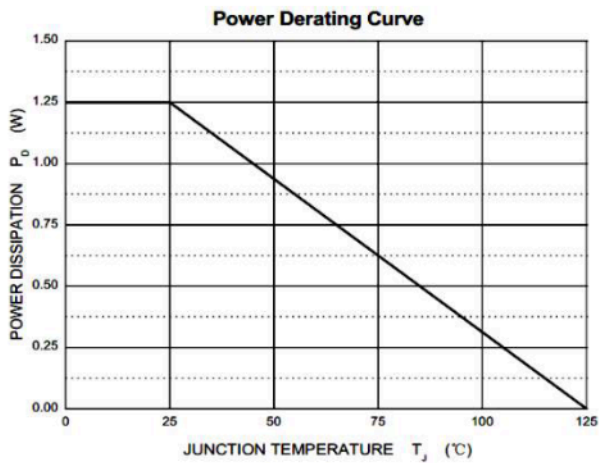
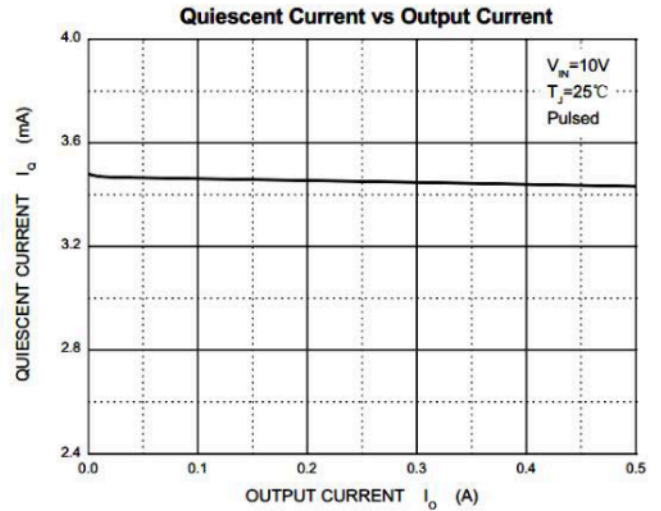
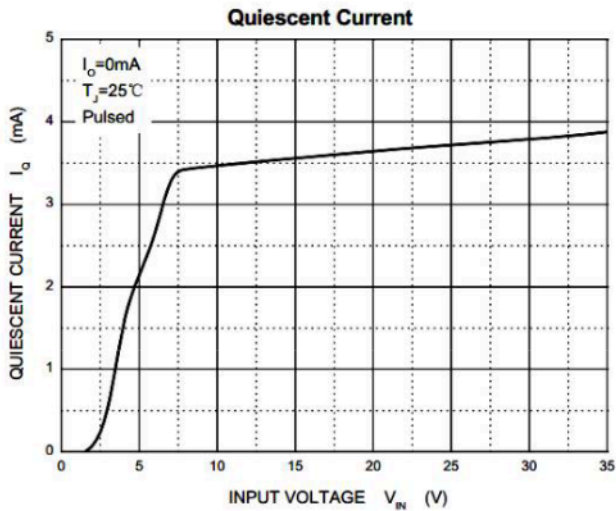
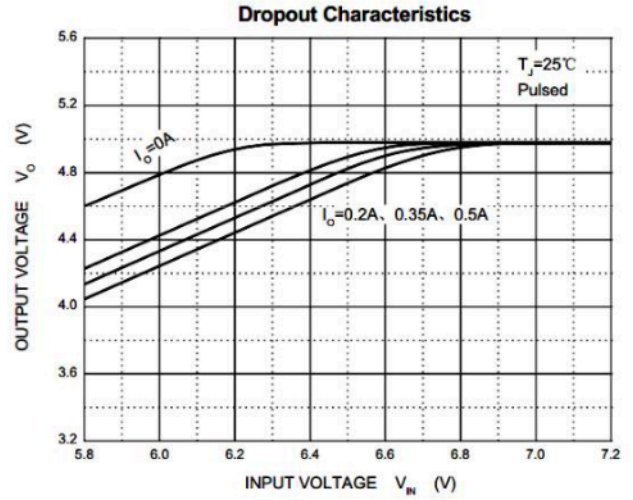
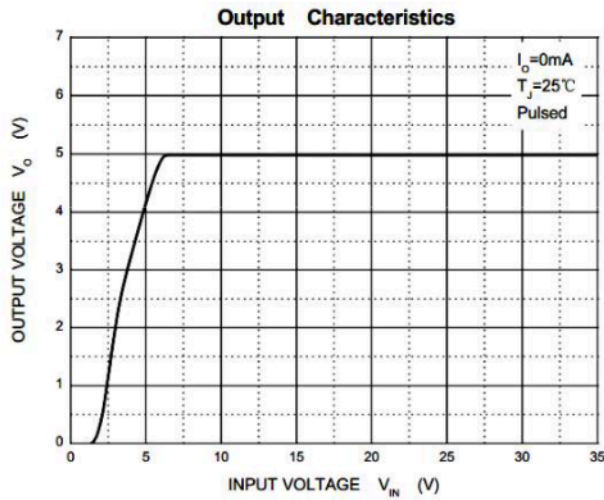
($V_i=10V$, $I_O=350mA$, $C_i =0.33 \mu F$, $C_o =0.1 \mu F$, unless otherwise specified)

| Symbol | Parameter | Test Conditions | Min | Typ | Max | Unit |
|--------------|--------------------------|---|---------|------|-----|---------|
| V_o | Output Voltage | 25°C | 4.8 | 5 | 5.2 | V |
| | | $7V \leq V_i \leq 20V, I_o=5mA-350mA$ $P_o \leq 15W$ | 0-125°C | 4.75 | 5 | 5.25 |
| ΔV_o | Load Regulation | $I_o=5mA-0.5A$ | 25°C | 15 | 100 | mV |
| | | $I_o=5mA-200mA$ | 25°C | 5 | 50 | mV |
| ΔV_o | Line Regulation | $7V \leq V_i \leq 25V, I_o=200mA$ | 25°C | 3 | 100 | mV |
| | | $8V \leq V_i \leq 25V, I_o=200mA$ | 25°C | 1 | 50 | mV |
| I_q | Quiescent Current | 25°C | | 4.2 | 6 | mA |
| ΔI_q | Quiescent Current Change | $8V \leq V_i \leq 25V, I_o=200mA$ | 0-125°C | | 0.8 | mA |
| ΔI_q | | $5mA \leq I_o \leq 350mA$ | 0-125°C | | 0.5 | mA |
| V_N | Output Noise Voltage | $10Hz \leq f \leq 100KHz$ | 25°C | 40 | 200 | μV |
| RR | Ripple Rejection | $8V \leq V_i \leq 18V, f=120Hz, I_o=300mA$ | 0-125°C | 62 | 80 | dB |
| Vd | Dropout Voltage | $I_o=350mA$ | 25°C | 2 | 2.5 | V |
| Isc | Short Circuit Current | $V_i=10V$ | 25°C | 300 | | mA |
| Ipk | Peak Current | | 25°C | 0.5 | | A |



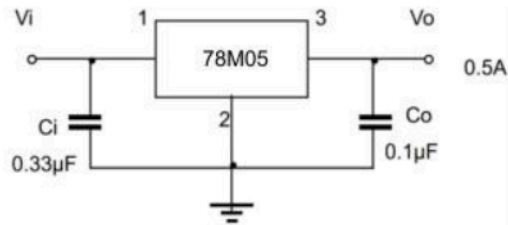


Typical Characteristics



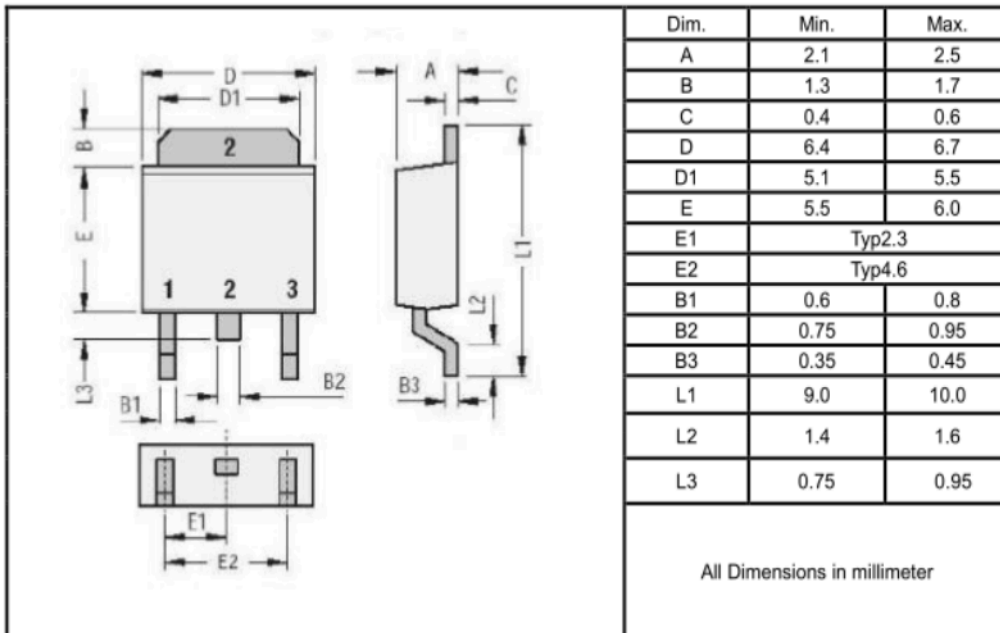


Typical Application

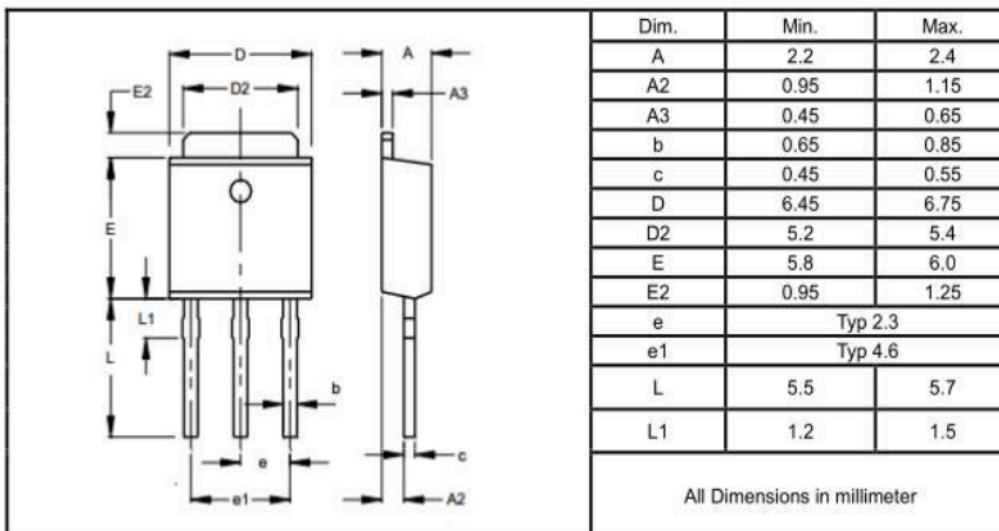


Package Outline Dimensions millimeters

TO-252



TO-251



X-ON Electronics

Largest Supplier of Electrical and Electronic Components

Click to view similar products for [Linear Voltage Regulators](#) category:

Click to view products by [Juxing Electronic Technology](#) manufacturer:

Other Similar products are found below :

[LV5684PVD-XH](#) [MCDTSA6-2R](#) [L7815ACV-DG](#) [714954EB](#) [ZMR500QFTA](#) [BA033LBSG2-TR](#) [LV5680P-E](#) [L79M05T-E](#) [L78LR05D-MA-E](#) [NCV317MBTG](#) [NTE7227](#) [MP2018GZD-33-P](#) [MP2018GZD-5-P](#) [LV5680NPVC-XH](#) [LT1054CN8](#) [UA78L09CLP](#) [UA78L09CLPR](#) [CAT6221-PPTD-GT3](#) [MC78M09CDTRK](#) [NCV51190MNTAG](#) [78M05](#) [HT7150-1](#) [UM1540DB-18](#) [XC6234H281VR-G](#) [WL2834CA-6/TR](#) [TPL730F33-5TR](#) [TLS850F1TA](#) [V50](#) [TPS549B22RVFR](#) [UM1540DB-33](#) [WL9200P3-50B](#) [WL9100P3-33B](#) [WL9005D4-33](#) [XC6219B152MR](#) [WL2855K33-3/TR](#) [PJ54BM33SE](#) [PJ9500M25SA](#) [MD7218E33PC1](#) [H7533-2PR](#) [SK7812AU](#) [SD1A30](#) [78L33](#) [TP78L33T3](#) [L78L33ACUTR](#) [SK6513ST3A-50](#) [SK6054D4-09](#) [SK6054D4-18](#) [SK6054D4-11](#) [SK6054D4-10](#) [LM79L12F](#) [HLP2985AIM5X-5.0](#)