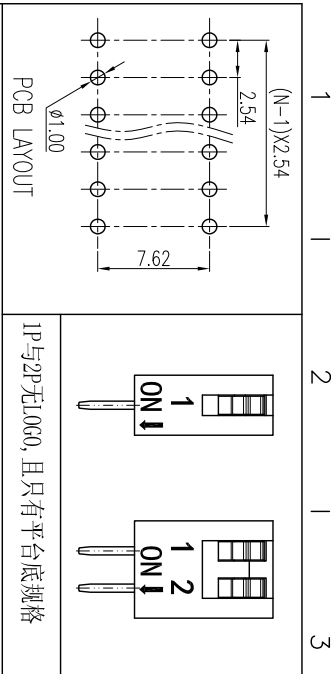
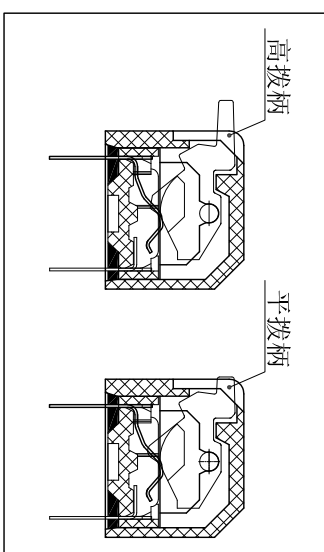
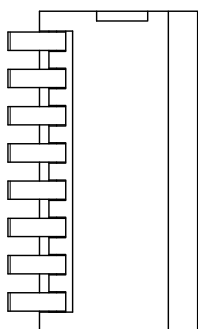


REV	ECN	CONTENT	CHECK	DATE
V0.0		初版发行	LJ	2019.01.13
V1.0		整理图纸	WL	2020.06.03



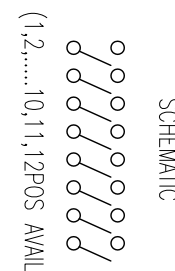
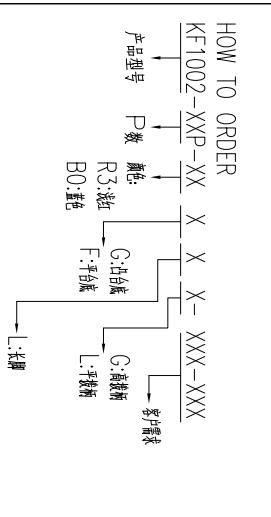
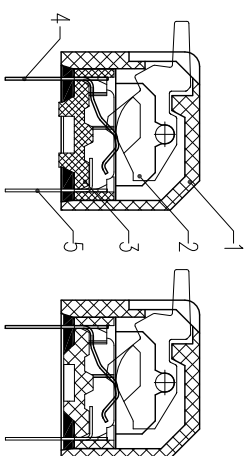
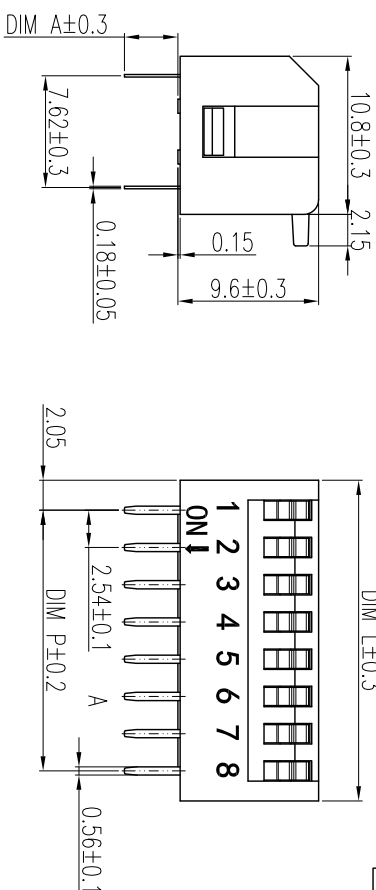
1P与2P无10G0, 且只有平台底座规格

DIM A	长针
凸台底座	3.65
平台底座	3.80



- 技术要求:
- 额定电流: 25mA, 24VDC (开与关切换时) 100mA, 50VDC (开与关不切换时)
 - 接触阻抗: $\leq 50m\Omega$ (初始), $\leq 100m\Omega$ (寿命测试后)
 - 绝缘电阻: $\geq 100M\Omega/500VDC$
 - 耐电压: 500VAC/1minute
 - 拨动力: 1000g max
 - 机械寿命: ≥ 2000 cycles
 - 使用温度: $-40^{\circ}C \sim +85^{\circ}C$
 - 存储温度: $-40^{\circ}C \sim +85^{\circ}C$
 - 符合RoHS要求

焊接说明:
 手工焊接: 30W电烙铁, $320 \pm 5^{\circ}C$, 3S max
 波峰焊接: $250 \pm 10^{\circ}C$, 5S max
 焊接前保持开关在“OFF”状态



General tolerance in mm			radii and chamfers			shorter angle side		
over 0	to 3	±0.15	over 0.5	to 3	±0.2	over 10	to 50	±30°
over 3	to 6	±0.2	over 0.5	to 3	±0.2	over 50	to 100	±20°
over 6	to 30	±0.25	over 3	to 6	±0.5	over 100	to 150	±0.2
over 30	to 120	±0.3	over 6	to 10	±1.0	over 150	to 500	±0.3
over 120	to 400	±0.5	over 10	to 30	±1.0	over 500	to 1000	±0.5
over 400	to 1000	±0.8	over 30	to 60	±1.0	over 1000	to 1500	±0.5
over 1000	to 10000	±1.0	over 60	to 120	±1.0	over 1500	to 2000	±0.5

POLES	DIM P	DIM L
1	/	4.11
2	2.54	6.65
3	5.08	9.19
4	7.62	11.73
5	10.16	14.27
6	12.70	16.81
7	15.24	19.35
8	17.78	21.89
9	20.32	24.43
10	22.86	26.97
11	25.40	29.51
12	27.94	32.05

序号	零件名称	零件编码	数量	材质	备注
1	外壳	/	1	工程塑料	UL94V-0
2	底座	/	1	工程塑料	UL94V-0
3	PIN1	/	1	铜合金	镀金
4	PIN2	/	1	铜合金	镀金

APP.	LJ	DATE	2020.6.3	NAME	KF1002-XXP-XXXXLX-0N-XXX
CHK.	LJ	DATE	2020.6.3	DWGNO.	W20004301
DWG.	WL	DATE	2020.6.3	SHEET	1/1
UNITS	MM	SCALE	1:1	PROJECTION-METHOD	☉

DFE 慈溪市凯峰电子有限公司
 CIXI KAIFENG ELECTRONICS CO., LTD

X-ON Electronics

Largest Supplier of Electrical and Electronic Components

Click to view similar products for [DIP Switches/SIP Switches](#) category:

Click to view products by [KAIFENG](#) manufacturer:

Other Similar products are found below :

[79B10T](#) [8136-475G4T](#) [G7G-1A2-CB-DC12](#) [H7CZL8AC100240](#) [DRR60016](#) [DRS4016](#) [1825444-1](#) [200183](#) [206002](#) [219-6LPSTRF](#)
[25.350.0653.0](#) [SBS 5004 TG](#) [SDA10H1BDA](#) [97R06ST](#) [A2C-2A5](#) [1825444-7](#) [ADE08SA04](#) [ADE12S04](#) [192960010](#) [206005RAS](#) [206007](#) [2-](#)
[1825058-8](#) [25.330.0653.1](#) [25.352.0353.0](#) [CXDRIVEV2X](#) [IKN0600000](#) [IKN0800000](#) [LA2-002-DC24](#) [DSR02T](#) [DSS 208 N](#)
[E2FMX2D1M1TGJ03M](#) [NDI10H](#) [219-9MSTP](#) [EPM02FV](#) [206010RAST](#) [NDS08V](#) [76SB05](#) [TD06H0SK1](#) [Z7.255.9027.0](#) [1-1825058-3](#)
[1825428-4](#) [219-10LPSTF](#) [E3ZG6111D03M](#) [G4D212PUSTV2DC5](#) [EPG301BT06](#) [219-7LPSTRF](#) [1-1825058-6](#) [E3TSL23M5J03M](#) [Y5795](#)
[7R0060](#)