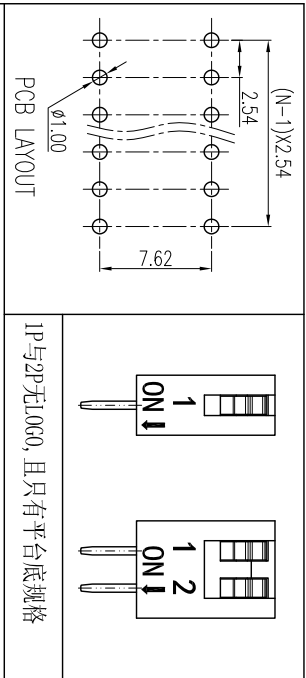
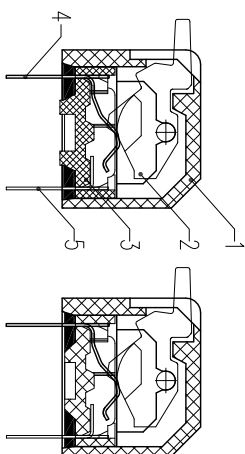
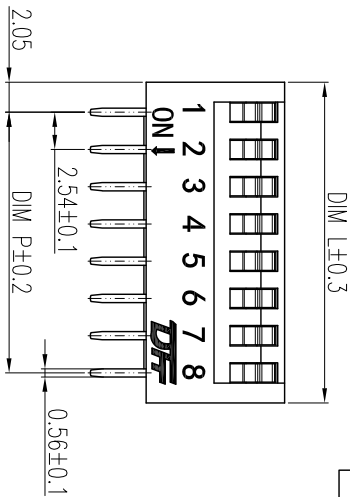
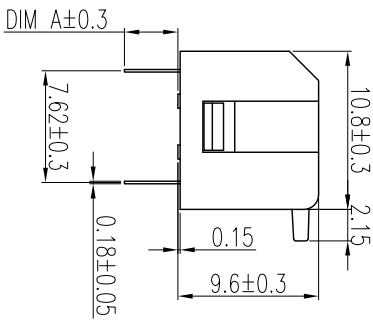
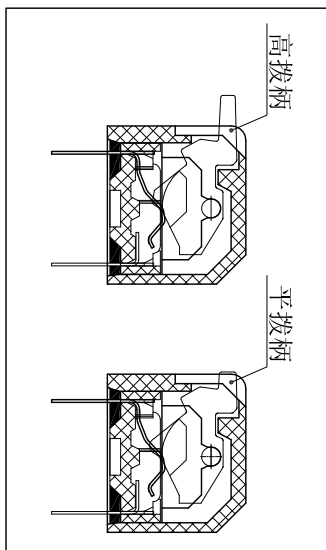
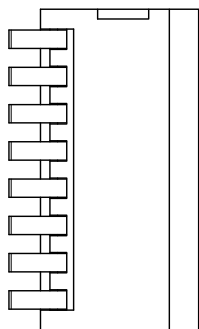


REV	ECN	CONTENT	CHECK	DATE
V0.0		初版发行	LJ	2019.01.13
V1.0		整理图纸	WL	2020.06.03



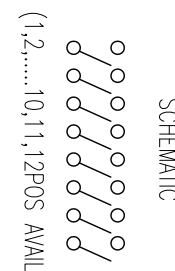
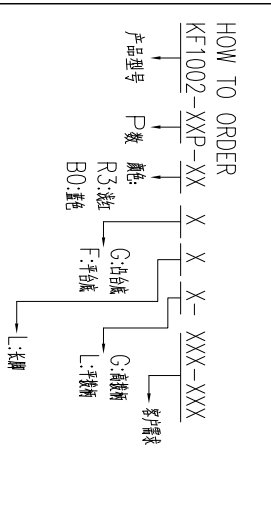
1P与2P无10G0, 且只有平台底座规格

DIM A	长针
凸台底座	3.65
平台底座	3.80



- 技术要求:
- 额定电流: 25mA, 24VDC (开与关切换时) 100mA, 50VDC (开与关不切换时)
  - 接触阻抗:  $\leq 50m\Omega$  (初始),  $\leq 100m\Omega$  (寿命测试后)
  - 绝缘电阻:  $\geq 100M\Omega / 500 VDC$
  - 耐电压: 500VAC/1minute
  - 拨动力: 1000g max
  - 机械寿命:  $\geq 2000$  cycles
  - 使用温度:  $-40^{\circ}C \sim +85^{\circ}C$
  - 存储温度:  $-40^{\circ}C \sim +85^{\circ}C$
  - 符合RoHS要求

焊接说明:  
 手工焊接: 30W电烙铁,  $320 \pm 5^{\circ}C$ , 3S max  
 波峰焊接:  $250 \pm 10^{\circ}C$ , 5S max  
 焊接前保持开关在“OFF”状态

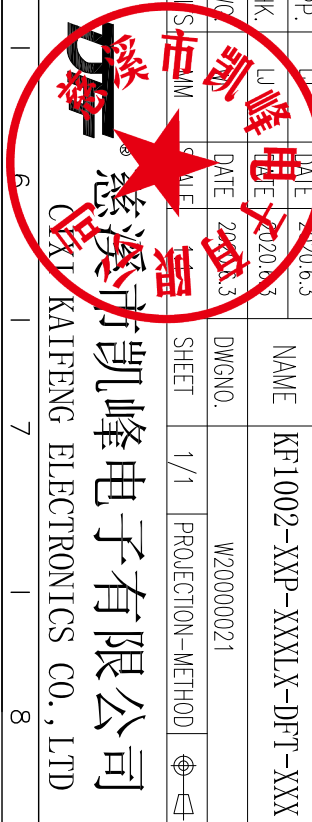


General tolerance in mm			radii and chamfers			shorter angle side		
over	to	±	over	to	±	over	to	±
0	3	±0.15	0	0.5	±0.2	0	10	±30°
3	6	±0.2	0.5	3	±0.5	10	50	±20°
6	30	±0.25	3	6	±1.0	50	120	0.5
30	120	±0.3	6	10	±1.0	100	100	0.2
120	400	±0.5	10	3	±0.5	150	150	0.3
400	1000	±0.8	3	6	±1.0	100	100	0.3
1000			6	10	±1.0	150	150	0.5

POLES	DIM P	DIM L
1	/	4.11
2	2.54	6.65
3	5.08	9.19
4	7.62	11.73
5	10.16	14.27
6	12.70	16.81
7	15.24	19.35
8	17.78	21.89
9	20.32	24.43
10	22.86	26.97
11	25.40	29.51
12	27.94	32.05

5	PIN2	/	P	铜合金	镀金
4	PIN1	/	P	铜合金	镀金
3	底座	/	1	工程塑料	UL94V-0
2	拔柄	/	P	工程塑料	UL94V-0
1	外壳	/	1	工程塑料	UL94V-0

APP.	DATE	2020.6.3	NAME	KF1002-XXP-XXXLX-DFT-XXX
CHK.	DATE	2020.6.3	DWGNO.	W20000021
DESIGNER	DATE	2020.6.3	SHEET	1/1
PROJ. MGR	DATE	2020.6.3	PROJECTION-METHOD	☉



凯峰电子有限公司  
 KAIFENG ELECTRONICS CO., LTD

## X-ON Electronics

Largest Supplier of Electrical and Electronic Components

*Click to view similar products for [DIP Switches/SIP Switches](#) category:*

*Click to view products by [KAIFENG](#) manufacturer:*

Other Similar products are found below :

[79B10T](#) [8136-475G4T](#) [G7G-1A2-CB-DC12](#) [H7CZL8AC100240](#) [DRR60016](#) [DRS4016](#) [1825444-1](#) [200183](#) [206002](#) [219-6LPSTRF](#)  
[25.350.0653.0](#) [SBS 5004 TG](#) [SDA10H1BDA](#) [97R06ST](#) [A2C-2A5](#) [1825444-7](#) [ADE08SA04](#) [ADE12S04](#) [192960010](#) [206005RAS](#) [206007](#) [2-](#)  
[1825058-8](#) [25.330.0653.1](#) [25.352.0353.0](#) [CXDRIVEV2X](#) [IKN0600000](#) [IKN0800000](#) [LA2-002-DC24](#) [DSR02T](#) [DSS 208 N](#)  
[E2FMX2D1M1TGJ03M](#) [NDI10H](#) [219-9MSTP](#) [EPM02FV](#) [206010RAST](#) [NDS08V](#) [76SB05](#) [TD06H0SK1](#) [Z7.255.9027.0](#) [1-1825058-3](#)  
[1825428-4](#) [219-10LPSTF](#) [E3ZG6111D03M](#) [G4D212PUSTV2DC5](#) [EPG301BT06](#) [219-7LPSTRF](#) [1-1825058-6](#) [E3TSL23M5J03M](#) [Y5795](#)  
[7R0060](#)