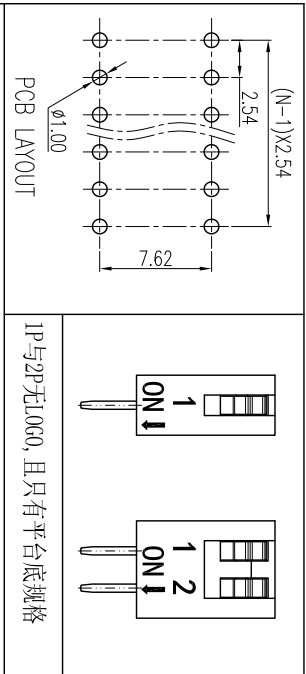
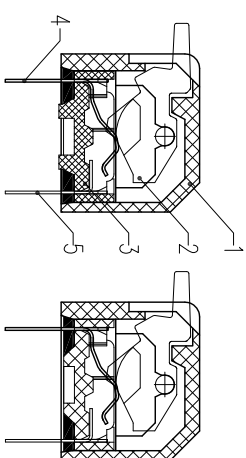
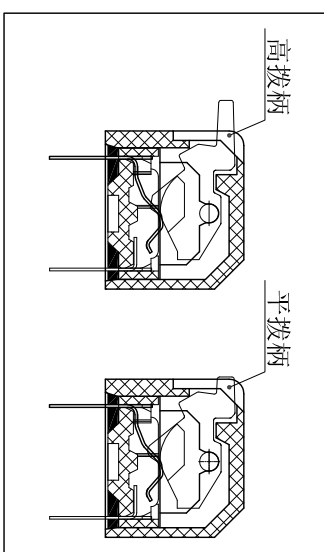
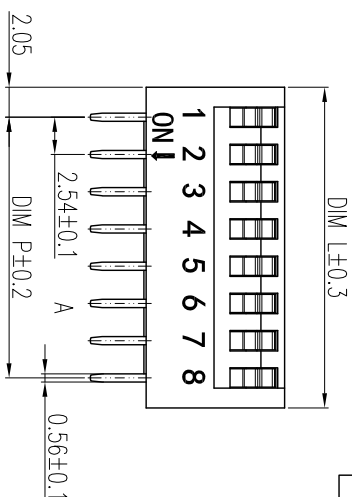
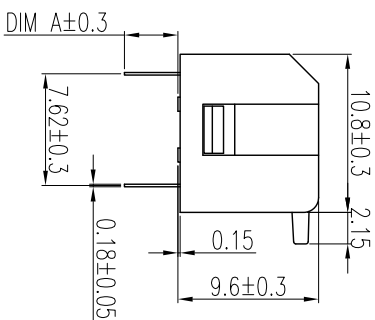


REV	ECN	CONTENT	CHECK	DATE
V0.0		初版发行	LJ	2019.01.13
V1.0		整理图纸	WL	2020.06.03

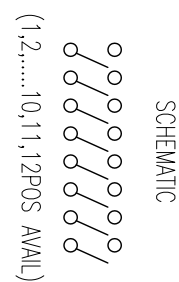
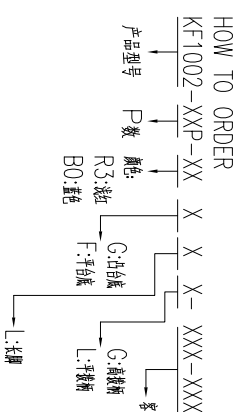


DIM A	长针
凸台底座	3.65
平台底座	3.80



- 技术要求:
- 额定电流: 25mA, 24VDC (开与关切换时) 100mA, 50VDC (开与关不切换时)
 - 接触阻抗: $\leq 50m\Omega$ (初始), $\leq 100m\Omega$ (寿命测试后)
 - 绝缘电阻: $\geq 100M\Omega/500VDC$
 - 耐电压: 500VAC/1minute
 - 拨动力: 1000g max
 - 机械寿命: ≥ 2000 cycles
 - 使用温度: $-40^\circ C \sim +85^\circ C$
 - 存储温度: $-40^\circ C \sim +85^\circ C$
 - 符合RoHS要求

焊接说明:
 手工焊接: 30W电烙铁, $320 \pm 5^\circ C$, 3S max
 波峰焊接: $250 \pm 10^\circ C$, 5S max
 焊接前保持开关在“OFF”状态



General tolerance in mm

radii and chamfers

shorter angle side

≡ //

over 0 to ±0.15	over 3 to ±0.2	over 6 to ±0.25	over 30 to ±0.3	over 120 to ±0.5	over 400 to ±0.8	over 0.5 to ±0.2	over 3 to ±0.5	over 6 to ±1.0	up to ±1°	over 10 to ±30'	over 50 to ±20'	over 100 to 0.5	over 100 to 0.2	over 100 to 0.3	over 150 to 0.5
-----------------	----------------	-----------------	-----------------	------------------	------------------	------------------	----------------	----------------	-----------	-----------------	-----------------	-----------------	-----------------	-----------------	-----------------

POLES	DIM P	DIM L
1	/	4.11
2	2.54	6.65
3	5.08	9.19
4	7.62	11.73
5	10.16	14.27
6	12.70	16.81
7	15.24	19.35
8	17.78	21.89
9	20.32	24.43
10	22.86	26.97
11	25.40	29.51
12	27.94	32.05

序号	零件名称	零件编码	数量	材质	备注
1	外壳	/	1	工程塑料	UL94V-0
2	底座	/	1	工程塑料	UL94V-0
3	PIN1	/	1	铜合金	镀金
4	PIN2	/	1	铜合金	镀金

APP.	DATE	2020.6.3	NAME	KF1002-XXP-XXXXLX-0N-XXX
CHK.	DATE	2020.6.3	DWGNO.	W20004301
DWG.	DATE	2020.6.3	SHEET	1/1
UNITS	MM	SCALE	1:1	PROJECTION-METHOD

DFE 慈溪市凯峰电子有限公司
 CIXI KAIFENG ELECTRONICS CO., LTD

X-ON Electronics

Largest Supplier of Electrical and Electronic Components

Click to view similar products for [DIP Switches/SIP Switches](#) category:

Click to view products by [KAIFENG](#) manufacturer:

Other Similar products are found below :

[79B10T](#) [8136-475G4T](#) [G7G-1A2-CB-DC12](#) [DRS4016](#) [1825444-1](#) [193005MS](#) [195010MS](#) [200183](#) [206002](#) [208004](#) [208007ST](#) [208008](#)
[25.350.0653.0](#) [SDA10H1BDA](#) [97R06ST](#) [A2C-2A5](#) [1825444-7](#) [ADE12S04](#) [206005RAS](#) [206007](#) [209005LPST](#) [2-1825058-8](#) [219002LPST](#)
[219002MSTJRF](#) [219012MST](#) [25.352.0353.0](#) [CXDRIVEV2X](#) [LA2-002-DC24](#) [DSR02T](#) [193004MS](#) [E2FMX2D1M1TGJ03M](#) [NDI10H](#) [219-](#)
[9MSTP](#) [219008LPSTR](#) [EPM02FV](#) [206010RAST](#) [76SB05](#) [TD06H0SK1](#) [Z7.255.9027.0](#) [1-1825058-3](#) [1825428-4](#) [219-10LPSTF](#)
[E3ZG6111D03M](#) [G4D212PUSTV2DC5](#) [HARW0002](#) [EPG301BT06](#) [1-1825058-6](#) [E3TSL23M5J03M](#) [Y5795](#) [7R0060](#)