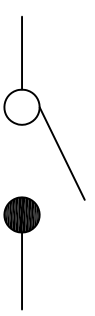
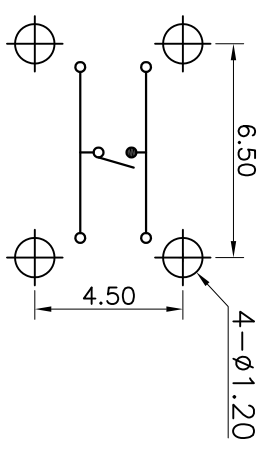
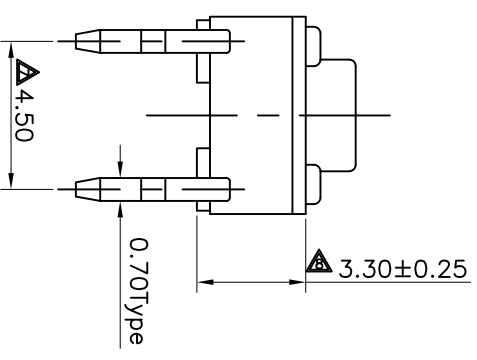
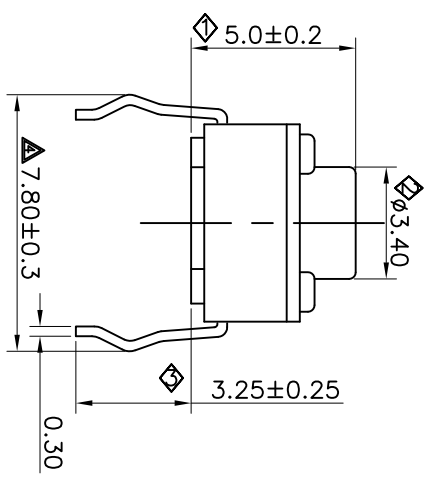
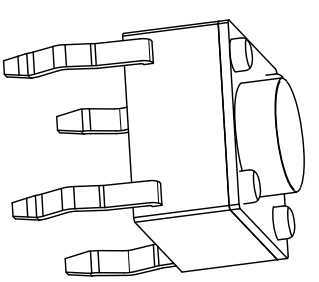
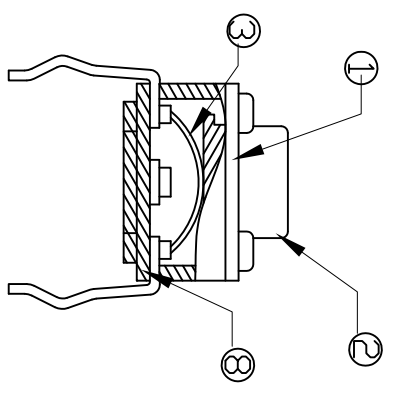
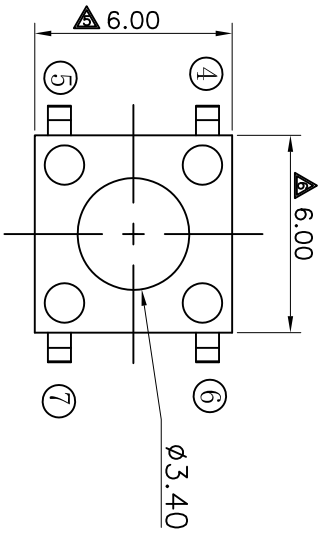


ABIDE BY ROHS



PCB Layout(Pattern Side)

Circuit Diagram

- SPECIFICATIONS
- 1. Rating: DC12V 50mA
  - 2. Contact Resistance: 50mΩ MAX
  - 3. Insulation Resistance: 100MΩ MIN
  - 4. Withstand Voltage: AC 250V for 1 minute
  - 5. Travel: 0.25±0.10mm
  - 6. Operating Force: 250±50gf
  - 7. Life: 100,000 Cycles MIN

ITEM	PART NAME	TERRNO.	QTY.	MATERIAL	FINISHING	REMARK
⑧	Base	1	1	PA66	Black	
⑦	Terminal	4	1	Brass	Plating Silver	
⑥	Terminal	3	1	Brass	Plating Silver	
⑤	Terminal	2	1	Brass	Plating Silver	
④	Terminal	1	1	Brass	Plating Silver	
③	Contact	1	1	Copper-silver Composite		
②	Keystoke	1	1	PA66	Black	
①	Cover	1	1	Iron	plating Nickel	

APPROVALS		DATE	PART NO.		TITLE:	
DRAWN		wanwenxue	Nov.28.2005		Jact Switch	
CHECKED					Kaitih	
APPROVALS			CTA603201D02		东莞市凯华电子有限公司 KAHUA ELECTRONICS CO.,LTD	
TOLERANCES ARE		30±1	±0.30	ANGLE	UNIT: mm	SCALE: 1:1
		10-15±0.10	±0.20	±2	DRAWING NO. KHA-TA6032-008EN	PROJ. SHEET 1 OF 1
		1-5	±0.15			

ECN NO.	REV.	DATE.	DESCRIPTION.	CHANGE.	CHECK.	APPRO.
	A		NEW			

## X-ON Electronics

Largest Supplier of Electrical and Electronic Components

*Click to view similar products for [Tactile Switches](#) category:*

*Click to view products by [Kailh](#) manufacturer:*

Other Similar products are found below :

[5GTH92001](#) [5GTH9202242](#) [6407-250V-25273P](#) [ADTSA62NV](#) [ADTSA62RV](#) [B3F-3123](#) [1977177-8](#) [1977266-1](#) [ADTSA63NV](#)  
[ADTSM21NSVTR](#) [ADTSM25RVTR](#) [ADTSM32NVTR](#) [ADTSMW64RV](#) [FSMRA4JHA04](#) [GS4.70F300QP](#) [KSC241J SP DELTA LFS](#)  
[3FTL600RAS](#) [3FTL640RAS](#) [Y96K132V0FPLFS](#) [5GTH9658222](#) [6407-250V-25343P](#) [ADTSM31NVTR](#) [2-1977120-7](#) [TSJW-5.2-260-TR](#)  
[KMT011MNGJLHS](#) [B3WN6002S](#) [70-201.0](#) [ADTSG648NV](#) [ADTSM62KSVTR](#) [ADTSM648NV](#) [95C06E3RAT](#) [5GTH96561](#) [3ATH9Q](#)  
[FSMRA8JHA04](#) [HARS0073](#) [Y33R411N9FPLFT](#) [Y31C01402FPLFS](#) [PTS645SK50SMTR92](#) [ADTSM32NVB](#) [KMS233GPWTLFG](#)  
[Y78B64124FP](#) [Y96D113G0FP LFS](#) [Y33A812C5FP LFT](#) [Y56B2D120FP LFS](#) [PTS645 DVM83-BN125-2 LFS](#) [B3W 1000G](#) [KSC621G OL](#)  
[LFS](#) [B3F 1002C](#) [B3F 0047H](#) [B3F 1000G](#)