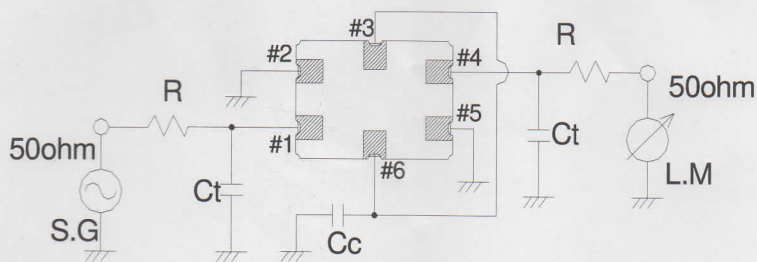


MONOLITHIC CRYSTAL FILTER SPECIFICATION

1/2

1.MODEL	D38830GQ3
2.PARTS NUMBER(USER)	
3.TYPE	DSF753SDF(4POLE)
4.ELECTRICAL PERFORMANCES	
4-1.Nominal Frequency	38.850 MHz (Fundamental)
4-2.Passband Width	+/- 15.0 kHz MIN./ 3dB
4-3. Stopband Width	+/- 25.0 kHz MAX./ 10dB
4-4. Insertion Loss	4.0 dB MAX./ (MINIMUM LOSS)
4-5. Ripple	1.0 dB MAX.
4-6. Guaranteed Attenuation	75 dB MIN./ (f0±910kHz)
4-7.Spurious Response	30 dB MIN./ (f0+100kHz~+1000kHz)
4-8.Terminal Impedance	1620 ohm+/-10% 0.3 pF+/-0.5pF
4-9.Insulation Resistance	500 M ohm MIN. / DC 100V (Between Case and IN/OUT Terminal)
4-10. Maximum Input level	-10 dBm
4-11.Operating Temperature Range	-20 to +70 deg.C

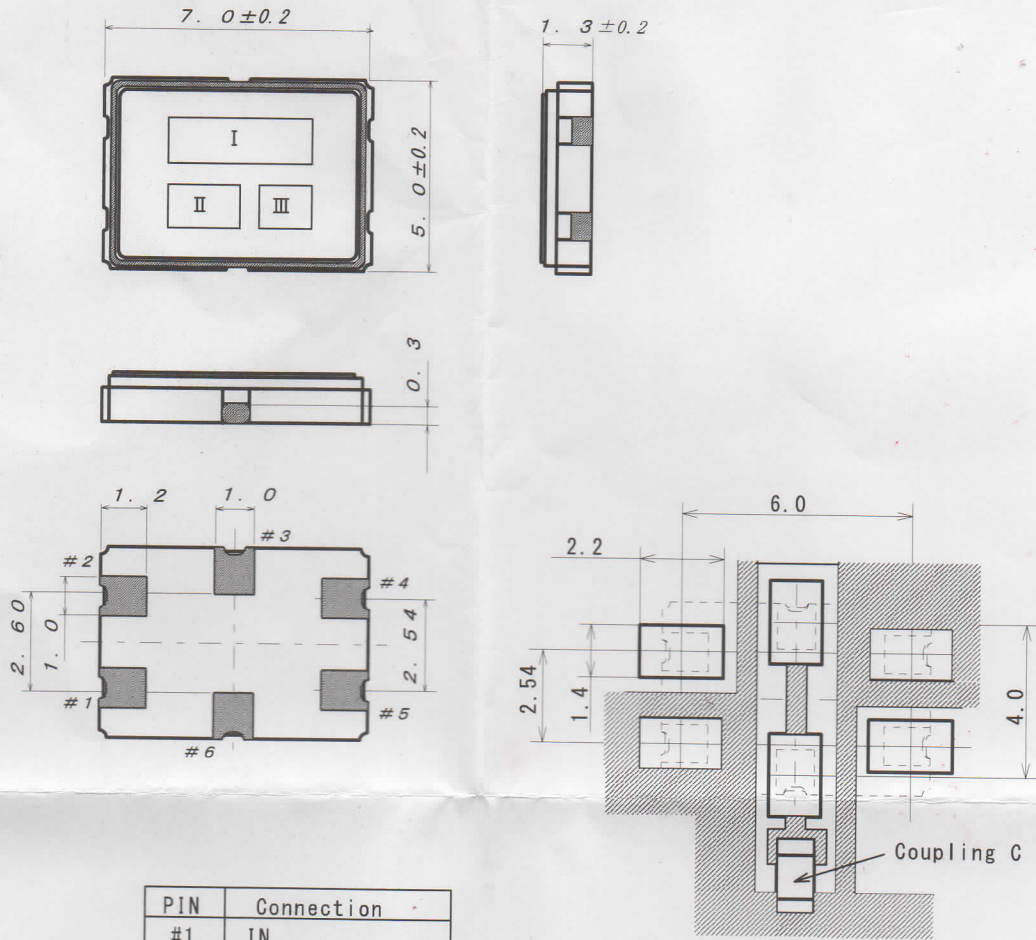
5.TEST CIRCUIT



R = 1570 ohm
 Ct= 0.3 pF(floating capacity included)
 Cc= 3.5 pF(floating capacity included)

				DWG. No.
		DATE	2013/05/27	

6. Dimensions



PIN	Connection
#1	IN
#2	GND
#3	Connect With #6
#4	OUT
#5	GND
#6	Connect With #3

7. Marking

- (I) Model 38830GQ3
- (II) Maker KDS
- (III) Manufactured Year Month(*1) 9K
 - (*1)Year The last digit of the year of the Christian Era should be corresponded to the Arabic figures.

JAN.	FEB.	MAR.	APR.	MAY.	JUN.	JUL.	AUG.	SEP.	OCT.	NOV.	DEC.
A	B	C	D	E	F	G	H	J	K	L	M

				DWG. No.
		DATE	2013/05/27	

X-ON Electronics

Largest Supplier of Electrical and Electronic Components

Click to view similar products for [Active Filter](#) category:

Click to view products by [KDS](#) manufacturer:

Other Similar products are found below :

[1D38810GQ2](#) [1D73312GQ22](#) [1D38830GQ3](#) [D51510GQ1](#) [D45015GQ42](#) [HMC894LP5ETR](#) [HMC896LP4ETR](#) [HMC891LP5ETR](#)
[MAX7491CEE+](#) [MAX7415CUA+](#) [MAX7413CPA+](#) [MAX7411CPA+](#) [MAX7410CPA+](#) [MAX7405EPA+](#) [MAX7413CUA+](#) [MAX7411CUA+](#)
[MAX7408CPA+](#) [MAX7405CPA+](#) [MAX7401EPA+](#) [MAX293CWE+](#) [MAX281AEWE+](#) [MAX275ACPP+](#) [MAX264BEPI+](#) [MAX263BEPI+](#)
[MAX293ESA+](#) [MAX280EPA+](#) [MAX275AEPP+](#) [MAX268BCWG+](#) [MAX263AEPI+](#) [MAX7423EUA+T](#) [LT1568CGN#PBF](#)
[LTC1062CSW#PBF](#) [LTC1562CG-2#PBF](#) [HMC881LP5ETR](#) [HMC882LP5ETR](#) [HMC1000LP5ETR](#) [LTC1569CS8-6#PBF](#) [LTC1563-](#)
[2IGN#PBF](#) [MAX7426EPA+](#) [MAX7426CPA+](#) [MAX7410EPA+](#) [MAX7407EPA+](#) [MAX7407CPA+](#) [MAX7427CPA+](#) [MAX7412CPA+](#)
[MAX7404EPA+](#) [MAX7404CPA+](#) [MAX7400EPA+](#) [MAX7400CPA+](#) [MAX296EPA+](#)