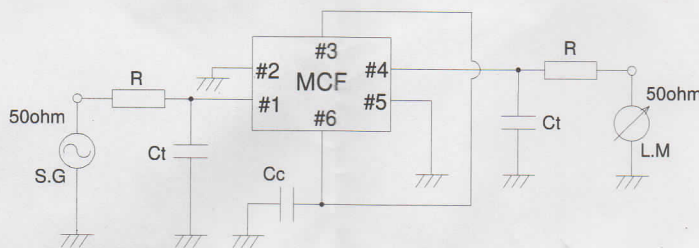


1. Model	D73312GQ22
2. Parts number(USER)	
3. Type	DSF753SDF(4pole)
4. Electrical performances	
(1) Nominal Frequency	73.350 MHz(fundamental)
(2) Pass Bandwidth	±6.00 kHz MIN./ 3dB (at 25°C)
(3) Passband Ripple	1.5 dB MAX. (at 25°C)
(4) Insertion Loss	5.0 dB MAX. / minimum loss (at 25°C)
(5) Stop Bandwidth	±12.50 kHz MAX./ 18dB (at 25°C) ±25.00 kHz MAX./ 40dB
(6) Guaranteed Attenuation	65 dB MIN. / f0+350~+1000kHz 80 dB MIN. / f0-350~-1000kHz 85 dB MIN. / f0±4.5MHz
(7) Group Delay	60 μsec MAX./ f0 +/- 6.0kHz
(8) Inter Modulation	-120 dBm Max. / input level = -30dBm f0±25kHz & ±50kHz
(9) Maximum Inputlevel	-10 dBm
(10) Terminal Impedance	380 Ω ± 10% 5.0 pF ± 10%

5. Temperature range

(1) Operating temperature range -30 ~ +70 °C

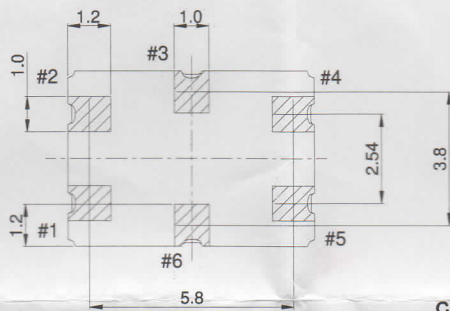
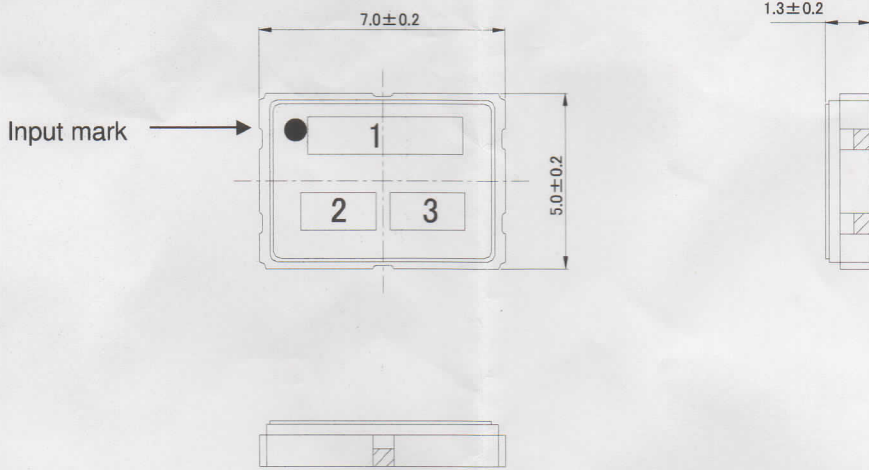
6. Test circuit



R=330 Ω
Ct=5.0 pF(floating capacity included)
Cc=11 pF(floating capacity included)

TITLE DSF753SBF TYPE MONOLITHIC CRYSTAL FILTER SPECIFICATION		Remark	
Date 2010/06/17	Spec. No. 1D73312GQ22	Rev.	Page 1/2

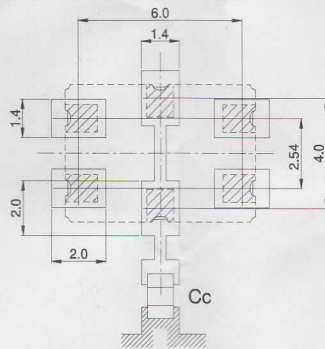
7. Dimensions (Unit: mm)



Pin	Connection
#1	INPUT
#2	GND
#3	Connect with #6
#4	OUTPUT
#5	GND
#6	Connect with #3

coplanarity : within 0.1

Recommended Land Pattern



8. Marking

(1) Model 73312GQ22

(2) Maker KDS

(3) Manufactured year month (*1)

(*1) Year The last digit of the year of the Christian Era should be corresponded to the Arabic figures.

JAN.	FEB.	MAR.	APR.	MAY.	JUN.	JUL.	AUG.	SEP.	OCT.	NOV.	DEC.
A	B	C	D	E	F	G	H	J	K	L	M

TITLE DSF753SBF TYPE MONOLITHIC CRYSTAL FILTER SPECIFICATION		Remark	
Date 2010/06/17	Spec. No. 1D73312GQ22	Rev.	Page 2/2

X-ON Electronics

Largest Supplier of Electrical and Electronic Components

Click to view similar products for [Active Filter](#) category:

Click to view products by [KDS](#) manufacturer:

Other Similar products are found below :

[1D38810GQ2](#) [1D73312GQ22](#) [1D38830GQ3](#) [D51510GQ1](#) [D45015GQ42](#) [HMC894LP5ETR](#) [HMC896LP4ETR](#) [HMC891LP5ETR](#)
[MAX7491CEE+](#) [MAX7415CUA+](#) [MAX7413CPA+](#) [MAX7411CPA+](#) [MAX7410CPA+](#) [MAX7405EPA+](#) [MAX7413CUA+](#) [MAX7411CUA+](#)
[MAX7408CPA+](#) [MAX7405CPA+](#) [MAX7401EPA+](#) [MAX293CWE+](#) [MAX281AEWE+](#) [MAX275ACPP+](#) [MAX264BEPI+](#) [MAX263BEPI+](#)
[MAX293ESA+](#) [MAX280EPA+](#) [MAX275AEPP+](#) [MAX268BCWG+](#) [MAX263AEPI+](#) [MAX7423EUA+T](#) [LT1568CGN#PBF](#)
[LTC1062CSW#PBF](#) [LTC1562CG-2#PBF](#) [HMC881LP5ETR](#) [HMC882LP5ETR](#) [HMC1000LP5ETR](#) [LTC1569CS8-6#PBF](#) [LTC1563-](#)
[2IGN#PBF](#) [MAX7426EPA+](#) [MAX7426CPA+](#) [MAX7410EPA+](#) [MAX7407EPA+](#) [MAX7407CPA+](#) [MAX7427CPA+](#) [MAX7412CPA+](#)
[MAX7404EPA+](#) [MAX7404CPA+](#) [MAX7400EPA+](#) [MAX7400CPA+](#) [MAX296EPA+](#)