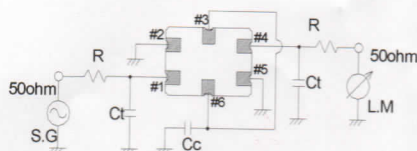


MONOLITHIC CRYSTAL FILTER SPECIFICATION

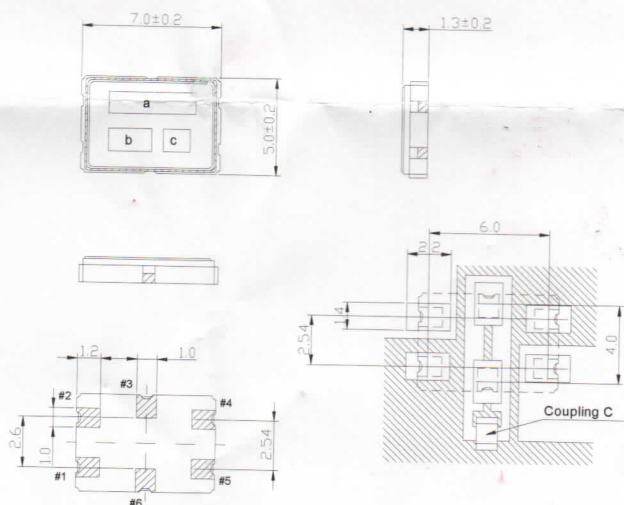
1 / 1

1.MODEL	D45015GQ42
2.PARTS NUMBER(USER)	
3.TYPE	DSF753SDF
4.ELECTRICAL PERFORMANCES	
4-1.Nominal Frequency	45.000 MHz
4-2.Pass Bandwidth	+/- 7.50 kHz MIN./ 3dB
4-3.Stop Bandwidth	+/- 25.00 kHz MAX./ 30dB
4-4.Insertion Loss	4.0 dB MAX./ (MINIMUM LOSS)
4-5.Ripple	1.0 dB MAX.
4-6.Guaranteed Attenuation	70 dB MIN./($f_0 \pm 910\text{kHz}$)
4-7.Spurious Response	45 dB MIN.
4-8.Maximum Input level	-10 dBm
4-9.Terminal Impedance	570 ohm +/- 10%
	3.0 pF +/- 0.5pF
4-10.Insulation Resistance	500 M ohm MIN. / DC 100V (Between Case and IN/OUT Terminal)
4-11.Operating Temperature Range	-20 to +70 deg.C
5.TEST CIRCUIT	



R=520ohm
Ct=3.0pF(floating capacity included)
Cc=11.0pF(floating capacity included)

6.Dimensions



7.Marking

- (a) Model
(b) Maker
(c) Manufactured Year Month(*1)

(*1)Year The last digit of the year of the Christian Era should be corresponded to the Arabic figures.

JAN.	FEB.	MAR.	APR.	MAY.	JUN.	JUL.	AUG.	SEP.	OCT.	NOV.	DEC.
A	B	C	D	E	F	G	H	J	K	L	M

PIN	Connection
#1	IN
#2	GND
#3	Connect With #6
#4	OUT
#5	GND
#6	Connect With #3

				DWG. No.
		DATE	2012/9/10	

X-ON Electronics

Largest Supplier of Electrical and Electronic Components

Click to view similar products for [Active Filters](#) category:

Click to view products by [KDS](#) manufacturer:

Other Similar products are found below :

[VEMI256A-SD2-G4-08](#) [1D38810GQ2](#) [1D38830GQ3](#) [MAX274AENG+](#) [LTC1063CN8#PBF](#) [LTC1062CN8#PBF](#) [D45015GQ42](#)
[MAX294CPA+](#) [N1298C](#) [LTC1562IG#PBF](#) [MAX7413EUA+T](#) [MAX262BENG+](#) [MAX274ACNG+](#) [MAX275BCWP+](#) [MAX291EPA+](#)
[MAX293CPA+](#) [MAX7410EUA+](#) [MAX7410CUA+](#) [MAX7490EEE+](#) [MAX7414EUA+T](#) [MAX7413EUA+](#) [MAX296CPA+](#) [MAX293EPA+](#)
[FMS6141CSX](#) [FMS6141S5X](#) [FMS6144AMTC14X](#) [FMS6151L6X](#) [FMS6406CSX](#) [MAX7401ESA+](#) [MAX7480ESA+](#) [MAX7404CSA+](#)
[MAX7403ESA+](#) [MAX291CSA+](#) [BA3835F-E2](#) [TLC04CD](#) [TLC04ID](#) [TLC14CD](#) [TLC14ID](#) [UAF42AP](#)