

LOW COLLECTOR SATURATION VOLTAGE LARGE CURRENT

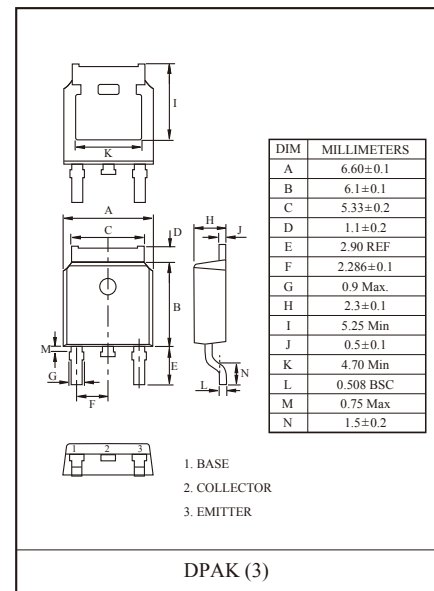
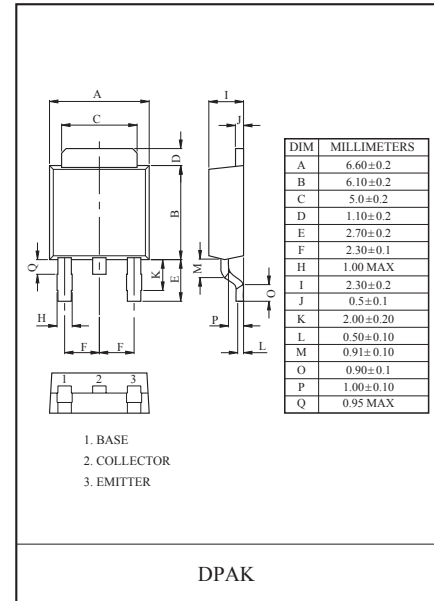
FEATURES

- Complementary to KTC5103D
- Suffix U : Qualified to AEC-Q 101
ex) KTA1385D-O-RTF/HU

MAXIMUM RATING (Ta=25°C)

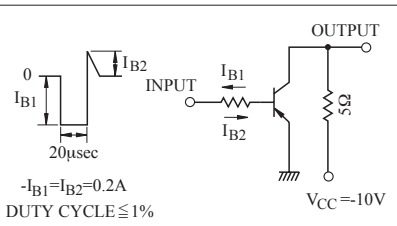
CHARACTERISTIC	SYMBOL	RATING	UNIT
Collector-Base Voltage	V_{CBO}	-60	V
Collector-Emitter Voltage	V_{CEO}	-60	V
Emitter-Base Voltage	V_{EBO}	-7	V
Collector Current	DC	I_C	-5
	Pulse *	I_{CP}	-8
Base Current	I_B	-1	A
Collector Power Dissipation	Ta=25°C	P_C	1.0
	Tc=25°C		15
Junction Temperature	T_j	150	°C
Storage Temperature Range	T_{stg}	-55 ~ 150	°C

* PW ≤ 10ms, Duty Cycle ≤ 50%



ELECTRICAL CHARACTERISTICS (Ta=25°C)

CHARACTERISTIC	SYMBOL	TEST CONDITION	MIN.	TYP.	MAX.	UNIT
Collector Cut-off Current	I_{CBO}	$V_{CB}=-50V, I_E=0$	-	-	-10	μA
Emitter Cut-off Current	I_{EBO}	$V_{EB}=-7V, I_C=0$	-	-	-10	μA
DC Current Gain	h_{FE1}	$V_{CE}=-1V, I_C=-0.1A$	60	-	-	
	h_{FE2} (Note)	$V_{CE}=-1V, I_C=-2A$	160	-	400	
	h_{FE3}	$V_{CE}=-2V, I_C=-5A$	50	-	-	
Collector-Emitter Saturation Voltage *	$V_{CE(sat)}$	$I_C=-2A, I_B=-0.2A$	-	-0.14	-0.3	V
Base-Emitter Saturation Voltage *	$V_{BE(sat)}$	$I_C=-2A, I_B=-0.2A$	-	-0.9	-1.2	V
Switching Time	Turn On Time	t_{on}	-	0.15	1	
	Storage Time	t_{stg}	-	0.78	2.5	μS
	Fall Time	t_f	-	0.18	1	

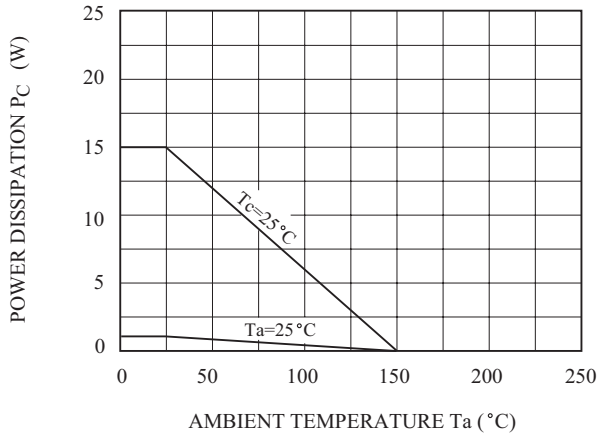


* Pulse test : PW ≤ 350 μS, Duty Cycle ≤ 2% Pulse

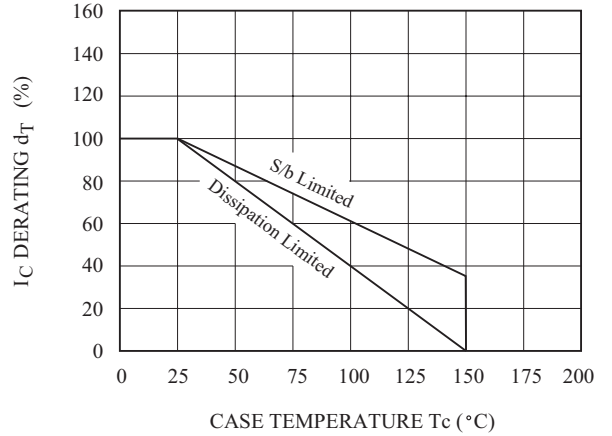
Note) $h_{FE(2)}$ Classification : O:160 ~ 320, Y:200 ~ 400.

KTA1385D

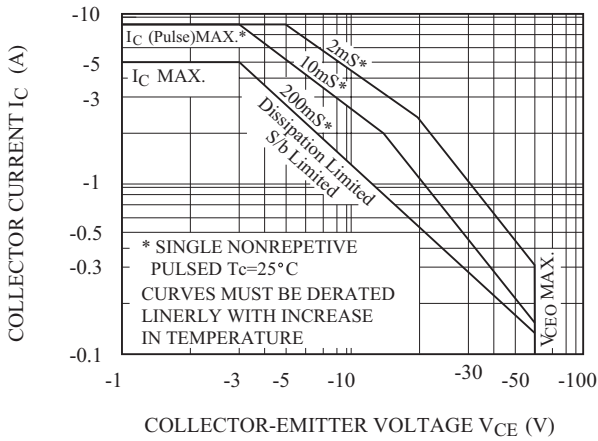
Pc - Ta



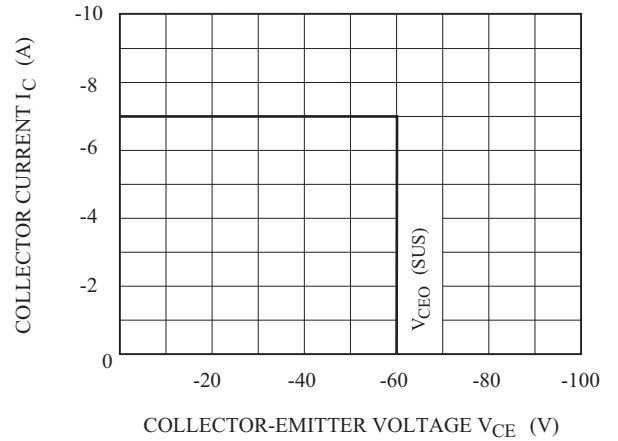
$d_T - T_C$



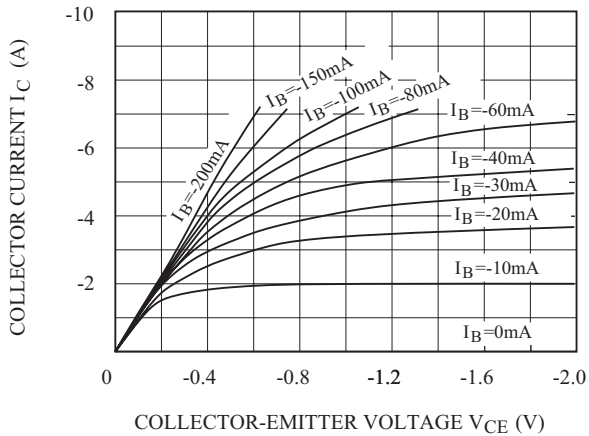
SAFE OPERATING AREA



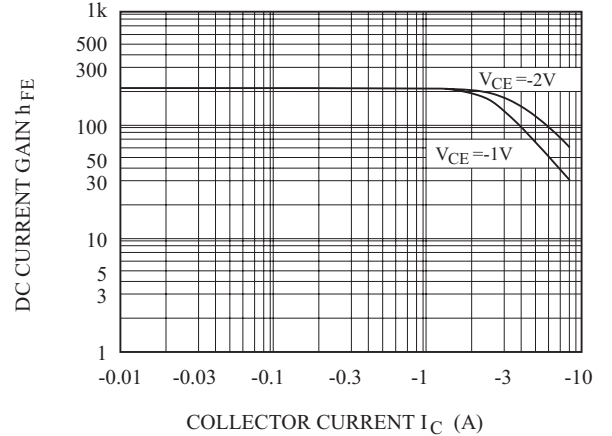
REVERSE BIAS SAFE OPERATING AREA



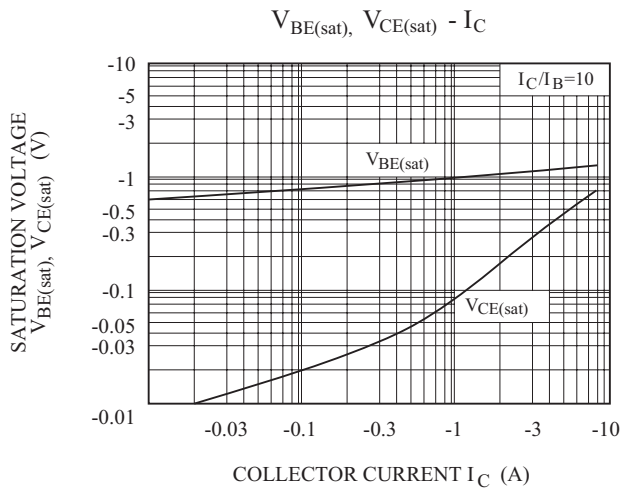
$I_C - V_{CE}$



$h_{FE} - I_C$



KTA1385D



X-ON Electronics

Largest Supplier of Electrical and Electronic Components

Click to view similar products for [Bipolar Transistors - BJT category](#):

Click to view products by [KEC manufacturer](#):

Other Similar products are found below :

[BC559C](#) [MCH4017-TL-H](#) [MMBT-2369-TR](#) [BC546/116](#) [NJVMJD148T4G](#) [NTE16](#) [NTE195A](#) [IMX9T110](#) [2N4401-A](#) [2N6728](#) [2SA1419T-TD-H](#) [2SB1204S-TL-E](#) [2SC5488A-TL-H](#) [FMC5AT148](#) [2N2369ADCSM](#) [2N2907A](#) [2N3904-NS](#) [2N5769](#) [2SC4618TLN](#) [CPH6501-TL-E](#) [US6T6TR](#) [BAX18/A52R](#) [BC556/112](#) [IMZ2AT108](#) [MMST8098T146](#) [MCH6102-TL-E](#) [BC846B-13-F](#) [2N3879](#) [30A02MH-TL-E](#) [NTE13](#) [NTE282](#) [NTE323](#) [NTE350](#) [NTE81](#) [JANTX2N2920L](#) [JANSR2N2907AUB](#) [CMLT3946EG TR](#) [SNSS40600CF8T1G](#) [CMLT3906EG TR](#) [GRP-DATA-JANS2N2907AUB](#) [GRP-DATA-JANS2N2222AUA](#) [MMDT3946FL3-7](#) [2N4240](#) [JANS2N3019](#) [MSB30KH-13](#) [2N2221AUB](#) [2SD1815T-TL-E](#) [2N6678](#) [2N2907Ae4](#) [JAN2N3507](#)