

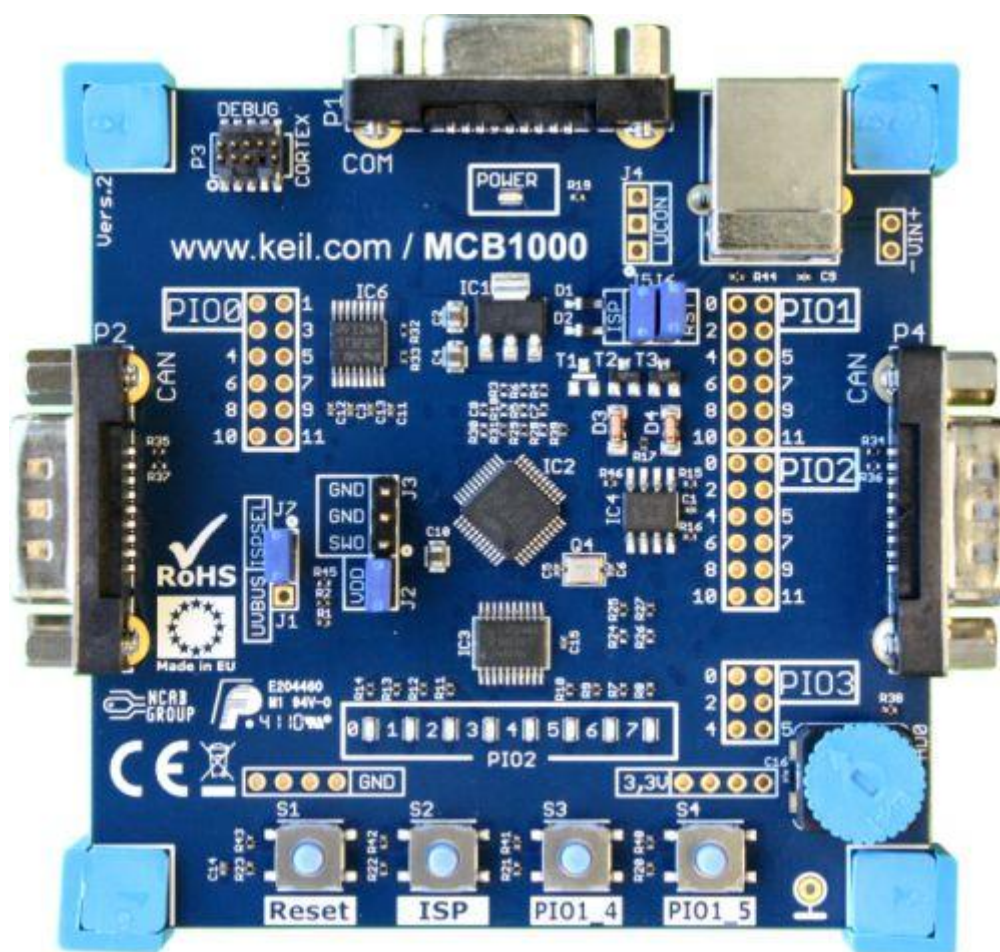
Introduction

[Home](#) » Introduction

The Keil **MCB1000 Evaluation Board** allows you to generate and test application programs for the NXP LPC11xx and NXP LPC13xx device families. With this hands-on process, you can determine the hardware and software requirements for current and future product development.

This board is available in five configurations: the **MCB11U10**, the **MCB1114**, the **MCB11C14**, the **MCB1313** and the **MCB1343**.

- The **MCB11U10** is populated with the [NXP LPC11U14/201](#) Cortex-M0 device (See 2nd note below).
- The **MCB1114** is populated with the [NXP LPC1114FBD48/302](#) Cortex-M0 device.
- The **MCB11C14** is populated with the [NXP LPC11C14FB48/301](#) Cortex-M0 device with CAN support.
- The **MCB1313** is populated with the [NXP LPC1313FBD48](#) Cortex-M3 device.
- The **MCB1343** is populated with the [NXP LPC1343FBD48](#) Cortex-M3 device with USB support.



Note

- Except as noted, this manual uses **MCB1000** as a generic term to refer to the **MCB11U10**, the **MCB1114**, the **MCB11C14**, the **MCB1313** or the **MCB1343** board.
- The MCB11U10 PCB is physically identical to the MCB1114 PCB but the silkscreen information is different, because the port names and numbers used on the device are located on different pins for this device. The port/pin differences are noted on those pages that reference pinouts and are given in detail in the schematic.

X-ON Electronics

Largest Supplier of Electrical and Electronic Components

Click to view similar products for [Development Boards & Kits - ARM category](#):

Click to view products by [Keil manufacturer](#):

Other Similar products are found below :

[CWH-CTP-VSPA-YE_CY4541](#) [EVAL-ADUCM320IQSPZ_FRDM-KV31F](#) [POLYPOD-BGA324](#) [POLYPOD-TQ144](#) [POLYPOD-TQ176](#)
[KEA128LEDLIGHTRD_KIT_XMC42_EE1_001](#) [SAFETI-HSK-RM48](#) [LS1024A-RDB](#) [ADM00573](#) [FRDM-KL28Z](#) [PICOHOBBITFL](#)
[MCIMX53-START-R](#) [TWR-K65F180M](#) [KEA128BLDCRD](#) [CC-ACC-MMK-2443](#) [STM8L1528-EVAL](#) [YSPKS5D9E10](#) [YGRPEACHFULL](#)
[TWR-MC-FRDMKE02Z](#) [TWR-K80F150M](#) [CY14NVSRAMKIT-001](#) [EVALSPEAR320CPU](#) [EVB-SCMIMX6SX](#) [MAXWSNENV#](#) [FM0-64L-S6E1C3](#) [MAX32600-KIT#](#) [TMDX570LS04HDK](#) [Z32F3840100KITG](#) [LS1021A-IOT-B](#) [SK-FM3-100PMC-MB9BF516N](#) [TXSD-SV70](#)
[YSTBS3A3E10](#) [YR8A77430HA02BG](#) [STM3240G-USB/NMF](#) [OM13080UL](#) [EVAL-ADUC7120QSPZ](#) [CYDP-KIT-13638](#) [OM13063UL](#)
[ATAVRPARROT](#) [OM13090UL](#) [YSPEHMI1S20](#) [TXSD-SV71](#) [YGRPEACHNORMAL](#) [SK-FM3-176PMC-ETHERNET](#) [HVP-KV11Z75M](#)
[OM13076UL](#) [LX2RDBKIT2-25G](#)