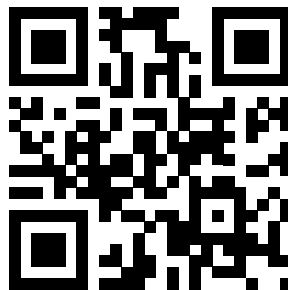


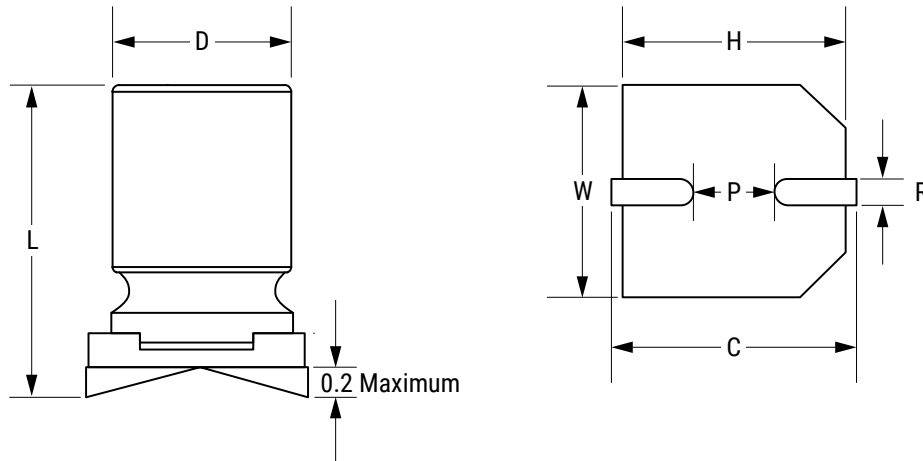
## Sample Kit Contents

KEMET Part Number	VDC	VDC Surge Voltage	Rated Capacitance 120 Hz 20°C (µF)	Case Size D x L (mm)	ESR 100 kHz 20°C (mΩ)	RC 100 kHz 105°C (mA)	LC 20°C 2 Minutes (µA)	Quantity
A765EB397M0ELAE020	2.5	2.9	390	6.3 x 5.7	20	2,800	300	5
A765KN108M0ELAE012	2.5	2.9	1000	8 x 9.7	12	4,260	500	5
A765BC107M0JLAE025	6.3	7.2	100	5 x 6	25	1,700	300	5
A765BG227M0JLAE020	6.3	7.2	220	5 x 7	20	2,700	300	5
A765EB227M0JLAE020	6.3	7.2	220	6.3 x 5.7	20	2,800	300	5
A765KH477M0JLAE016	6.3	7.2	470	8 x 7.5	16	3,220	592	5
A765KN687M0JLAE012	6.3	7.2	680	8 x 9.7	12	5,000	857	5
A765MU158M0JLAE010	6.3	7.2	1,500	10 x 12.6	10	4,100	1,890	5
A765EB157M1ALAE022	10	11.5	150	6.3 x 5.7	22	2,320	300	5
A765KN277M1ALAE020	10	11.5	270	8 x 9.7	20	3,600	540	5
A765MU687M1ALAE013	10	11.5	680	10 x 12.6	13	3,800	1,360	5
A765EB107M1CLAE025	16	18.4	100	6.3 x 5.7	25	2,500	320	5
A765EG157M1CLAE027	16	18.4	150	6.3 x 7	27	2,530	480	5
A765KN227M1CLAE016	16	18.4	220	8 x 9.7	16	3,700	704	5
A765KN277M1CLAE016	16	18.4	270	8 x 9.7	16	3,890	864	5
A765KN337M1CLAE016	16	18.4	330	8 x 9.7	16	3,890	1,056	5
A765MU108M1CLAE018	16	18.4	1000	10 x 12.6	18	4,300	3,200	5
A765EB476M1ELAE040	25	28.7	47	6.3 x 5.7	40	1,200	300	5
A765KN826M1ELAE029	25	28.7	82	8 x 9.7	29	2,700	410	5
A765KN107M1ELAE024	25	28.7	100	8 x 9.7	24	3,300	500	5
A765MU157M1ELAE050	25	28.7	150	10 x 12.6	50	3,800	750	5
A765MU227M1ELAE050	25	28.7	220	10 x 12.6	50	3,800	1,100	5
A765MU337M1ELAE020	25	28.7	330	10 x 12.6	20	2,890	1,650	5



[www.kemet.com/A765](http://www.kemet.com/A765)

## Dimensions – Millimeters



Size Code	D		L		W		H		C		R	P
	Nominal	Tolerance	Nominal	Tolerance	Nominal	Tolerance	Nominal	Tolerance	Nominal	Tolerance	Nominal	Nominal
BC	5	±0.5	6	±0.3	5.3	±0.2	5.3	±0.2	6.0	±0.2	0.5 - 0.8	1.4
BG	5	±0.5	7	±0.3	5.3	±0.2	5.3	±0.2	6.0	±0.2	0.5 - 0.8	1.4
EB	6.3	±0.5	5.7	±0.3	6.6	±0.2	6.6	±0.2	7.3	±0.2	0.5 - 0.8	2.1
EG	6.3	±0.5	7	±0.3	6.6	±0.2	6.6	±0.2	7.3	±0.2	0.5 - 0.8	2.1
EK	6.3	±0.5	8	±0.3	6.6	±0.2	6.6	±0.2	7.3	±0.2	0.5 - 0.8	2.1
EN	6.3	±0.5	9.7	±0.3	6.6	±0.2	6.6	±0.2	7.3	±0.2	0.5 - 0.8	2.1
KH	8	±0.5	7.5	±0.3	8.3	±0.2	8.3	±0.2	9.0	±0.2	0.8 - 1.1	3.2
KN	8	±0.5	9.7	±0.3	8.3	±0.2	8.3	±0.2	9.0	±0.2	0.8 - 1.1	3.2
MU	10	±0.5	12.6	±0.3	10.3	±0.2	10.3	±0.2	11.0	±0.2	0.8 - 1.1	4.6

## X-ON Electronics

Largest Supplier of Electrical and Electronic Components

*Click to view similar products for [Capacitor Kits](#) category:*

*Click to view products by [Kemet](#) manufacturer:*

Other Similar products are found below :

[1320838-1](#) [DK0035T](#) [KITMS11111](#) [DK0026T](#) [DK0033T](#) [TS0002](#) [ALU ENG KIT 07](#) [GRM03-KIT-CLASS2-DE](#) [MKV250V-KIT-1-DE](#)  
[MKV250V-KIT-2-DE](#) [744114](#) [GCJ-KIT-X7-DE-A](#) [GJM022-KIT-TTOL-DE](#) [GRM02-KIT-DE](#) [ACCU-P0402KITL1](#) [KITTYPE2100 LF](#)  
[KITMS08051](#) [AY21-KIT-HF](#) [SS016M0047B1F-0407](#) [PPR ENG KIT 04](#) [ALU ENG KIT 02](#) [TAN ENG KIT 34](#) [CER ENG KIT 37](#) [CER ENG](#)  
[KIT 36](#) [ALU ENG KIT 01](#) [VY2-KIT-MS](#) [ACCU-P0402KITL2](#) [TS0003](#) [ACCU-P0201KITL2](#) [FPCAP-SMD-KIT](#) [885070](#) [ALU ENG KIT 03](#)  
[ALU ENG KIT 05](#) [ALU ENG KIT 06](#) [DK0008T](#) [DK0015](#) [DK0036T](#) [DK0037T](#) [DK0081T](#) [DK0060T](#) [ESRD-KIT9](#) [MCF1000VKIT6](#) [MICA-](#)  
[KIT1](#) [MICA-KIT6](#) [MIN300VKIT1](#) [HOTC-KIT-KH](#) [iKIT60MM2V7A2S](#) [S-0402](#) [S-0603](#) [S-0805](#)