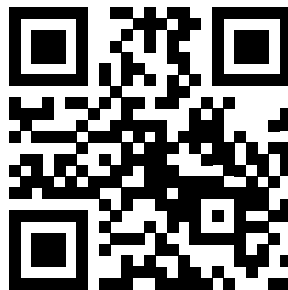


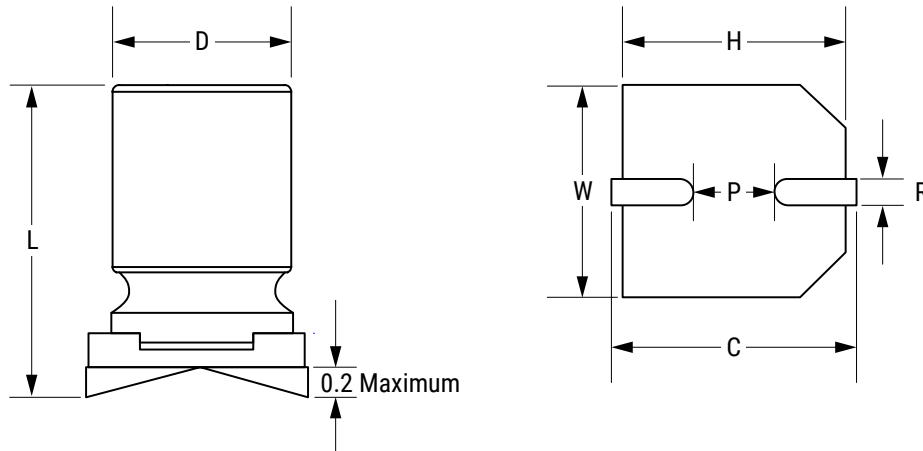
**Sample Kit Contents**

KEMET Part Number	VDC	VDC Surge Voltage	Rated Capacitance 120 Hz 20°C (µF)	Case Size D x L (mm)	ESR 100 kHz 20°C (mΩ)	RC 100 kHz 105°C (mA)	LC 20°C 2 Minutes (µA)	Quantity
A767KN476M1VLAE031	35	40.2	47	8 x 9.7	31	1,900	329	5
A767MU107M1VLAE029	35	40.2	100	10 x 12.6	29	2500	700	5
A767MU187M1VLAE028	35	40.2	180	10 x 12.6	28	2600	1260	5
A767MU227M1VLAE028	35	40.2	220	10 x 12.6	28	2600	1540	5
A767KN226M1HLAE050	50	57.5	22	8 x 9.7	50	1500	300	5
A767KN336M1HLAE045	50	57.5	33	8 x 9.7	45	1800	330	5
A767KN476M1HLAE029	50	57.5	47	8 x 9.7	29	3300	470	5
A767KN566M1HLAE029	50	57.5	56	8 x 9.7	29	2800	560	5
A767KN226M1JLAE045	63	72	22	8 x 9.7	45	1800	300	5
A767KN336M1JLAE042	63	72	33	8 x 9.7	42	1950	415	5
A767KS476M1JLAE036	63	72	47	8 x 12	36	2200	592	5
A767KN226M1KLAE045	80	92	22	8 x 9.7	45	2100	352	5
A767MU476M1KLAE040	80	92	47	10 x 12.6	40	2500	752	5
A767KS106M2ALAE045	100	115	10	8 x 12	45	1700	300	5
A767MU226M2ALAE038	100	115	22	10 x 12.6	38	2250	440	5



[www.kemet.com/A767](http://www.kemet.com/A767)

## Dimensions – Millimeters



Size Code	D		L		W		H		C		R	P
	Nominal	Tolerance	Nominal	Tolerance	Nominal	Tolerance	Nominal	Tolerance	Nominal	Tolerance	Nominal	Nominal
EB	6.3	±0.5	5.7	±0.3	6.6	±0.2	6.6	±0.2	7.3	±0.2	0.5 – 0.9	2.1
KN	8	±0.5	9.7	±0.3	8.3	±0.2	8.3	±0.2	9.0	±0.2	0.8 – 1.1	3.2
KU	8	±0.5	12.6	±0.3	8.3	±0.2	8.3	±0.2	9.0	±0.2	0.8 – 1.1	3.2
MU	10	±0.5	12.6	±0.3	10.3	±0.2	10.3	±0.2	11.0	±0.2	0.8 – 1.1	4.6

## X-ON Electronics

Largest Supplier of Electrical and Electronic Components

*Click to view similar products for [Capacitor Kits](#) category:*

*Click to view products by [Kemet](#) manufacturer:*

Other Similar products are found below :

[1320838-1](#) [DK0035T](#) [KITMS11111](#) [DK0026T](#) [DK0033T](#) [TS0002](#) [ALU ENG KIT 07](#) [GRM03-KIT-CLASS2-DE](#) [MKV250V-KIT-1-DE](#)  
[MKV250V-KIT-2-DE](#) [744114](#) [GCJ-KIT-X7-DE-A](#) [GJM022-KIT-TTOL-DE](#) [GRM02-KIT-DE](#) [ACCU-P0402KITL1](#) [KITTYPE2100 LF](#)  
[KITMS08051](#) [AY21-KIT-HF](#) [SS016M0047B1F-0407](#) [PPR ENG KIT 04](#) [ALU ENG KIT 02](#) [TAN ENG KIT 34](#) [CER ENG KIT 37](#) [CER ENG](#)  
[KIT 36](#) [ALU ENG KIT 01](#) [VY2-KIT-MS](#) [ACCU-P0402KITL2](#) [TS0003](#) [ACCU-P0201KITL2](#) [FPCAP-SMD-KIT](#) [885070](#) [ALU ENG KIT 03](#)  
[ALU ENG KIT 05](#) [ALU ENG KIT 06](#) [DK0008T](#) [DK0015](#) [DK0036T](#) [DK0037T](#) [DK0081T](#) [DK0060T](#) [ESRD-KIT9](#) [MCF1000VKIT6](#) [MICA-](#)  
[KIT1](#) [MICA-KIT6](#) [MIN300VKIT1](#) [HOTC-KIT-KH](#) [iKIT60MM2V7A2S](#) [S-0402](#) [S-0603](#) [S-0805](#)