

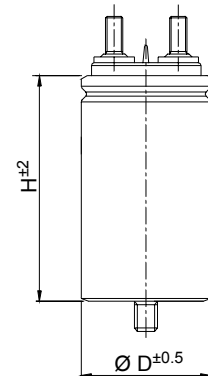
**TECHNICAL DATA**

|   |  |
|---|--|
| General technical data  | VDE 0560 , IEC 071 , EN 61071  |
| Application class ( DIN 40040 )   | GPD / LS   |
| Temperature range ( Case )  | -40 to + 85 °C   |
| Max permissible ambient temperature                                       | +70 °C   |
| Capacitance tolerance code ( 15 <sup>th</sup> digit )                     | J = ± 5% ; K = ± 10%   |
| Test voltage terminal to case U <sub>TT</sub>                             | 1.5 U <sub>RMS</sub> for 60 seconds  |
| Test voltage terminal to case U <sub>TC</sub>                             | 3kV - 50Hz for 60 seconds  |
| Rated insulation voltage U <sub>i</sub>                                   | 700 V - 50 Hz - Insulation group B ( VDE 0110 part 1 )   |
| Permissible relative humidity   | Annual average ≤ 95% on 30 days / year, continuously 100% on other days occasionally 100%. Dewing not admissible |
| IEC climatic category   | 40 / 85 / 21   |
| Degree of protection  | IP00   |
| Capacitance deviation in the operating temperature range of -40 to +85 °C | ±1.5% max on capacitance value measured at +20 °C  |
| Change of capacitance versus operating time                               | -3% after 30.000 hours at U <sub>RMS</sub> or after 100.000 hours at Un  |
| Case components   | Aluminium case plus plastic insulating deck flame retardant execution ( UL class 94 V1 ) .                       |
| Terminals   | Tinned brass fastons or screws ( See figure on top )   |
| Installation  | Whatever Position  |
| Life Expectancy   | ≥ 30.000 hours at U <sub>RMS</sub> ; ≥ 100.000 hours at Un   |
| Failure quota   | 300 / 10 <sup>9</sup> components hour  |

MKP Series  
ALUMINIUM CASE CAPACITORS  
GENERAL PURPOSE APPLICATION  
SCREW TERMINALS

**PEAK VOLTAGE TABLE**

| Un<br>Vdc | U <sub>PK</sub><br>Vdc | U <sub>RMS</sub><br>Vac |
|-----------|------------------------|-------------------------|
| 400       | 600                    | 250                     |
| 600       | 800                    | 330                     |

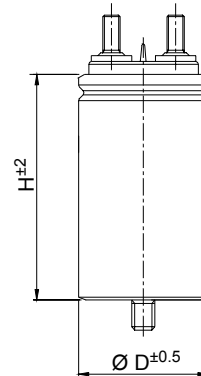


**GENERAL CHARACTERISTICS**

| Code            | C<br>µF | Un<br>Vdc | K<br>°C/W | Tgδ x 10 <sup>-4</sup> |      | ESR<br>Typ.<br>mΩ | dv/dt<br>V/µs | I <sub>RMS</sub><br>A | I <sub>PKR</sub><br>A | Case |     | Approx<br>Weight<br>g |
|-----------------|---------|-----------|-----------|------------------------|------|-------------------|---------------|-----------------------|-----------------------|------|-----|-----------------------|
|                 |         |           |           | Max                    | Typ. |                   |               |                       |                       | D    | H   |                       |
| C44AFFP5150ZA0J | 15      | 400       | 7.8       | 10                     | 5    | 5                 | 30            | 16                    | 450                   | 45   | 80  | 135                   |
| C44AFFP5200ZE0J | 20      | 400       | 6.2       | 10                     | 5    | 5                 | 30            | 18                    | 600                   | 45   | 80  | 135                   |
| C44AFFP5220ZA0J | 22      | 400       | 6.2       | 12                     | 6    | 5                 | 30            | 18                    | 660                   | 45   | 80  | 135                   |
| C44AFFP5250ZA0J | 25      | 400       | 6.2       | 12                     | 7    | 5                 | 30            | 18                    | 750                   | 45   | 80  | 135                   |
| C44AFFP5300ZA0J | 30      | 400       | 3.5       | 20                     | 15   | 6                 | 20            | 22                    | 600                   | 50   | 101 | 200                   |
| C44AFFP5400ZA0J | 40      | 400       | 2.7       | 20                     | 15   | 6                 | 20            | 25                    | 800                   | 50   | 101 | 200                   |
| C44AFFP5500ZE0J | 50      | 400       | 2.6       | 20                     | 15   | 6                 | 20            | 25                    | 1000                  | 50   | 101 | 200                   |
| C44AFGP5600ZA0J | 60      | 400       | 2.6       | 25                     | 15   | 6                 | 20            | 25                    | 1200                  | 60   | 101 | 240                   |
| C44AFGP5750ZA0J | 75      | 400       | 3.2       | 30                     | 20   | 5                 | 20            | 30                    | 1500                  | 60   | 101 | 240                   |
| C44AFGP6100ZG0J | 100     | 400       | 4.0       | 30                     | 20   | 4                 | 15            | 32                    | 1500                  | 60   | 138 | 315                   |
| C44AFGP6130ZA0J | 130     | 400       | 4.0       | 30                     | 20   | 4                 | 15            | 32                    | 2000                  | 65   | 138 | 360                   |
| C44AFGP6150ZA0J | 150     | 400       | 4.0       | 40                     | 30   | 4                 | 15            | 32                    | 2250                  | 70   | 138 | 530                   |
| C44AFGP6200ZE0J | 200     | 400       | 4.0       | 40                     | 30   | 4                 | 10            | 32                    | 2000                  | 76   | 138 | 740                   |
| C44AFGR6250ZA0J | 250     | 400       | 4.0       | 40                     | 30   | 4                 | 10            | 32                    | 2500                  | 85   | 150 | 900                   |
| C44AFGR6300ZA0J | 300     | 400       | 1.25      | 50                     | 40   | 5                 | 20            | 50                    | 6000                  | 85   | 185 | 1080                  |
| C44AFGR6330ZA0J | 330     | 400       | 1.25      | 50                     | 40   | 5                 | 20            | 50                    | 6000                  | 85   | 185 | 1150                  |
| C44AHFP5100ZA0J | 10      | 600       | 7.8       | 10                     | 5    | 5                 | 40            | 16                    | 400                   | 45   | 80  | 135                   |
| C44AHFP5150ZA0J | 15      | 600       | 7.7       | 10                     | 5    | 4                 | 40            | 18                    | 600                   | 45   | 105 | 160                   |
| C44AHFP5200ZB0J | 20      | 600       | 5.2       | 15                     | 6    | 4                 | 30            | 22                    | 600                   | 45   | 101 | 160                   |
| C44AHFP5220ZA0J | 22      | 600       | 5.3       | 15                     | 6    | 3                 | 30            | 25                    | 660                   | 50   | 101 | 200                   |
| C44AHFP5250ZB0J | 25      | 600       | 3.5       | 20                     | 15   | 6                 | 20            | 22                    | 600                   | 50   | 101 | 200                   |
| C44AHFP5300ZC0J | 30      | 600       | 10.3      | 15                     | 7    | 2                 | 30            | 25                    | 900                   | 50   | 101 | 200                   |
| C44AHGP5330ZA0J | 33      | 600       | 8.0       | 15                     | 7    | 2                 | 30            | 25                    | 990                   | 55   | 101 | 235                   |
| C44AHGP5400ZB0J | 40      | 600       | 8.0       | 10                     | 6    | 2                 | 30            | 25                    | 1200                  | 60   | 101 | 240                   |
| C44AHGP5500ZG0J | 50      | 600       | 3.2       | 15                     | 10   | 5                 | 20            | 25                    | 1000                  | 55   | 138 | 300                   |
| C44AHGP5600ZB0J | 60      | 600       | 3.1       | 15                     | 8    | 5                 | 20            | 32                    | 1200                  | 60   | 138 | 315                   |
| C44AHGP5700ZA0J | 70      | 600       | 3.2       | 25                     | 15   | 5                 | 20            | 32                    | 1400                  | 65   | 138 | 360                   |
| C44AHGP5750ZA0J | 75      | 600       | 3.2       | 25                     | 15   | 5                 | 20            | 32                    | 1500                  | 65   | 138 | 360                   |
| C44AHGP5800ZA0J | 80      | 600       | 3.2       | 25                     | 15   | 5                 | 20            | 32                    | 1600                  | 65   | 135 | 530                   |
| C44AHGP6100ZA0J | 100     | 600       | 3.2       | 25                     | 15   | 5                 | 20            | 32                    | 2000                  | 76   | 135 | 625                   |
| C44AHGR6100ZB0J | 100     | 600       | 1.25      | 15                     | 10   | 5                 | 30            | 50                    | 3000                  | 85   | 138 | 770                   |

**PEAK VOLTAGE TABLE**

| Un<br>Vdc | U <sub>PK</sub><br>Vdc | U <sub>RMS</sub><br>Vac |
|-----------|------------------------|-------------------------|
| 700       | 900                    | 400                     |
| 850       | 1000                   | 450                     |



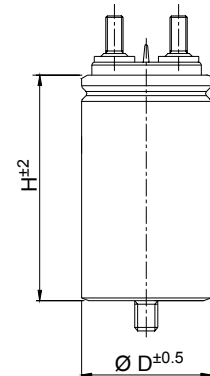
**GENERAL CHARACTERISTICS**

| Code            | C<br>µF | Un<br>Vdc | K<br>°C/W | Tgδ x 10 <sup>-4</sup> |      | ESR<br>Typ.<br>mΩ | dv/dt<br>V/µs | I <sub>RMS</sub><br>A | I <sub>PKR</sub><br>A | Case |     | Approx<br>Weight<br>g |
|-----------------|---------|-----------|-----------|------------------------|------|-------------------|---------------|-----------------------|-----------------------|------|-----|-----------------------|
|                 |         |           |           | Max                    | Typ. |                   |               |                       |                       | D    | H   |                       |
| C44AJFP4500ZA0J | 5       | 700       | 13.0      | 8                      | 2    | 3                 | 50            | 16                    | 250                   | 45   | 80  | 135                   |
| C44AJFP4600ZA0J | 6       | 700       | 13.0      | 8                      | 2    | 3                 | 50            | 16                    | 300                   | 45   | 80  | 135                   |
| C44AJFP4750ZA0J | 7.5     | 700       | 10.3      | 10                     | 3    | 3                 | 50            | 18                    | 375                   | 45   | 80  | 135                   |
| C44AJFP5100ZA0J | 10      | 700       | 10.0      | 10                     | 3    | 3                 | 50            | 18                    | 500                   | 50   | 101 | 200                   |
| C44AJFP5150ZB0J | 15      | 700       | 5.3       | 15                     | 6    | 3                 | 40            | 25                    | 600                   | 50   | 101 | 200                   |
| C44AJFP5200ZD0J | 20      | 700       | 5.3       | 15                     | 10   | 3                 | 40            | 25                    | 800                   | 50   | 101 | 200                   |
| C44AJGP5220ZA0J | 22      | 700       | 5.3       | 15                     | 10   | 3                 | 40            | 25                    | 880                   | 55   | 101 | 235                   |
| C44AJGP5250ZA0J | 25      | 700       | 5.3       | 15                     | 10   | 3                 | 40            | 25                    | 1000                  | 60   | 101 | 240                   |
| C44AJGP5300ZB0J | 30      | 700       | 5.3       | 15                     | 12   | 3                 | 30            | 25                    | 900                   | 60   | 138 | 310                   |
| C44AJGP5330ZA0J | 33      | 700       | 5.3       | 15                     | 10   | 3                 | 35            | 25                    | 990                   | 60   | 138 | 310                   |
| C44AJGP5400ZA0J | 40      | 700       | 4.0       | 25                     | 15   | 4                 | 35            | 32                    | 1200                  | 65   | 138 | 360                   |
| C44AJGP5500ZA0J | 50      | 700       | 4.0       | 25                     | 15   | 4                 | 35            | 32                    | 1500                  | 65   | 138 | 360                   |
| C44AJGP5600ZA0J | 60      | 700       | 4.0       | 25                     | 15   | 4                 | 30            | 32                    | 1800                  | 76   | 138 | 625                   |
| C44AJGP5700ZA0J | 70      | 700       | 4.0       | 25                     | 15   | 4                 | 30            | 32                    | 2100                  | 76   | 138 | 625                   |
| C44AJGR5750ZA0J | 75      | 700       | 4.0       | 25                     | 15   | 4                 | 30            | 32                    | 2250                  | 85   | 137 | 770                   |
| C44AJGR6100ZA0J | 100     | 700       | 2.0       | 15                     | 10   | 3                 | 40            | 50                    | 4000                  | 85   | 185 | 1150                  |
| C44AMFP4300ZA0J | 3       | 850       | 7.8       | 10                     | 5    | 5                 | 60            | 16                    | 180                   | 45   | 80  | 135                   |
| C44AMFP4500ZA0J | 5       | 850       | 7.8       | 10                     | 5    | 5                 | 60            | 16                    | 300                   | 45   | 80  | 135                   |
| C44AMFP4600ZA0J | 6       | 850       | 6.2       | 10                     | 5    | 5                 | 60            | 18                    | 360                   | 45   | 80  | 135                   |
| C44AMFP4800ZA0J | 8       | 850       | 4.1       | 10                     | 6    | 5                 | 50            | 22                    | 400                   | 45   | 105 | 200                   |
| C44AMFP5100ZD0J | 10      | 850       | 3.2       | 10                     | 6    | 5                 | 50            | 25                    | 500                   | 50   | 101 | 200                   |
| C44AMGP5150ZA0J | 15      | 850       | 2.0       | 10                     | 7    | 8                 | 50            | 25                    | 750                   | 60   | 101 | 240                   |
| C44AMGP5200ZA0J | 20      | 850       | 2.6       | 10                     | 7    | 6                 | 50            | 25                    | 1000                  | 65   | 101 | 310                   |
| C44AMGP5220ZA0J | 22      | 850       | 1.5       | 12                     | 5    | 4                 | 40            | 25                    | 880                   | 55   | 138 | 300                   |
| C44AMGP5250ZA0J | 25      | 850       | 3.2       | 15                     | 7    | 5                 | 40            | 25                    | 1000                  | 55   | 138 | 300                   |
| C44AMGP5300ZA0J | 30      | 850       | 3.2       | 15                     | 8    | 5                 | 40            | 32                    | 1200                  | 65   | 138 | 380                   |
| C44AMGP5330ZA0J | 33      | 850       | 3.2       | 15                     | 8    | 5                 | 40            | 32                    | 1320                  | 65   | 138 | 360                   |
| C44AMGP5350ZA0J | 35      | 850       | 3.2       | 15                     | 10   | 5                 | 40            | 32                    | 1400                  | 65   | 138 | 360                   |
| C44AMGP5400ZB0J | 40      | 850       | 3.2       | 15                     | 10   | 5                 | 40            | 32                    | 1600                  | 76   | 138 | 580                   |
| C44AMGP5500ZA0J | 50      | 850       | 3.2       | 20                     | 10   | 5                 | 40            | 32                    | 2000                  | 76   | 138 | 625                   |
| C44AMGR5600ZA0J | 60      | 850       | 3.2       | 20                     | 10   | 5                 | 40            | 32                    | 2400                  | 85   | 137 | 770                   |

MKP Series  
ALUMINIUM CASE CAPACITORS  
GENERAL PURPOSE APPLICATION  
SCREW TERMINALS

**PEAK VOLTAGE TABLE**

| Un<br>Vdc | U <sub>PK</sub><br>Vdc | U <sub>RMS</sub><br>Vac |
|-----------|------------------------|-------------------------|
| 1200      | 1600                   | 500                     |
| 1500      | 2000                   | 630                     |



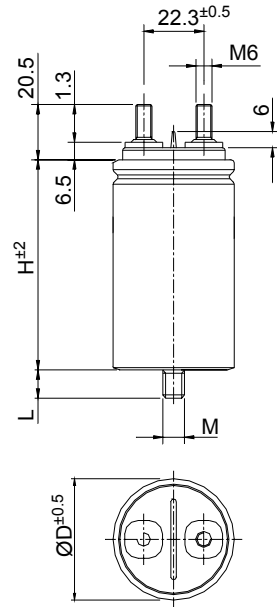
**GENERAL CHARACTERISTICS**

| Codes           | C<br>µF | Un<br>Vdc | K<br>°C/W | Tgδ x 10 <sup>-4</sup> |      | ESR<br>Typ.<br>mΩ | dv/dt<br>V/µs | I <sub>RMS</sub><br>A | I <sub>PKR</sub><br>A | Case |     | Approx<br>Weight<br>g |
|-----------------|---------|-----------|-----------|------------------------|------|-------------------|---------------|-----------------------|-----------------------|------|-----|-----------------------|
|                 |         |           |           | Max.                   | Typ. |                   |               |                       |                       | D    | H   |                       |
| C44APFP4100ZA0J | 1       | 1200      | 17.7      | 5                      | 2.5  | 2.5               | 300           | 15                    | 300                   | 45   | 80  | 135                   |
| C44APFP4150ZA0J | 1.5     | 1200      | 17.7      | 5                      | 2.5  | 2.5               | 300           | 15                    | 450                   | 45   | 80  | 135                   |
| C44APFP4200ZD0J | 2       | 1200      | 17.7      | 5                      | 2.5  | 2.5               | 300           | 15                    | 600                   | 45   | 80  | 135                   |
| C44APFP4220ZA0J | 2.2     | 1200      | 19.5      | 5                      | 2.5  | 2                 | 300           | 16                    | 660                   | 45   | 80  | 135                   |
| C44APFP4250ZA0J | 2.5     | 1200      | 15.4      | 5                      | 2.5  | 2                 | 300           | 18                    | 750                   | 45   | 80  | 135                   |
| C44APFP4300ZB0J | 3       | 1200      | 12.5      | 5                      | 2.5  | 2                 | 300           | 20                    | 900                   | 50   | 76  | 150                   |
| C44APFP4400ZA0J | 4       | 1200      | 12.5      | 5                      | 2.5  | 2                 | 300           | 20                    | 1200                  | 50   | 101 | 200                   |
| C44APFP4500ZB0J | 5       | 1200      | 10.3      | 5                      | 2.5  | 2                 | 300           | 22                    | 1500                  | 50   | 101 | 200                   |
| C44APFP4500ZA0J | 5       | 1200      | 3.3       | 5                      | 2.5  | 2                 | 400           | 40                    | 2000                  | 50   | 138 | 280                   |
| C44APGP4600ZB0J | 6       | 1200      | 8.0       | 5                      | 2.5  | 2                 | 300           | 25                    | 1800                  | 55   | 101 | 235                   |
| C44APGP4680ZB0J | 6.8     | 1200      | 8.0       | 5                      | 2.5  | 2                 | 300           | 25                    | 2040                  | 60   | 101 | 240                   |
| C44APGP4750ZF0J | 7.5     | 1200      | 10.6      | 5                      | 2.8  | 1.5               | 300           | 25                    | 2250                  | 50   | 138 | 280                   |
| C44APGP4800ZE0J | 8       | 1200      | 4.5       | 5                      | 2.8  | 3.5               | 250           | 25                    | 2000                  | 55   | 138 | 300                   |
| C44APGP5100ZE0J | 10      | 1200      | 5.3       | 5                      | 2.8  | 3                 | 250           | 25                    | 2500                  | 55   | 138 | 300                   |
| C44APGP5100ZF0J | 10      | 1200      | 3.2       | 5                      | 2.5  | 2                 | 300           | 50                    | 3000                  | 60   | 138 | 310                   |
| C44APGP5100ZH0J | 10      | 1200      | 1.4       | 5                      | 2.5  | 2                 | 350           | 60                    | 3500                  | 65   | 158 | 350                   |
| C44APGP5125ZA0J | 12.5    | 1200      | 3.2       | 5                      | 2.5  | 2                 | 300           | 50                    | 3750                  | 76   | 138 | 625                   |
| C44APGP5150ZB0J | 15      | 1200      | 6.4       | 5                      | 2.8  | 2.5               | 250           | 32                    | 3750                  | 76   | 138 | 625                   |
| C44APGR5200ZB0J | 20      | 1200      | 6.4       | 5                      | 2.8  | 2.5               | 250           | 32                    | 5000                  | 85   | 137 | 770                   |
| C44APGR5220ZA0J | 22      | 1200      | 1.1       | 5                      | 2.5  | 2.5               | 300           | 50                    | 6600                  | 76   | 200 | 940                   |
| C44ASFP4100ZA0J | 1       | 1500      | 17.7      | 5                      | 2.5  | 2.5               | 400           | 15                    | 700                   | 45   | 80  | 135                   |
| C44ASFP4200ZB0J | 2       | 1500      | 15.6      | 5                      | 2.8  | 2.5               | 400           | 16                    | 800                   | 50   | 76  | 150                   |
| C44ASFP4300ZA0J | 3       | 1500      | 10.3      | 5                      | 2.8  | 2                 | 400           | 22                    | 1200                  | 50   | 101 | 200                   |
| C44ASGP4400ZA0J | 4       | 1500      | 8.0       | 5                      | 2.8  | 2                 | 400           | 25                    | 1600                  | 60   | 101 | 265                   |
| C44ASGP4500ZB0J | 5       | 1500      | 8.0       | 5                      | 2.8  | 2                 | 400           | 25                    | 2000                  | 65   | 101 | 350                   |
| C44ASGP4750ZA0J | 7.5     | 1500      | 5.3       | 5                      | 2.8  | 3                 | 300           | 25                    | 2250                  | 65   | 138 | 380                   |
| C44ASGP5100ZA0J | 10      | 1500      | 5.3       | 5                      | 2.8  | 3                 | 300           | 32                    | 3000                  | 70   | 138 | 530                   |
| C44ASGR5120ZA0J | 12      | 1500      | 5.3       | 5                      | 2.8  | 3                 | 300           | 32                    | 3600                  | 85   | 137 | 770                   |
| C44ASGR5150ZA0J | 15      | 1500      | 5.3       | 5                      | 2.8  | 3                 | 300           | 32                    | 4500                  | 85   | 137 | 770                   |

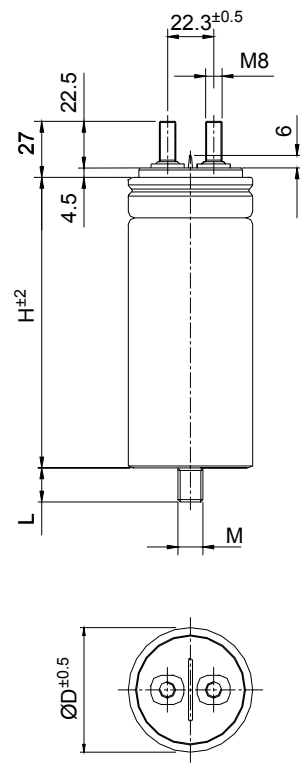
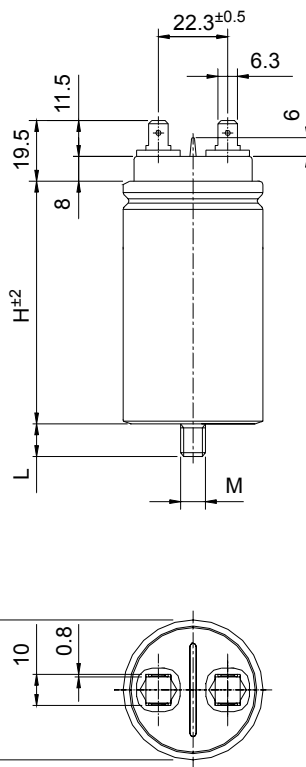
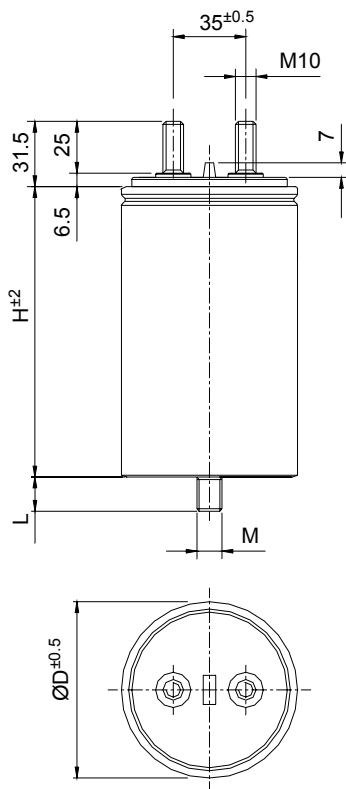
**DRAWINGS**

**MECHANICAL CHARACTERISTICS**

| Case | Brass screw terminals |                   |                  | Bolt |      |                   |
|------|-----------------------|-------------------|------------------|------|------|-------------------|
|      | Driving Torque Nm     | Creepage Distance | Clearance In air | M    | H    | Driving Torque Nm |
| 45   | 4                     | 14                | 10               | M 8  | 10   | 6                 |
| 50   | 4                     | 14                | 10               | M 8  | 10   | 6                 |
| 55   | 4                     | 16                | 10               | M 12 | 12.5 | 10                |
| 60   | 4                     | 18                | 10               | M 12 | 12.5 | 10                |
| 65   | 4                     | 20                | 10               | M 12 | 12.5 | 10                |
| 70   | 4                     | 22                | 10               | M 12 | 12.5 | 10                |
| 85   | 7                     | 22                | 10               | M 12 | 12.5 | 10                |



**TERMINATIONS**



Statements of suitability for certain applications are based on our knowledge of typical operating conditions for such applications, but are not intended to constitute – and we specifically disclaim – any warranty concerning suitability for a specific customer application or use. This Information is intended for use only by customers who have the requisite experience and capability to determine the correct products for their application. Any technical advice inferred from this Information or otherwise provided by us with reference to the use of our products is given gratis, and we assume no obligation or liability for the advice given or results obtained.

## X-ON Electronics

Largest Supplier of Electrical and Electronic Components

*Click to view similar products for [Film Capacitors](#) category:*

*Click to view products by [Kemet](#) manufacturer:*

Other Similar products are found below :

[F339X134748MIP2T0](#) [F450KG153J250ALH0J](#) [750-1018](#) [FKP1-1500160010P15](#) [FKP1R031007D00JYSD](#) [FKP1R031507E00JYSD](#)  
[FKP1U024707E00KYSD](#) [82DC4100CK60J](#) [82EC1100DQ50K](#) [PFR5101J100J11L16.5TA18](#) [PME261JB5220KR19T0](#) [A451GK223M040A](#)  
[A561ED221M450A](#) [QXJ2E474KTPT](#) [QXL2B333KTPT](#) [R49AN347000A1K](#) [EEC2G505HQA406](#) [B25668A6676A375](#) [B25673A4282E140](#)  
[BFC233868148](#) [BFC2370GC222](#) [C3B2AD44400B20K](#) [C4ASWBU3220A3EK](#) [CB027C0473J--](#) [CB177I0184J--](#) [CB182K0184J--](#) [23PW210](#)  
[950CQW5H-F](#) [SBDC3470AA10J](#) [SCD105K122A3-22](#) [2N3155](#) [A571EH331M450A](#) [FKP1-2202KV5P15](#) [FKS3-680040010P10](#)  
[QXL2E473KTPT](#) [445450-1](#) [B25669A3996J375](#) [46KI322000M1M](#) [46KR415050M1K](#) [4BSNBX4100ZBFJ](#) [MKP383510063JKP2T0](#)  
[MKPY2-.02230020P15](#) [MKT 1813-368-015](#) [4055292001](#) [46KN410000N1K](#) [EEC2E106HQA405](#) [EEC2G205HQA402](#) [EEC2G805HQA415](#)  
[P409CP224M250AH470](#) [82EC2150DQ50K](#)