

Stud or push fit mount

A range of compact, plastic case suppression filters offering high levels of performance to size ratio. Ideally suited for consumer goods, domestic appliances, vending machines and business equipment.

- Current ratings from 10A to 16A
- Ten performance variants available
- Compact, low-cost package
- Fast-on terminations
- Push-fit mounting option for instant insertion

Mechanical Specifications

Manufacture: self-extinguishing plastic case UL-94V2;
 deck UL-94V0;
 plastic fixing studs M8x10;
 internal components sealed with UL-94V2
 self-extinguishing resin;
 washer and nut separately packed.

Connections: 5 faston 6.3 x 0.8mm.

Available options: 2 additional wire leads. 1.5mm² section.
 push-fit stud and spring washer

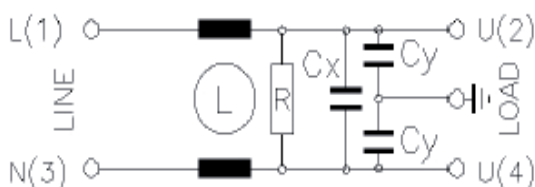
Filter Range

Code	I _R (A)	L (mH)	C _x (μF)	C _y (pF)	I _L (mA)	R (MΩ)	DxH (mm)
FNC1005154472-	10	0.5	0.15	2 x 4700	2 x 0.43	1	40 x 40
FNC1005154103-	10	0.5	0.15	2 x 10000	2 x 0.91	1	40 x 40
FNC1005474253-	10	0.5	0.47	2 x 25000	2 x 2.3	0.68	40 x 40
FNC1005474273-	10	0.5	0.47	2 x 27000	2 x 2.5	0.68	40 x 40
FNC1610254273-	16	1	0.25	2 x 27000	2 x 2.5	1	40 x 50
FNC1610474472-	16	1	0.47	2 x 4700	2 x 0.43	0.68	40 x 50
FNC1610474103-	16	1	0.47	2 x 10000	2 x 0.91	0.68	40 x 50
FNC1610474253-	16	1	0.47	2 x 25000	2 x 2.3	0.68	40 x 50
FNC1610474273-	16	1	0.47	2 x 27000	2 x 2.5	0.68	40 x 50
FNC1610684273-	16	1	0.68	2 x 27000	2 x 2.5	0.47	40 x 50

A = Stud mounting
 P = Push-fit mounting

* other variants on request

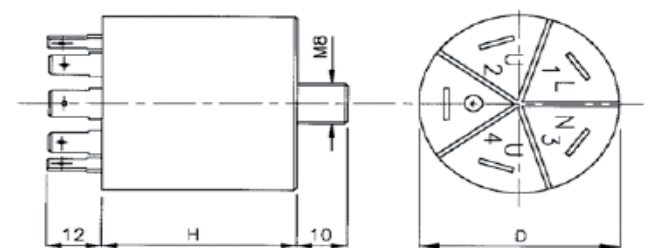
Circuit diagram



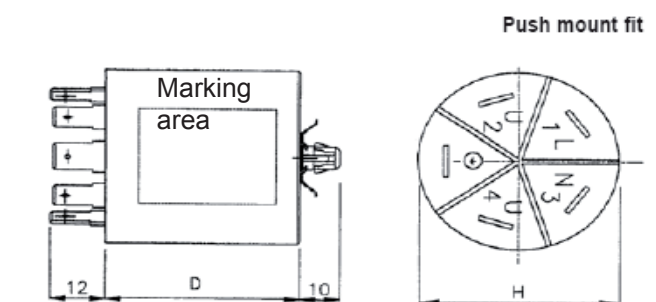
Electrical Specifications

Rated voltage (V_R): max 275V, 50/60Hz
 Rated current (I_R): referred to room temperature = 40°C
 Leakage current (I_L): at 220V, 50Hz, max value
 Voltage test (2 s.): line to ground 3000Vdc or 1800Vac
 line to line 1700Vdc
 Climatic category: HMF (25/100/21);
 Temperature range: -25°C to +100°C

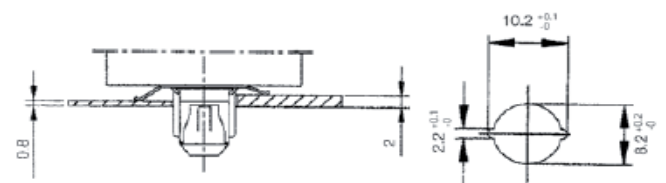
Dimensions (mm) and connections



Stud mount



Push mount fit



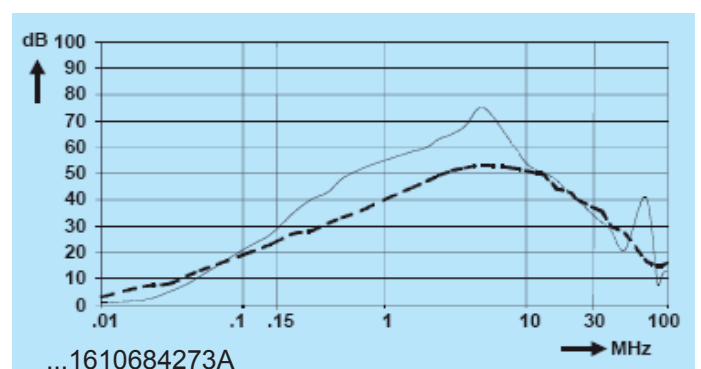
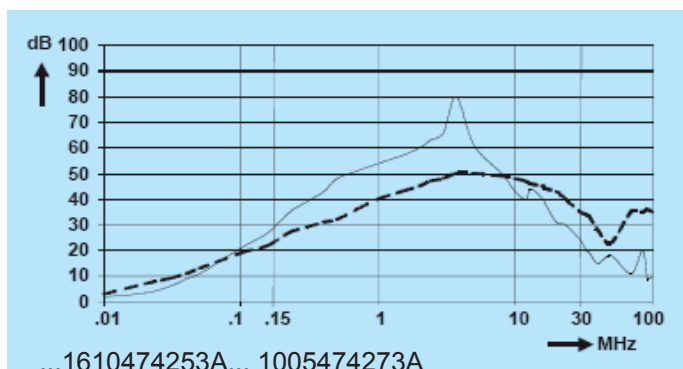
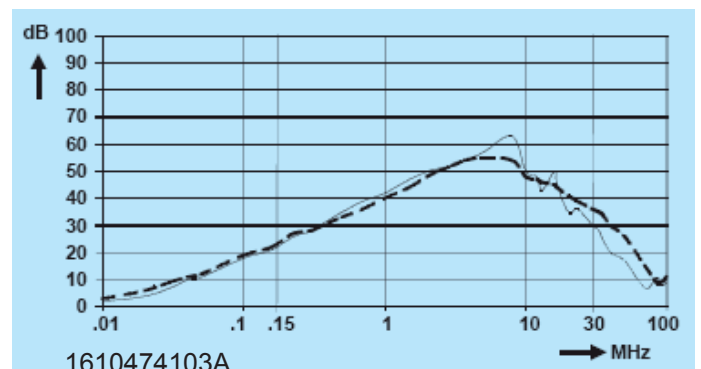
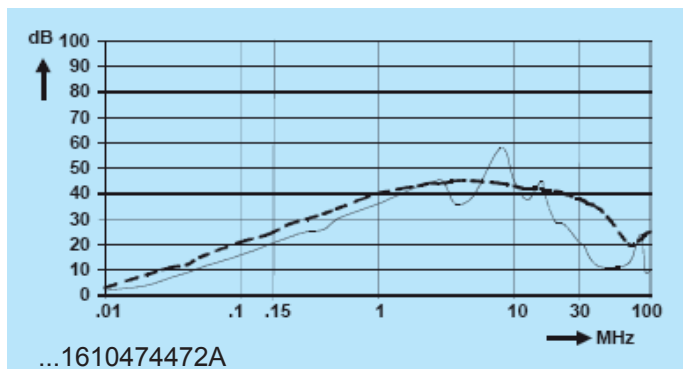
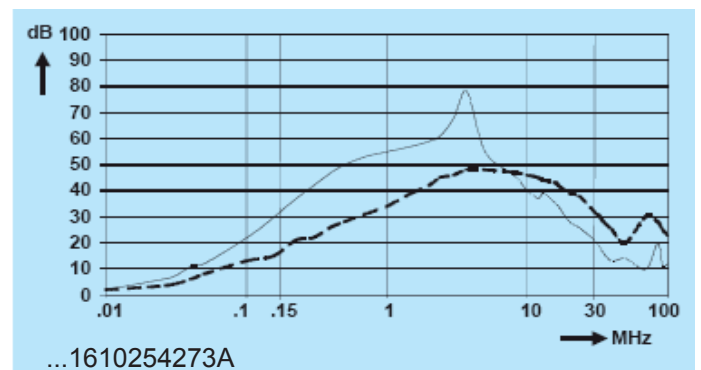
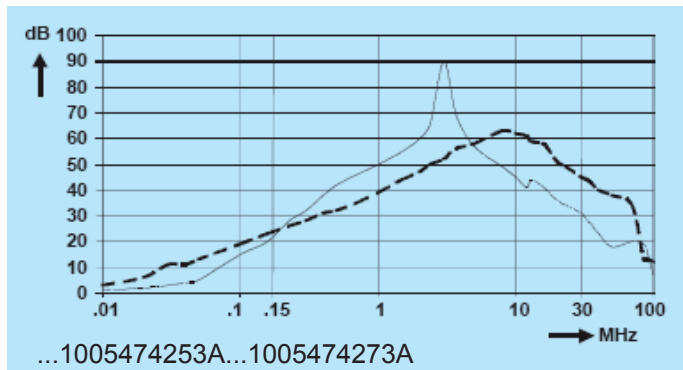
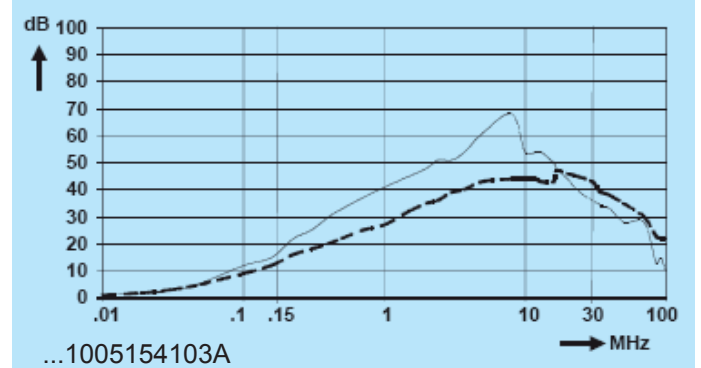
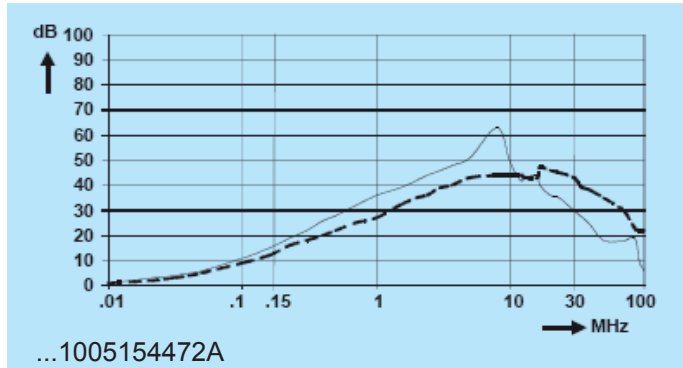
Nominal panel thickness 0,8 to 2mm

Mounting hole details

Approvals



Insertion loss (typical): — Asymmetrical (line to ground) - - - Symmetrical (line to line)



X-ON Electronics

Largest Supplier of Electrical and Electronic Components

Click to view similar products for [Power Line Filters](#) category:

Click to view products by [Kemet](#) manufacturer:

Other Similar products are found below :

[6609019-3](#) [6609026-5](#) [6609030-6](#) [6609973-2](#) [D30A](#) [7-1609090-5](#) [F2810](#) [F4456A](#) [F7382Z](#) [F7863Z](#) [FAHAV3100ZC000](#) [806276](#) [FN2020B-1-06](#) [FN2080B-10-06](#) [FN2410H-32-33](#) [FP144](#) [FS4153-20-06](#) [FS4353-500-99](#) [12-MMB-030-11-D](#) [DB4-393](#) [15811T200](#) [20B1](#) [LC630](#) [2B1](#) [1609080-2](#) [1609993-8](#) [1-6609070-1](#) [F1100AA02](#) [F1150CC10](#) [F1500CA10](#) [F1500CA15](#) [F4041Z](#) [F7585E](#) [1B1](#) [FN2070A-16-06](#) [FN2090A-20-06](#) [FN2090B-12-06](#) [FN2090Z-1-06](#) [FN2410H-25-33](#) [FN2410H-60-34](#) [FN2410H-8-44](#) [FN2412H-8-44](#) [FN323B-6-01](#) [FN3258H-130-35](#) [FN610R-3-06](#) [20EHQ7](#) [20EHZ7](#) [20K1](#) [30B6](#) [3K1](#)