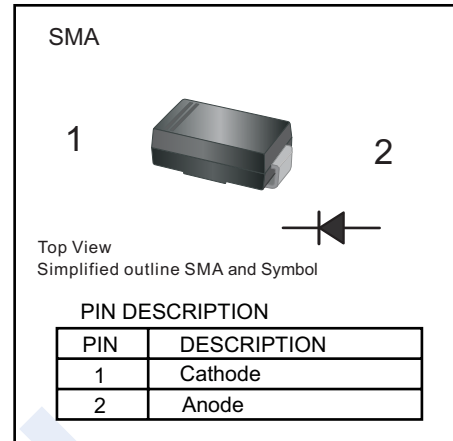


Fast Recovery Diodes

ES1A ~ ES1J

■ Features

- Glass Passivated Die Construction
- Ideally Suited for Automatic Assembly
- Low Forward Voltage Drop, High Efficiency
- Low Power Loss
- Super-Fast Recovery Time



■ Absolute Maximum Ratings Ta = 25°C

Parameter	Symbol	ES1A	ES1B	ES1C	ES1D	ES1E	ES1G	ES1J	Unit	
Repetitive Peak Reverse Voltage	VRRM								V	
Working Peak Reverse Voltage	VRWM	50	100	150	200	300	400	600		
Maximum DC Blocking Voltage	VDC									
RMS Reverse Voltage	VR(RMS)	35	70	105	140	210	280	420		
Forward Voltage @ IF=1A	VF	0.95			1.25		1.7			
Average Rectified Output Current TL=120°C	Io	1								A
Peak Forward Surge Current @ 8.3ms	IFSM	30								
Maximum DC Reverse Current Ta=25°C Ta=100°C	IR	5								μA
		500								
Reverse Recovery Time (Note.1)	trr	35								ns
Typical Junction Capacitance (Note.2)	Cj	10								pF
Thermal Resistance.Junction- to-Lead	RthJL	35								°C/W
Junction Temperature	Tj	150								°C
Storage Temperature	Tstg	-65 to 150								

Note.1: Measured with IF= 0.5A, IR = 1A, Irr = 0.25A. See figure 5.

Note.2: Measured at 1 MHz and Applied VR=4V

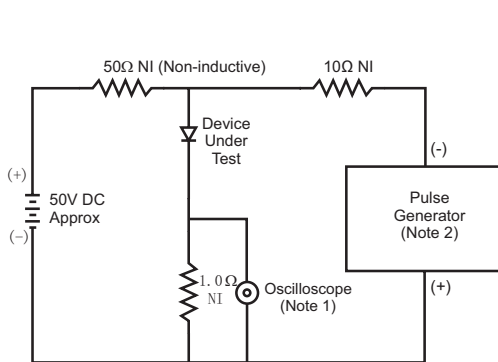
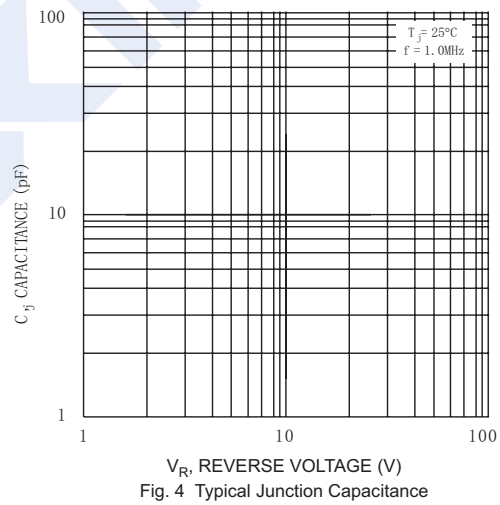
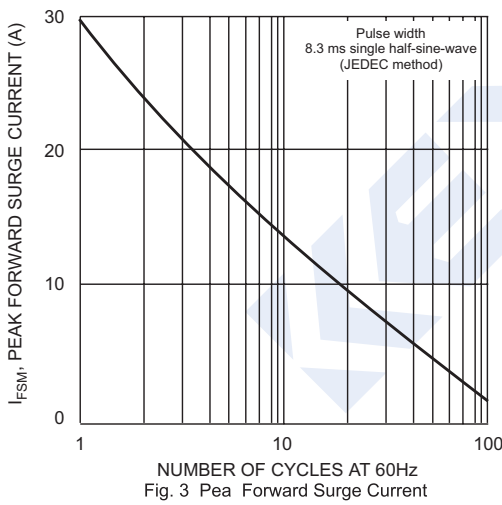
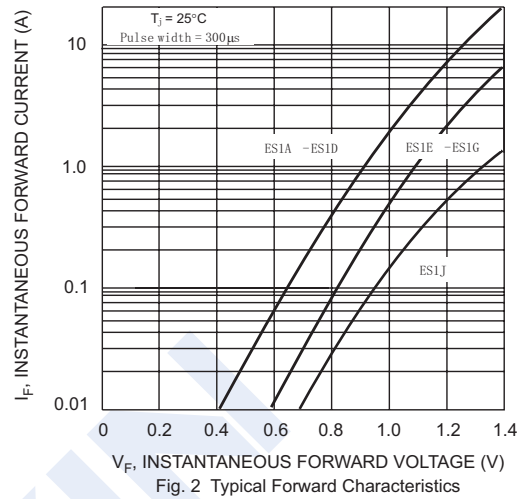
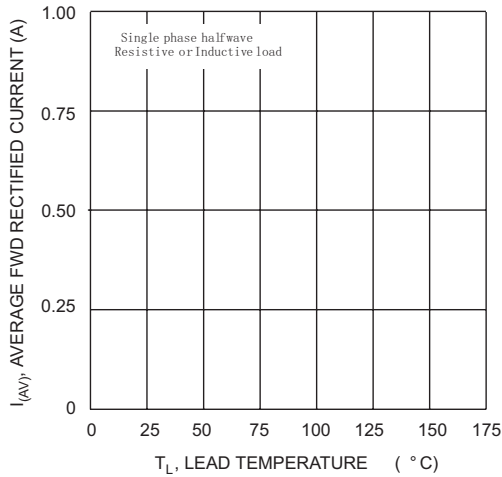
■ Marking

NO.	ES1A	ES1B	ES1C	ES1D	ES1E	ES1G	ES1J
Marking	ES1A	ES1B	ES1C	ES1D	ES1E	ES1G	ES1J

Fast Recovery Diodes

ES1A ~ ES1J

■ Typical Characteristics



- Notes:
1. Rise Time = 7.0ns max. Input Impedance = 1.0MΩ, 22pF.
 2. Rise Time = 10ns max. Input Impedance = 50Ω.

Fig. 5 Reverse Recovery Time Characteristic and Test Circuit

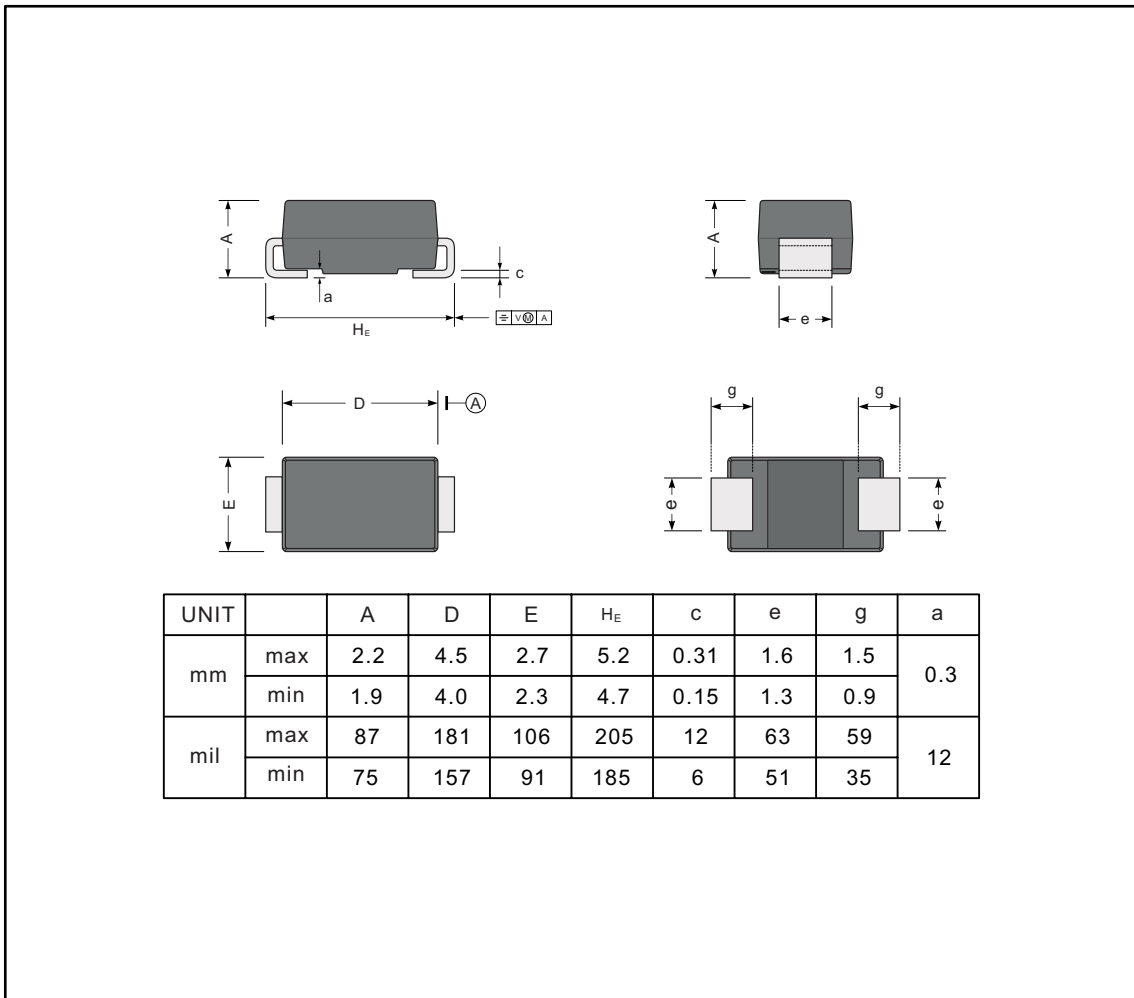
Fast Recovery Diodes

ES1A ~ ES1J

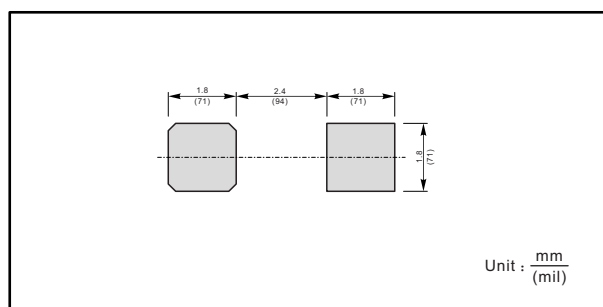
■ Package Outline Dimensions

Plastic surface mounted package; 2 leads

SMA



■ The recommended mounting pad size



X-ON Electronics

Largest Supplier of Electrical and Electronic Components

Click to view similar products for [Rectifiers](#) category:

Click to view products by [KEXIN](#) manufacturer:

Other Similar products are found below :

[D91A](#) [DA24F4100L](#) [DD89N1600K-A](#) [DD89N16K-K](#) [RL252-TP](#) [DLA11C-TR-E](#) [DSA17G](#) [1N4005-TR](#) [BAV199-TP](#) [UFS120Je3/TR13](#)
[JANS1N6640US](#) [VS-80-1293](#) [DD89N16K](#) [DD89N16K-A](#) [481235F](#) [DSP10G-TR-E](#) [067907F](#) [MS306](#) [ND104N08K](#) [SPA2003-B-D-A01](#) [VS-](#)
[80-6193](#) [VS-66-9903](#) [VGF0136AB](#) [US2JFL-TP](#) [UFS105Je3/TR13](#) [A1N5404G-G](#) [ACGRA4007-HF](#) [ACGRB207-HF](#) [RF301B2STL](#)
[RF501B2STL](#) [UES1306](#) [UES1302](#) [BAV199E6433HTMA1](#) [ACGRC307-HF](#) [ACEFC304-HF](#) [JANTXV1N5660A](#) [UES1106](#) [GS2K-LTP](#)
[D126A45C](#) [D251N08B](#) [SCHJ22.5K](#) [SM100](#) [SCPA2](#) [SCH10000](#) [SDHD5K](#) [STTH20P035FP](#) [VS-8EWS12S-M3](#) [VS-12FL100S10](#)
[ACGRA4001-HF](#) [MUR420GP-TP](#)