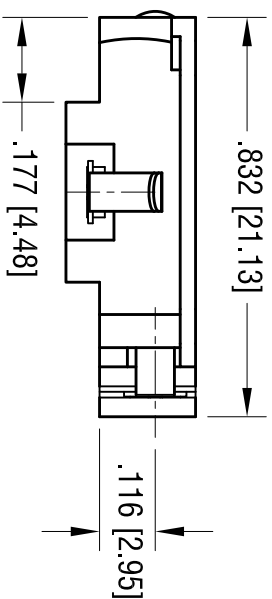
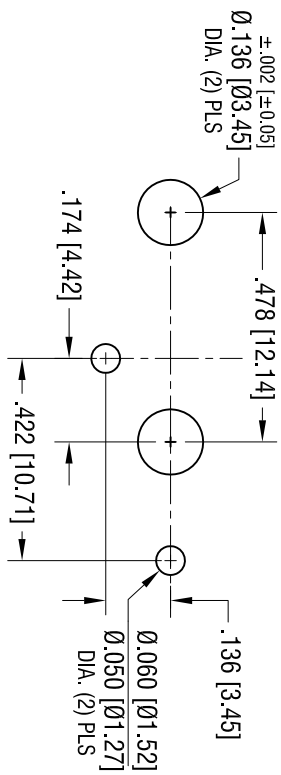
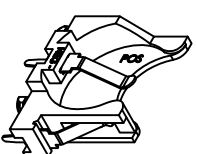
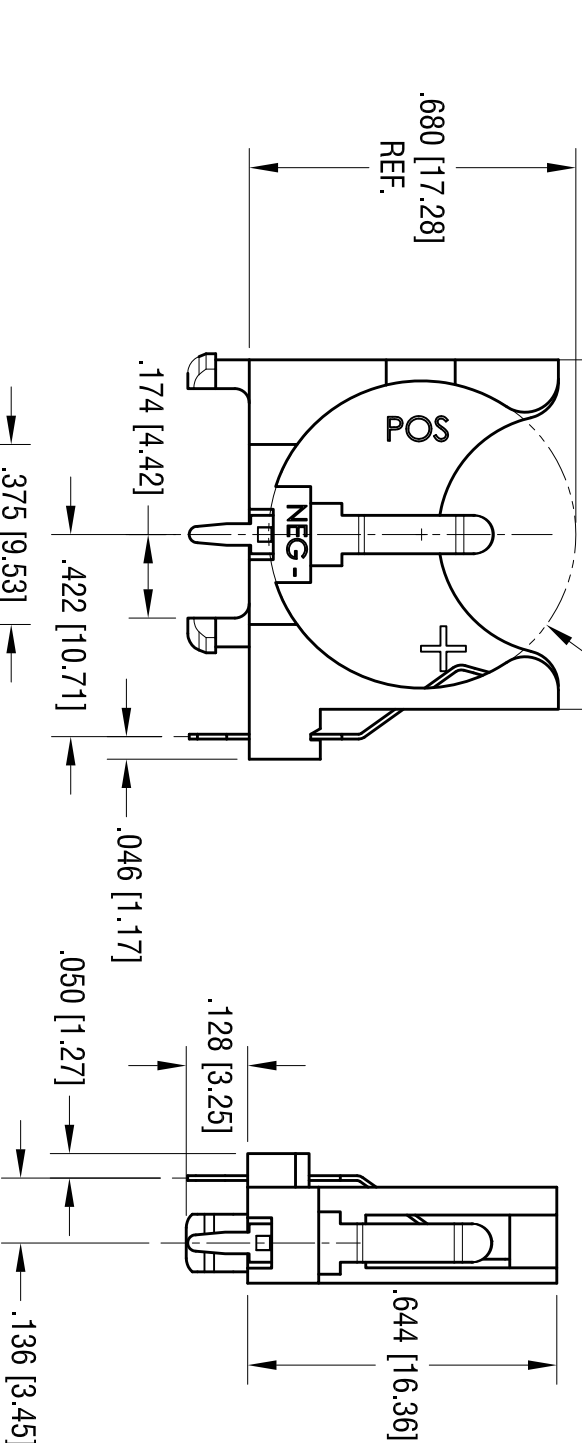
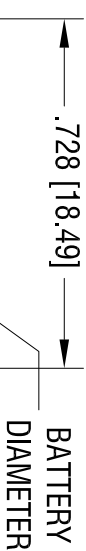


**MOUNTING LAYOUT**

TOLERANCE:  $\pm 0.005$  [ $\pm 0.13$ ] UNLESS OTHERWISE SPECIFIED.



| DATE     | DESCRIPTION  | REV. |
|----------|--|------|
| 1.20.11  | CHANGE AS PER ECN 11-004                                   | A    |
| 4.14.11  | CHANGE AS PER ECN 11-053                                   | B    |
| 4.19.12  | CHANGE AS PER ECN 12-052                                   | C    |
| 4.23.12  | CHANGE AS PER ECN 12-055                                   | D    |
| 12.19.17 | CHANGE AS PER ECN 17-079<br>CONTACT PLATING WAS TIN NICKEL | E    |



**ACTUAL SIZE**

- NOTES:
1. BASE:  
MATEL - PBT (UL 94V-0) BLACK
- CONTACTS:  
MATEL - .010 [0.25] THK SPRING STEEL  
HEAT TREAT TO SPRING TEMPER.  
FINISH - NICKEL PLATE.

THIS DOCUMENT IS THE PROPERTY OF KEYSTONE ELECTRONICS CORP. AND SHALL NOT BE REPRODUCED, DISTRIBUTED OR USED AS A BASIS FOR MANUFACTURE WITHOUT PRIOR WRITTEN PERMISSION FROM KEYSTONE ELECTRONICS CORP.

|  |  |                 |                 |
|--|--|-----------------|-----------------|
| <b>KEYSTONE ELECTRONICS CORP.</b>  |  |                 |                 |
| www.keystone.com • NEW HYDE PARK, NY 11040 • Tel (516) 328-7500          |  |                 |                 |
| PART NAME<br>16mm VERTICAL COIN CELL HOLDER                              |  |                 |                 |
| MATERIAL<br>AS NOTED   |  |                 |                 |
| FINISH<br>AS NOTED   |  | DRN BY<br>NT    |                 |
| TOLERANCES<br>DECIMAL $\pm .010$ [ $\pm 0.25$ ]<br>ANGULAR $\pm 1^\circ$ |  | CODE<br>C       | DATE<br>1.03.11 |
|  |  | DWG NO.<br>1069 | SCALE<br>2.5X   |

## X-ON Electronics

Largest Supplier of Electrical and Electronic Components

*Click to view similar products for [Coin Cell Battery Holders](#) category:*

*Click to view products by [Keystone](#) manufacturer:*

Other Similar products are found below :

[SMTU2450N-LF](#) [PDSN-11-D](#) [1058](#) [1052](#) [799-2007](#) [BH44AAB](#) [BH48DL](#) [BH8000](#) [BS-6-1](#) [79573231](#) [101](#) [3035](#) [1025](#) [1026](#) [1027](#) [103](#)  
[1059](#) [1060](#) [1063](#) [1065](#) [D3](#) [46400000](#) [BC-0403](#) [BH-121-1B](#) [BH-1/2AA-2A](#) [BH-131A](#) [BH-3101A](#) [BH-3103B](#) [BH-311-1A](#) [BH-311-1D](#) [BH-](#)  
[321-1A](#) [BH-321-1B](#) [BH-321-1D](#) [BH-331-3D](#) [BH-331P](#) [BH-333A](#) [BH-341-1P](#) [BH-351A](#) [BH-362B](#) [BH-421A](#) [BH-422A](#) [BH-425A](#) [BH-](#)  
[431-1B](#) [BH-463A](#) [BH-511A](#) [BHC-18650-1P](#) [46300000](#) [46600000](#) [799-2001](#) [SBH-331A](#)