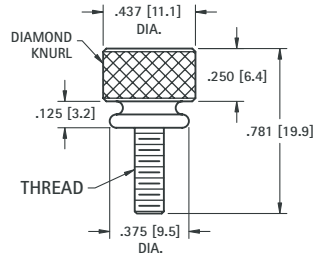


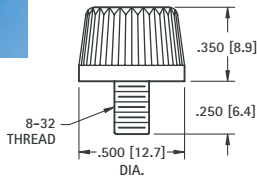
## THUMB SCREWS

For quick removal of panel from chassis. Other variations available



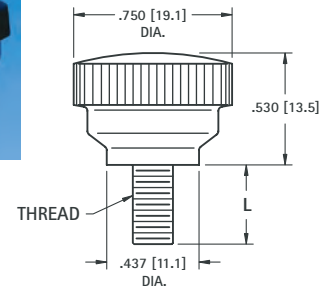
CAT. NO.	THREAD
1708	6-32
1709	8-32
1710	10-32

**MATERIAL:** Brass, Nickel Plate



**CAT. NO. 1711**

**MATERIAL:**  
Knob: Phenolic  
Stud: Steel, Zinc Plate



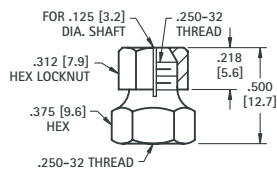
CAT. NO.	L	THREAD
1712	.375 (9.5)	10-24
1720	.500 (12.7)	.250-20

**MATERIAL:**  
Knob: Phenolic  
Stud: Steel, Zinc Plate

## SHAFT LOCKS

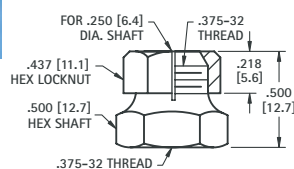
**MATERIAL:** Brass, Nickel Plate

For .125 (3.2) SHAFT



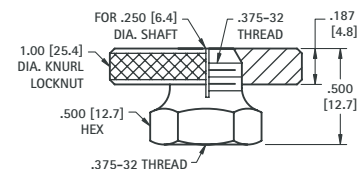
**CAT. NO. 1700**

For .250 (6.4) SHAFT



**CAT. NO. 1701**

For .250 (6.4) SHAFT



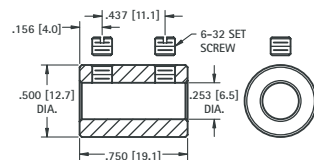
**CAT. NO. 1702**

## .250 (6.4) SHAFT COUPLING



• Two set screws hold shaft securely

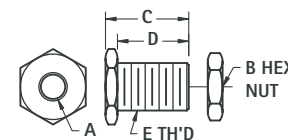
**MATERIAL:** Brass, Nickel Plate  
Supplied unassembled



**CAT. NO. 1453**

## PANEL BEARINGS

STANDARD and MINIATURE



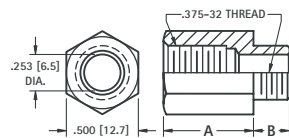
**MATERIAL:** Brass, Nickel Plate  
Supplied unassembled

CAT. NO.	A	B (HEX)	C	D	E THREAD
1705	.253 (6.5)	.437 (11.1)	.500 (12.7)	.437 (11.1)	.375-32 Standard
1706	.128 (3.3)	.343 (8.7)	.437 (11.1)	.375 (9.5)	.250-32 Miniature

## VOLUME CONTROL EXTENDERS



For .250 (6.4) volume control shafts having .375-32 threaded bushings.



CAT. NO.	A	B
1464	.625 (15.9)	.250 (6.4)
1465	.625 (15.9)	.375 (9.5)
1466	.687 (17.4)	.500 (12.7)
1467	.750 (19.1)	.250 (6.4)

**MATERIAL:** Brass, Nickel Plate

## PRECISION PANEL NUTS



For Volume Controls, Switches, Capacitors, Tip Jacks, etc.

CAT. NO.	FOR	THREAD	DIAMETER	THICKNESS
1448	Mounting	.250-32	.375 Hex	.093 (2.38)
1449	Mini. Control	.250-32	.312 Hex	.078 (1.98)
1456	Vol. Control	.375-32	.500 Hex	.093 (2.38)
1458	Switch	.468-32	.562 Hex	.078 (1.98)
1459	Switch Ring	.468-32	.625 Knurled	.062 (1.57)
1472	Filter	.312-32	.375 Hex	.093 (2.38)

**MATERIAL:** Brass, Nickel Plate

## X-ON Electronics

Largest Supplier of Electrical and Electronic Components

*Click to view similar products for [Screws & Fasteners](#) category:*

*Click to view products by [Keystone](#) manufacturer:*

Other Similar products are found below :

[5721-1440-1/4-SS](#) [593503FX](#) [0098.0094](#) [0098.9206](#) [0098.9219](#) [0098.9262](#) [596-2114-013](#) [59781-6](#) [0098.0026](#) [0098.9210](#) [0098.9212](#) [60227-01](#) [60227-04](#) [60227-08](#) [60687-01](#) [LOCK WASHER Black](#) [62153-03](#) [62153-11](#) [M316-KSSTMCZ100](#) [M3440-SS](#) [M3442-SS](#) [M3448-SS](#) [6292-1](#) [6-306105-9](#) [6-306131-4](#) [690432-1](#) [699161-000](#) [7230-3](#) [7244](#) [7248-1](#) [7248-2](#) [745564-1](#) [F1209](#) [751-00001](#) [7680](#) [809704-1](#) [8700](#) [8860220](#) [9047](#) [9521](#) [992326-6](#) [992763-3](#) [1-18024-0](#) [1-18028-2](#) [A168P1](#) [A495P1](#) [1-24921-1](#) [125416-1](#) [1260](#) [13-0036](#) [1301810148](#)