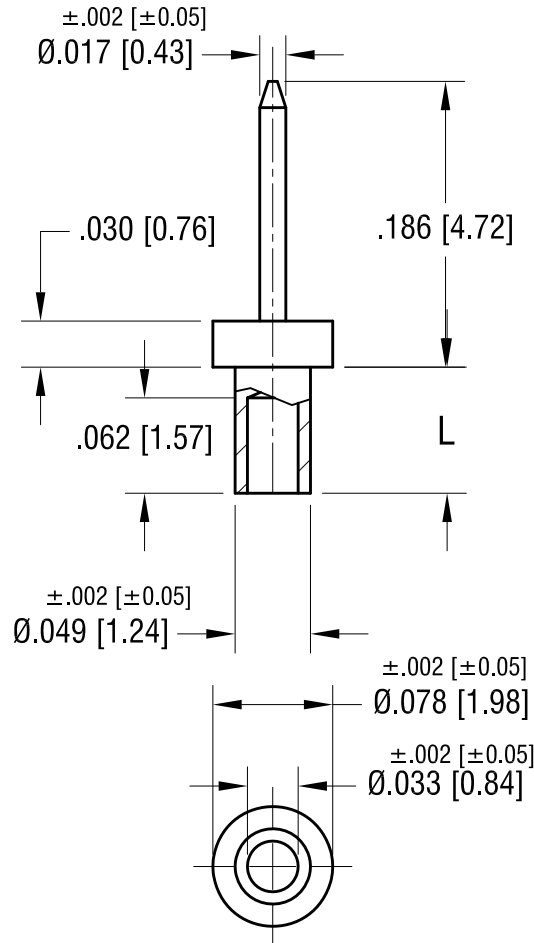


THIS DOCUMENT IS THE PROPERTY OF  
KEYSTONE ELECTRONICS CORP. AND  
SHALL NOT BE REPRODUCED, DISTRIBUTED  
OR USED AS A BASIS FOR MANUFACTURE  
WITHOUT PRIOR WRITTEN PERMISSION  
FROM KEYSTONE ELECTRONICS CORP.

ACTUAL SIZE



P/N 1968-2



NOTE:  
1. MOUNTING HOLE .052 [1.32] DIA.

| PART NO. | 'L' DIM.    |
|----------|-------------|
| 1968-2   | .082 [2.08] |
| 1968-3   | .113 [2.87] |
| 1968-4   | .145 [3.68] |

|  |                           |        |              |
|--|---------------------------|--------|--------------|
| <b>KEYSTONE ELECTRONICS CORP.</b>                              |                           |        |              |
| www.keyelco.com • NEW HYDE PARK, NY 11040 • Tel (516) 328-7500 |                           |        |              |
| PART NAME  |                           |        |              |
| MICRO PIN, SWAGE MOUNT   |                           |        |              |
| MATERIAL   |                           |        |              |
| BRASS  |                           |        |              |
| FINISH   |                           | DRN BY | DATE         |
| TIN PLATE  |                           | BOONE  | 5.06.02      |
|  |                           | APP'D  | SCALE        |
|  |                           |        | 8X           |
| TOLERANCES   | INCH [MM]                 | CODE   | DWG NO.      |
| DECIMAL  | $\pm .005$ [ $\pm 0.13$ ] | C      | <b>1968-</b> |
| ANGULAR  | $\pm 1^\circ$             |        |              |
| UNLESS OTHERWISE SPECIFIED                                     |                           |        |              |

| DATE | DESCRIPTION | REV. |
|------|-------------|------|
|      |             |      |

## X-ON Electronics

Largest Supplier of Electrical and Electronic Components

*Click to view similar products for [Test Plugs & Test Jacks](#) category:*

*Click to view products by [Keystone](#) manufacturer:*

Other Similar products are found below :

[01-2601-4-0210](#) [01-2601-4-0212](#) [01-2604-4-0212](#) [01-2604-5-0210](#) [01-2150-1-0312](#) [01-2350-1-02](#) [01-2352-1-02](#) [01-2368-1-02](#) [01-2604-4-0210](#) [01-2604-5-0212](#) [01-2606-4-0210](#) [01-2606-4-0212](#) [01-2606-5-0212](#) [M39024/10-01G](#) [M39024/10-17G](#) [M39024/11-09G](#) [M39024/11-42](#) [M39024/11-43](#) [M39024/12-08](#) [707-5311](#) [707-5402-01-19](#) [707-5410](#) [923739-40-I](#) [R644543000](#) [R948161000](#) [R999351000](#) [1408-4](#) [1499-101](#) [1533-1](#) [1659559](#) [1659567](#) [1663921](#) [1663939](#) [1696-102](#) [174-R825B-EX](#) [NYS508-BU](#) [NYS508-O](#) [211-101](#) [RS100GBL](#) [RS250GBL](#) [251-102](#) [25-2251-2-03](#) [25-2259-2-03](#) [923743-16-I](#) [923743-24-I](#) [923743-28-I](#) [2854-BLU](#) [2970-BLK](#) [30-443G](#) [1680](#)