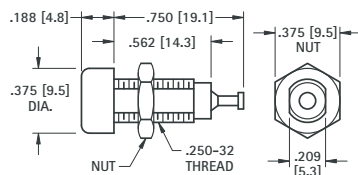


FULLY INSULATED DELUXE TIP JACK

ACCEPTS .080 (2.0) TIP WITH CLOSED ENTRY CONTACT

Fully molded body with recessed closed entry design. Assures maximum retention with .010Ω maximum contact resistance. Prevents accidental insertion of larger diameter probes. Current rating: 10 Amps. Breakdown voltage 5700V RMS. Capacitance to metal panel 2.0 pF nominal. Supplied with nut.



CAT. NO.	COLOR
6030	WHITE
6031	RED
6032	BLACK
6033	GREEN
6034	YELLOW
6035	BLUE

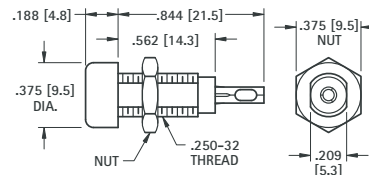
MATERIAL:

Body: Molded Nylon ASTM D4066
 Contact: Beryllium Copper, Silver Plate
 Terminal: Brass, Tin Plate

FULLY INSULATED STANDARD TIP JACK

ACCEPTS .080 (2.0) TIP

Economical tip jacks with molded Nylon body. Low contact resistance. Formed Phosphor Bronze contact with solder hole for ease in attaching wire. Current rating 10 Amps. Breakdown voltage 5700 VRMS. Capacitance to metal panel 3.8 pF. Supplied with nut.



CAT. NO.	COLOR
6018	WHITE
6019	RED
6020	BLACK
6021	GREEN
6022	YELLOW
6023	BLUE

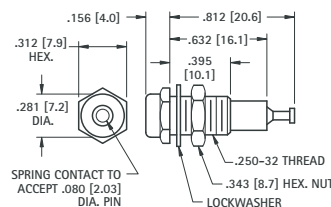
MATERIAL:

Body: Molded Nylon ASTM D4066
 Contact: Phosphor Bronze, Tin Plate

METAL-CLAD TIP JACK (MIL)

ACCEPTS .080 (2.0) TIP WITH CLOSED ENTRY CONTACT

High quality tip jack for high reliability industrial applications. Ideal for use where required to withstand severe environmental conditions, temperature, vibration and salt spray. Recessed closed entry contact. Current rating 10 amps. Breakdown voltage: 5700V RMS. Made to MIL-C39024/10. Capacitance to metal panel 2.0 pF. Supplied complete with hardware.



MATERIAL:

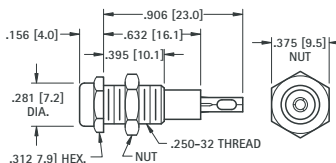
Body: Molded Nylon ASTM D4066
 Shell & Nut: Brass QQ-B-626, Nickel Plate QQ-N-290
 Contact: Beryllium Copper for QQ-C-533. Gold Plate MIL-G-45204

CAT. NO.	COLOR
6012	WHITE
6013	RED
6014	BLACK
6015	GREEN
6016	YELLOW
6017	BLUE

METAL-CLAD TIP JACK (STD)

ACCEPTS .080 (2.0) TIP

Molded Nylon body with metal jacket. Contact is formed from phosphor bronze contact with solder hole for ease in attaching wire. Designed for positive contact, easy insertion and withdrawal. Current rating: 10 Amps. Breakdown voltage 5700V RMS. Capacitance to metal panel 3.8 pF. Supplied with nut.



MATERIAL:

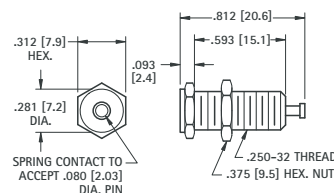
Body: Molded Nylon ASTM D4066
 Shell: Brass, Nickel Plate
 Contact: Phosphor Bronze, Silver Plate

CAT. NO.	COLOR
6024	WHITE
6025	RED
6026	BLACK
6027	GREEN
6028	YELLOW
6029	BLUE

UNINSULATED TIP JACK

ACCEPTS .080 (2.0) TIP

Quality, precision machined tip jack made of brass. Ideal for use on metal panels where grounding is required. Fits panels up to .375 (9.5) Thick. Supplied with nut.



MATERIAL:

Body: Brass, Nickel Plate
 Contact: Beryllium Copper
 Current Rating: 15 Amps

CAT. NO. 6097

SOLDER TIP PLUGS

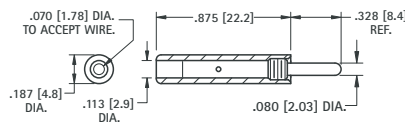
.080 (2.0) DIAMETER TIP



Designed for miniaturization where space is critical. Solder lead connection. Maximum reliability with minimum contact resistance. Base of tip is recessed to eliminate shock or grounding. Fits all standard jacks.

MATERIAL:

Tip: Brass, Nickel Plate
 Handle: Nylon 6/6
 Current Rating: 10 Amps.



CAT. NO.	COLOR	CAT. NO.	COLOR
6006	WHITE	6009	GREEN
6007	RED	6010	YELLOW
6008	BLACK	6011	BLUE

SOLDERLESS TIP PLUGS

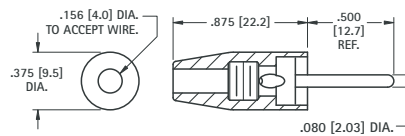
.080 (2.0) DIAMETER TIP



Fully insulated molded nylon sleeve. Maximum reliability with minimum contact resistance. Recessed metal head eliminates possibility of shock or grounding. Designed for solderless connection of up to 16 gauge stranded wire which fits through handle and tip and is secured by screwing handle tight. Fits all standard tip jacks.

MATERIAL:

Tip: Brass, Nickel Plate
 Handle: Nylon 6/6
 Current Rating: 10 Amps.



CAT. NO.	COLOR	CAT. NO.	COLOR
6000	WHITE	6003	GREEN
6001	RED	6004	YELLOW
6002	BLACK	6005	BLUE

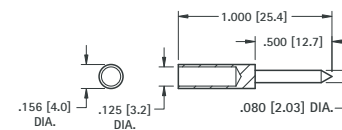
STANDARD PHONE TIP

.080 (2.0) DIAMETER TIP



Accepts up to 12 gauge wire. Fits all standard tip jacks.

MATERIAL: Brass, Nickel Plate

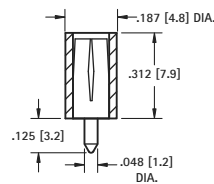


CAT. NO. 1601

PC TEST JACKS



VERTICAL

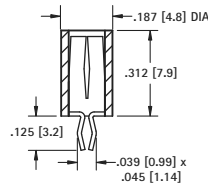


CAT. NO.	COLOR
6036	WHITE
6037	RED
6038	BLACK
6039	YELLOW
6040	GREEN
6041	BLUE

MATERIAL:

Body: Nylon per ASTM D4066
Contact: Brass, Silver Plate

SNAP-FIT VERTICAL

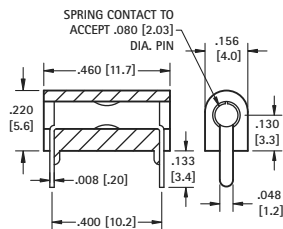


CAT. NO.	COLOR
6042	WHITE
6043	RED
6044	BLACK
6045	YELLOW
6046	GREEN
6047	BLUE

MATERIAL:

Body: Nylon per ASTM D4066
Contact: Beryllium Copper, Silver Plate
Mounting: Snap-fits into .052 (1.32) hole

LOW PROFILE HORIZONTAL

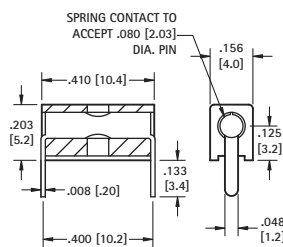


GOLD PLATE CAT. NO.	COLOR	SILVER PLATE CAT. NO.
6060	WHITE	6066
6061	RED	6067
6062	BLACK	6068
6063	YELLOW	6069
6064	GREEN	6070
6065	BLUE	6071

MATERIAL:

Body: Nylon per ASTM D4066
Contact: Beryllium Copper, Gold or Silver Plate

UNIVERSAL HORIZONTAL

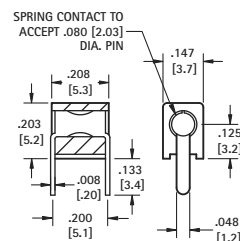


CAT. NO.	COLOR
6054	WHITE
6055	RED
6056	BLACK
6057	YELLOW
6058	GREEN
6059	BLUE

MATERIAL:

Body: Nylon per ASTM D4066
Contact: Beryllium Copper, Silver Plate

MINIATURE HORIZONTAL



CAT. NO.	COLOR
6048	WHITE
6049	RED
6050	BLACK
6051	YELLOW
6052	GREEN
6053	BLUE

MATERIAL:

Body: Nylon per ASTM D4066
Contact: Beryllium Copper, Silver Plate

HIGH TEMPERATURE PTFE INSULATED TEST POINT JACKS

SPECIFICATIONS

Terminal Jack: Beryllium Copper (QQ-C-533)
*Brass ASTM B16

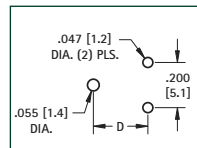
Plating: Gold per MIL-G-45204, Type II

Operating Temperature: -60 (-50) to + 500

Bushing:

White PTFE **RoHS** (RoHS Compliant)

Red or Black PTFE **RoHS** (Non-RoHS Compliant)



Mounting Detail



FIG. 3

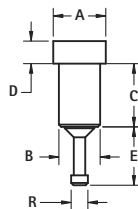


FIG. 4

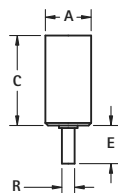
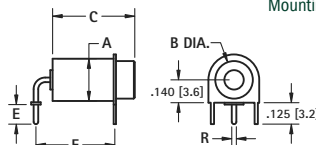


FIG. 5



RoHS			NON-RoHS			FIG.	A	B	C	D	E	R	Probe Dia. ± .001 (.03)	Probe Length
White	Red	Black	White	Red	Black									
11001	11001-R	11001-B	11001	11001-R	11001-B	3	.142 (3.6)	.120 (3.0)	.244 (6.2)	.046 (1.2)	.120 (3.0)	.060 (1.5)	.040 (1.0)	.205 (5.2)
11002	11002-R	11002-B	11002	11002-R	11002-B	3	.142 (3.6)	.120 (3.0)	.283 (7.2)	.046 (1.2)	.120 (3.0)	.060 (1.5)	.040 (1.0)	.245 (6.2)
11003	11003-R	11003-B	11003	11003-R	11003-B	3	.172 (4.4)	.140 (3.6)	.142 (3.6)	.050 (1.3)	.060 (1.5)	.080 (2.0)	.040 (1.0)	.125 (3.2)
11004	11004-R	11004-B	11004	11004-R	11004-B	3	.172 (4.4)	.148 (3.8)	.179 (4.5)	.046 (1.2)	.120 (3.0)	.060 (1.5)	.040 (1.0)	.140 (3.6)
11005	11005-R	11005-B	11005	11005-R	11005-B	3	.218 (5.5)	.185 (4.7)	.301 (7.6)	.050 (1.3)	.105 (2.7)	.125 (3.2)	.080 (2.0)	.315 (8.0)
11006	11006-R	11006-B	11006	11006-R	11006-B	3	.218 (5.5)	.185 (4.7)	.271 (6.9)	.046 (1.2)	.120 (3.0)	.074 (1.9)	.080 (2.0)	.195 (4.9)
11007	11007-R	11007-B	11007	11007-R	11007-B	3	.218 (5.5)	.185 (4.7)	.271 (6.9)	.046 (1.2)	.120 (3.0)	.074 (1.9)	.090 (2.3)	.195 (4.9)
11008	11008-R	11008-B	11008	11008-R	11008-B	3	.218 (5.5)	.185 (4.7)	.301 (7.6)	.046 (1.2)	.120 (3.0)	.074 (1.9)	.080 (2.0)	.225 (5.7)
11009	11009-R	11009-B	11009	11009-R	11009-B	3	.218 (5.5)	.185 (4.7)	.400 (10.2)	.050 (1.3)	.187 (4.8)	.074 (1.9)	.080 (2.0)	.280 (7.1)
11010	11010-R	11010-B	11010	11010-R	11010-B	3	.218 (5.5)	.185 (4.7)	.271 (6.9)	.046 (1.2)	.136 (3.5)	.074 (1.9)	.080 (2.0)	.340 (8.6)
11011	11011-R	11011-B	11011	11011-R	11011-B	4	.218 (5.5)	-	.430 (10.9)	-	.150 (3.8)	.050 (1.3)	.080 (2.0)	.200 (5.1)
11012*	11012-R*	11012-B*	11012	11012-R*	11012-B*	4	.218 (5.5)	-	.500 (12.7)	-	.150 (3.8)	.050 (1.3)	.080 (2.0)	.280 (7.1)
11013	11013-R	11013-B	11013	11013-R	11013-B	5	.218 (5.5)	.187 (4.8)	.689 (17.5)	.500 (12.7)	.125 (3.2)	.050 (1.3)	.080 (2.0)	.500 (12.7)
11014	11014-R	11014-B	11014	11014-R	11014-B	5	.218 (5.5)	.187 (4.8)	.378 (9.6)	.400 (10.2)	.125 (3.2)	.050 (1.3)	.080 (2.0)	.250 (6.4)
11015	11015-R	11015-B	11015	11015-R	11015-B	5	.218 (5.5)	.187 (4.8)	.378 (9.6)	.400 (10.2)	.187 (4.7)	.035 (.89)	.080 (2.0)	.250 (6.4)
11016	11016-R	11016-B	11016	11016-R	11016-B	5	.218 (5.5)	.187 (4.8)	.378 (9.6)	.500 (12.7)	.125 (3.2)	.050 (1.3)	.080 (2.0)	.250 (6.4)

* Terminal Material: Brass ASTM B16

X-ON Electronics

Largest Supplier of Electrical and Electronic Components

Click to view similar products for [Test Probes](#) category:

Click to view products by [Keystone](#) manufacturer:

Other Similar products are found below :

[6214](#) [6474](#) [815003](#) [923832-BK-B](#) [P-KIT-1](#) [KT-MS001](#) [925250-R](#) [923848-C](#) [973368101](#) [972318101](#) [972318100](#) [MXHQ87WJ3000](#) [PK106-3](#) [PK2-5MM-102](#) [TAS90](#) [VL1735/45](#) [973368100](#) [972327100](#) [972327101](#) [973995100](#) [973995101](#) [CT3982B-120](#) [CT4386](#) [PP023-1](#) [PK1-5MM-127](#) [PP026-1](#) [PK103](#) [PK-ZS-013](#) [P6139B-PK10](#) [PQ215](#) [PQ219](#) [PQ218](#) [RT-ZI10C](#) [TT-SI 8071](#) [TT-SI 8050](#) [TT-SI 8010A](#) [TT-SI 7005](#)
[GE.3421](#) [GE.3121](#) [GE.1511](#) [GE.1521](#) [GE.2511](#) [HVP15B](#) [TT-SI7002](#) [4005](#) [4011](#) [4012](#) [4013](#) [4014](#) [4015](#)