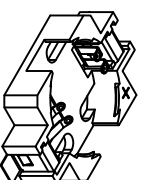


NOTES:
 1. BASE:
 MAT'L - GLASS FILLED LCP UL 94V-0

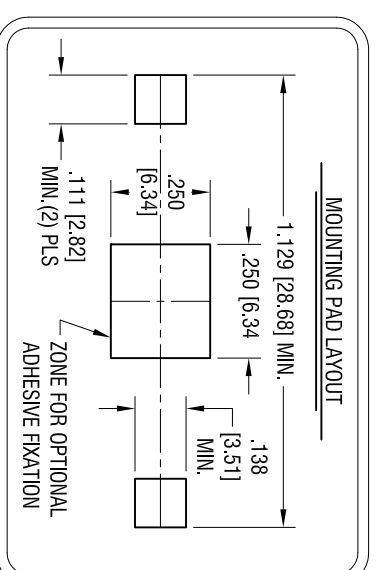
2. CONTACTS:
 MAT'L - .006 [0.15] THK PHOSPHOR BRONZE
 FINISH: GOLD FLASH PLATING



ACTUAL SIZE

THIS DOCUMENT IS THE PROPERTY OF KEYSTONE ELECTRONICS CORP. AND SHALL NOT BE REPRODUCED, DISTRIBUTED OR USED AS A BASIS FOR MANUFACTURE WITHOUT PRIOR WRITTEN PERMISSION FROM KEYSTONE ELECTRONICS CORP.

DATE	DESCRIPTION	REV.
5.09.11	CHANGE AS PER ECN 11-062	A
5.18.11	CHANGE AS PER ECN 110-066	B
5.29.11	CHANGE AS PER ECN 110-089	C
8.09.11	CHANGE AS PER ECN 11-102	D
3.15.12	CHANGE AS PER ECN 12-032	E
7.24.14	CHANGE AS PER ECN 14-079	F
8.12.20	CHANGE AS PER ECN 20-070	G
1.26.21	CHANGE AS PER ECN 21-006 REMOVE NEGATIVE POLARITY MARKING FROM THE BOTTOM INSIDE SURFACE	H



KEYSTONE ELECTRONICS CORP.

www.keystone.com • NEW HYDE PARK, NY 11040 • Tel (516) 328-7500

PART NAME

1632 SMT BATTERY HOLDER

MATERIAL

AS NOTED

FINISH

AS NOTED

TOLERANCES	INCH	[MM]	CODE	DWG NO.
DECIMAL	± .010	[± 0.25]	C	504
ANGULAR	± 1°			

DRN BY	DATE
NT	11.30.10
APP'D	SCALE
	2.5X

X-ON Electronics

Largest Supplier of Electrical and Electronic Components

Click to view similar products for [Coin Cell Battery Holders](#) category:

Click to view products by [Keystone](#) manufacturer:

Other Similar products are found below :

[SMTU2450N-LF](#) [PDSN-11-D](#) [1058](#) [1052](#) [799-2007](#) [BH44AAB](#) [BH48DL](#) [BH8000](#) [BS-6-1](#) [79573231](#) [101](#) [3035](#) [1025](#) [1026](#) [1027](#) [103](#)
[1059](#) [1060](#) [1063](#) [1065](#) [D3](#) [46400000](#) [BC-0403](#) [BH-121-1B](#) [BH-1/2AA-2A](#) [BH-131A](#) [BH-3101A](#) [BH-3103B](#) [BH-311-1A](#) [BH-311-1D](#) [BH-](#)
[321-1A](#) [BH-321-1B](#) [BH-321-1D](#) [BH-331-3D](#) [BH-331P](#) [BH-333A](#) [BH-341-1P](#) [BH-351A](#) [BH-362B](#) [BH-421A](#) [BH-422A](#) [BH-425A](#) [BH-](#)
[431-1B](#) [BH-463A](#) [BH-511A](#) [BHC-18650-1P](#) [46300000](#) [46600000](#) [799-2001](#) [SBH-331A](#)