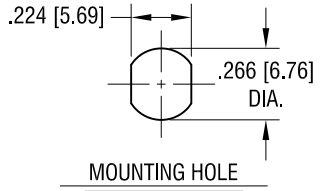
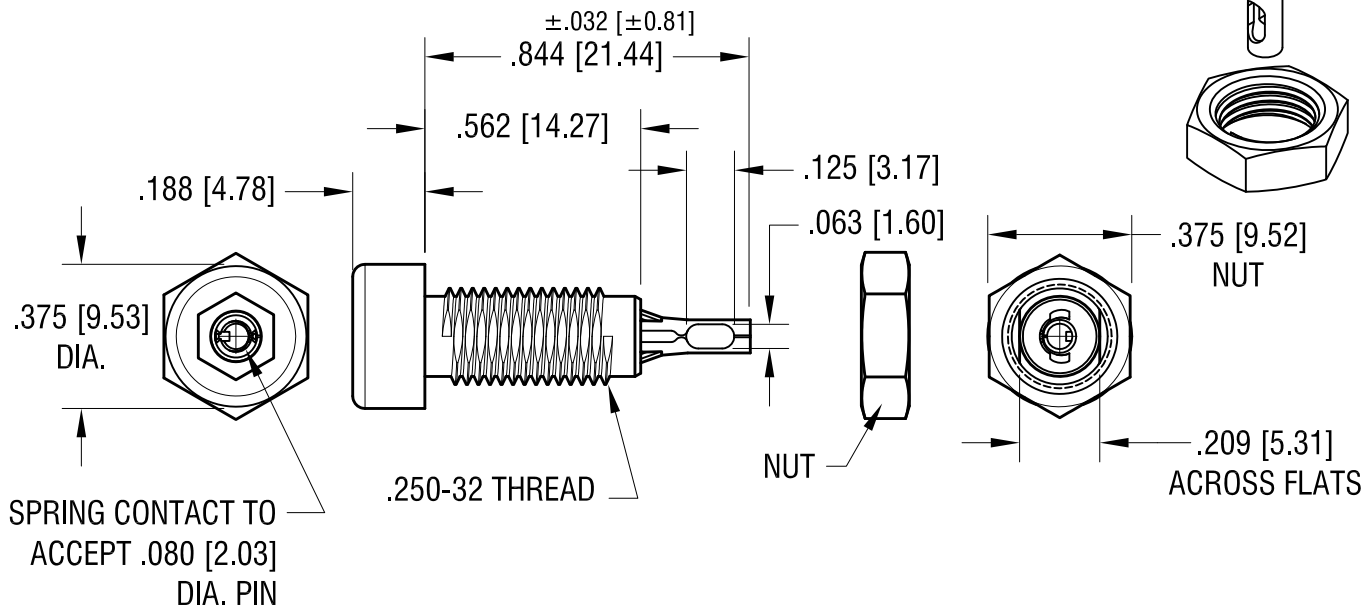
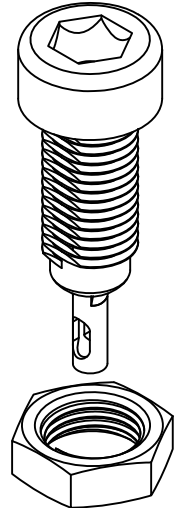


THIS DOCUMENT IS THE PROPERTY OF KEYSTONE ELECTRONICS CORP. AND SHALL NOT BE REPRODUCED, DISTRIBUTED OR USED AS A BASIS FOR MANUFACTURE WITHOUT PRIOR WRITTEN PERMISSION FROM KEYSTONE ELECTRONICS CORP.



RATINGS:
CURRENT: 10 AMPS
BREAKDOWN VOLTAGE: 5700 V RMS
CONTACT RESISTANCE: 0.010 OHMS MAX.
CONTACT-TO-PANEL C: 2 pF NOMINAL



SPRING CONTACT TO ACCEPT .080 [2.03] DIA. PIN

- NOTES:**
- CONTACT:
 MAT'L - PHOSPHOR BRONZE,
 TIN PLATE.
 BODY:
 MAT'L - NYLON 6/6 PER ASTM D4066
 - NUT: BRASS, NICKEL PLATED,
 SUPPLIED UNASSEMBLED.

| PART NO. | COLOR |
|----------|--------|
| 6018 | WHITE |
| 6019 | RED |
| 6020 | BLACK |
| 6021 | GREEN |
| 6022 | YELLOW |
| 6023 | BLUE |

| DATE | DESCRIPTION | REV. |
|---------|--------------------------|------|
| 4.12.12 | CHANGE AS PER ECN 12-045 | D |
| 2.18.11 | CHANGE AS PER ECN 11.018 | C |
| 4.23.10 | CHANGE AS PER ECN 10-030 | B |
| 2.5.03 | CHANGE AS PER ECN 03-010 | A |

KEYSTONE ELECTRONICS CORP.
 www.keyelco.com • ASTORIA, N.Y. 11105-2017 • Tel (718) 956-8900

PART NAME: **INSULATED TIP JACK**

MATERIAL: **AS NOTED**

FINISH: **AS NOTED**

DRN BY: **BOONE** DATE: **12.10.82**

APP'D: _____ SCALE: **2X**

TOLERANCES INCH [MM]
 DECIMAL ± .010 [± 0.25]
 ANGULAR ± 1°
 UNLESS OTHERWISE SPECIFIED

CODE: **C** DWG NO. **6018-6023**

X-ON Electronics

Largest Supplier of Electrical and Electronic Components

Click to view similar products for [Test Plugs & Test Jacks](#) category:

Click to view products by [Keystone](#) manufacturer:

Other Similar products are found below :

[01-2601-4-0210](#) [01-2601-4-0212](#) [01-2604-4-0212](#) [01-2604-5-0210](#) [01-2150-1-0312](#) [01-2350-1-02](#) [01-2352-1-02](#) [01-2368-1-02](#) [01-2604-4-0210](#) [01-2604-5-0212](#) [01-2606-4-0210](#) [01-2606-4-0212](#) [01-2606-5-0212](#) [M39024/10-01G](#) [M39024/10-17G](#) [M39024/11-09G](#) [M39024/11-42](#) [M39024/11-43](#) [M39024/12-08](#) [707-5311](#) [707-5402-01-19](#) [707-5410](#) [923739-40-I](#) [R644543000](#) [R948161000](#) [R999351000](#) [1408-4](#) [1499-101](#) [1533-1](#) [1659559](#) [1659567](#) [1663921](#) [1663939](#) [1696-102](#) [174-R825B-EX](#) [NYS508-BU](#) [NYS508-O](#) [211-101](#) [RS100GBL](#) [RS250GBL](#) [251-102](#) [25-2251-2-03](#) [25-2259-2-03](#) [923743-16-I](#) [923743-24-I](#) [923743-28-I](#) [2854-BLU](#) [2970-BLK](#) [30-443G](#) [1680](#)