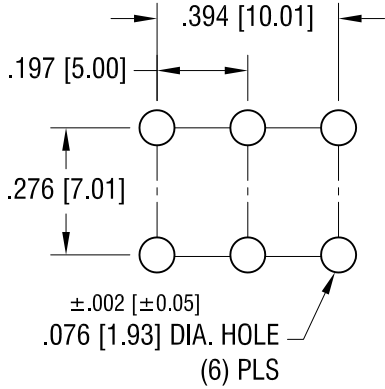
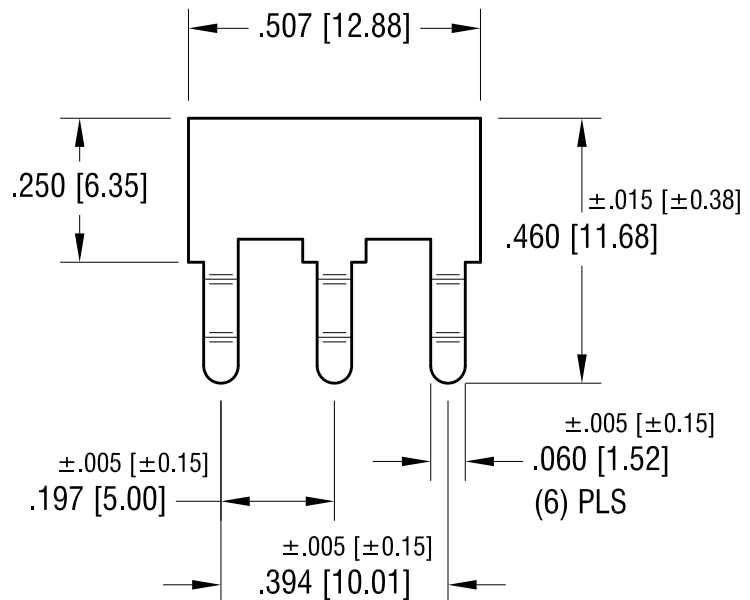
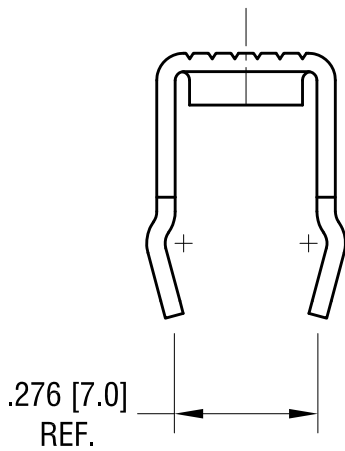
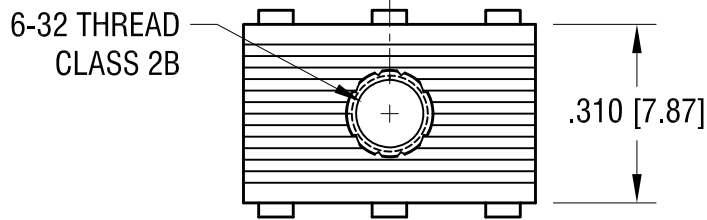
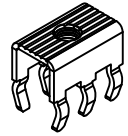


THIS DOCUMENT IS THE PROPERTY OF KEYSTONE ELECTRONICS CORP. AND SHALL NOT BE REPRODUCED, DISTRIBUTED OR USED AS A BASIS FOR MANUFACTURE WITHOUT PRIOR WRITTEN PERMISSION FROM KEYSTONE ELECTRONICS CORP.

**MOUNTING DETAIL**



**ACTUAL SIZE**



|          |                          |      |   |                                    |                 |                        |
|----------|--------------------------|------|---|------------------------------------|-----------------|------------------------|
| 11.15.17 | CHANGE AS PER ECN 17-067 | F    | <b>KEYSTONE ELECTRONICS CORP.</b><br>www.keyelco.com • NEW HYDE PARK, NY 11040 • Tel (516) 328-7500 |                                    |                 |                        |
| 1.14.16  | CHANGE AS PER ECN 16-009 | E    | PART NAME<br>PC SCREW TERMINAL  |                                    |                 |                        |
| 2.22.13  | CHANGE AS PER ECN 13-021 | D    | MATERIAL<br>.032 [0.81] TH'K BRASS  |                                    |                 |                        |
| 7.14.09  | CHANGE AS PER ECN 09-101 | C    | FINISH<br>MATTE TIN PLATE   |                                    | DRN BY<br>BOONE | DATE<br>9.20.01        |
| 1.31.08  | CHANGE AS PER ECN 08-067 | B    |   |                                    | APP'D           | SCALE<br>3X            |
| DATE     | DESCRIPTION              | REV. | TOLERANCES<br>DECIMAL<br>ANGULAR<br>UNLESS OTHERWISE SPECIFIED                                      | INCH [MM]<br>±.010 [±0.25]<br>± 1° | CODE<br>C       | DWG NO.<br><b>7786</b> |

## X-ON Electronics

Largest Supplier of Electrical and Electronic Components

*Click to view similar products for [Terminals](#) category:*

*Click to view products by [Keystone](#) manufacturer:*

Other Similar products are found below :

[00-054007-01074-6](#) [00-054007-70206-1](#) [00-054007-70210-8](#) [00-054007-70217-7](#) [00-054007-70226-9](#) [00-054007-70228-3](#) [00-054007-70248-1](#) [00-054007-70256-6](#) [00-054007-70301-3](#) [00-054007-70316-7](#) [00-054007-49560-4](#) [00-054007-70209-2](#) [00-054007-70225-2](#) [00-054007-70227-6](#) [00-054007-70231-3](#) [00-054007-70241-2](#) [00-054007-70242-9](#) [00-054007-70244-3](#) [00-054007-70246-7](#) [00-054007-70263-4](#) [00-054007-70288-7](#) [00-054007-70290-0](#) [00-054007-70300-6](#) [00-054007-70304-4](#) [01-2065-1-0216](#) [01-2900-1-04412](#) [00581P0075](#) [600TS-10](#) [60205-1](#) [604200-1](#) [605601-1](#) [60598-1-CUT-TAPE](#) [61314-6-C](#) [61810-3](#) [61-S](#) [62149-1](#) [626-0194](#) [62-NBM-A](#) [62-SN](#) [62-SP](#) [640179-1](#) [M55155/059I03](#) [M55155/079C01](#) [M55155/099H02](#) [M55155/109H01](#) [M55155/109H02](#) [M55155/12XH05](#) [M55155/16XH02](#) [M55155/29-5S](#) [M55155/29XJ08](#)