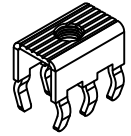
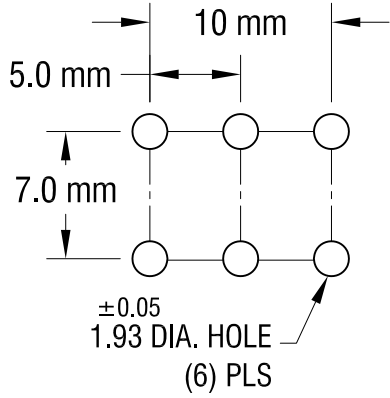


THIS DOCUMENT IS THE PROPERTY OF KEYSTONE ELECTRONICS CORP. AND SHALL NOT BE REPRODUCED, DISTRIBUTED OR USED AS A BASIS FOR MANUFACTURE WITHOUT PRIOR WRITTEN PERMISSION FROM KEYSTONE ELECTRONICS CORP.

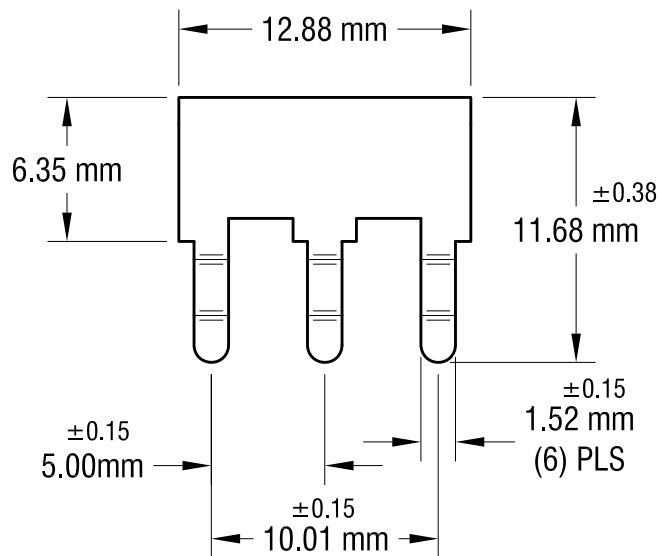
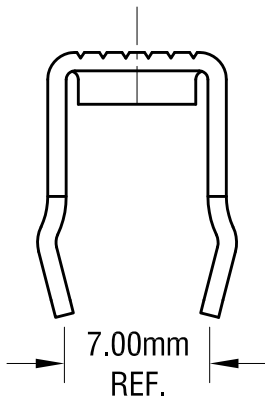
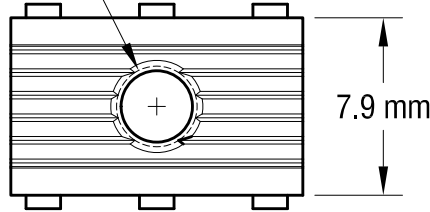
**ACTUAL SIZE**



**MOUNTING DETAIL**



M4  
THREAD



|          |                          |      |
|----------|--------------------------|------|
| 11.15.17 | CHANGE AS PER ECN 17-066 | C    |
| 2.11.15  | CHANGE AS PER ECN 15-022 | B    |
| 9.30.09  | CHANGE AS PER ECN 09-138 | A    |
| DATE     | DESCRIPTION              | REV. |

|  |            |        |             |
|--|------------|--------|-------------|
| <b>KEYSTONE ELECTRONICS CORP.</b>                              |            |        |             |
| www.keyelco.com • NEW HYDE PARK, NY 11040 • Tel (516) 328-7500 |            |        |             |
| PART NAME  |            |        |             |
| PC METRIC SCREW TERMINAL                                       |            |        |             |
| MATERIAL   |            |        |             |
| 0.8 mm TH'K BRASS  |            |        |             |
| FINISH   |            | DRN BY | DATE        |
| MATTE TIN PLATE  |            | NT     | 6.24.08     |
|  |            | APP'D  | SCALE       |
|  |            |        | 3X          |
| TOLERANCES   | INCH [MM]  | CODE   | DWG NO.     |
| DECIMAL  | ± [± 0.25] | C      | <b>7798</b> |
| ANGULAR  | ± 1°       |        |             |
| UNLESS OTHERWISE SPECIFIED                                     |            |        |             |

## X-ON Electronics

Largest Supplier of Electrical and Electronic Components

*Click to view similar products for [Terminals](#) category:*

*Click to view products by [Keystone](#) manufacturer:*

Other Similar products are found below :

[00-054007-01074-6](#) [00-054007-70206-1](#) [00-054007-70210-8](#) [00-054007-70217-7](#) [00-054007-70226-9](#) [00-054007-70228-3](#) [00-054007-70248-1](#) [00-054007-70256-6](#) [00-054007-70301-3](#) [00-054007-70316-7](#) [0-0320562-0](#) [00-054007-49560-4](#) [00-054007-70209-2](#) [00-054007-70225-2](#) [00-054007-70227-6](#) [00-054007-70231-3](#) [00-054007-70241-2](#) [00-054007-70242-9](#) [00-054007-70244-3](#) [00-054007-70246-7](#) [00-054007-70263-4](#) [00-054007-70288-7](#) [00-054007-70290-0](#) [00-054007-70300-6](#) [00-054007-70304-4](#) [01-2065-1-0216](#) [01-2900-1-04412](#) [00581P0075](#) [600TS-10](#) [60205-1](#) [604200-1](#) [605601-1](#) [60598-1-CUT-TAPE](#) [61314-6-C](#) [61810-3](#) [61-S](#) [61-SN](#) [626-0194](#) [62-NBM-A](#) [62-SN](#) [62-SP](#) [640179-1](#) [M55155/059I03](#) [M55155/079C01](#) [M55155/099H02](#) [M55155/109H01](#) [M55155/109H02](#) [M55155/12XH05](#) [M55155/16XH02](#) [M55155/29-5S](#)