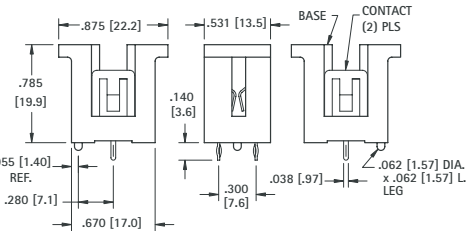


VERTICAL 20mm COIN CELL

This space saving vertical design features a rugged, lightweight body that mounts squarely and securely on PC boards for easy installation and replacement of batteries. Reliable spring tension assures low contact resistance.

- Accepts all major manufacturers' 20mm diameter batteries
- Molded notch prevents improper insertion of 2032 size cells
- Space saving design for high density packaging
- Retains cells securely, withstands shock and vibration
- Polarity clearly marked
- Mounts securely for wave soldering
- Temperature range -60°F to +293°F (-50°C to +145°C)



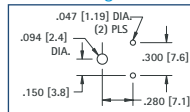
COMPACT

MATERIAL:

Contacts: .012 (.30) thick Spring Steel, Tin Nickel Plate
Base: PBT, UL Rated 94V-0

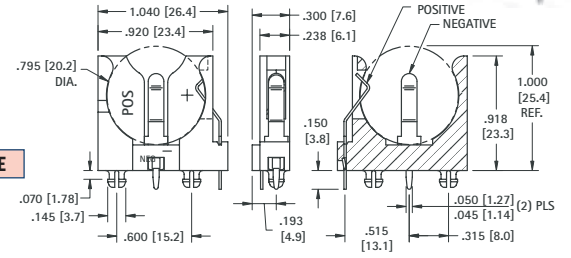
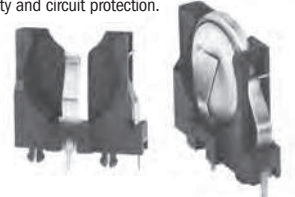
CAT. NO. 1067

Mounting Detail



A "unique" space saving design. The battery is installed vertically from the top. The contacts of this holder are polarized to assure proper continuity and circuit protection.

- Polarized holder
- Mounts securely for wave soldering
- Reliable spring tension assures low contact resistance
- Retains 20mm batteries securely to withstand shock and vibration
- Temperature range -60°F to +293°F (-50°C to +145°C)



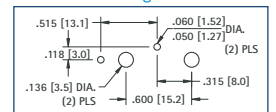
SLIMLINE

MATERIAL:

Contacts: .016 (.41) thick Spring Steel, Tin Nickel Plate
Base: PBT, UL Rated 94V-0

CAT. NO. 1065

Mounting Detail



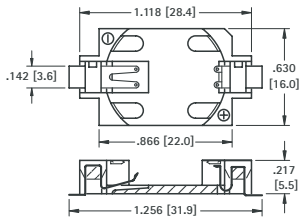
LOW PROFILE SURFACE & THRU HOLE MOUNT COIN CELL HOLDERS

AVAILABLE ON TAPE AND REEL



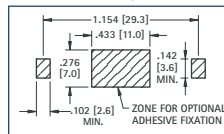
Designed for quick and easy installation and replacement of 1220 and 2032 coin cell lithium batteries. The contacts of these holders are polarized to assure proper continuity and circuit protection.

- Polarized Holder
- Retains cell securely to withstand shock and vibration
- Reliable dual spring contacts assure low contact resistance



2032 SURFACE MOUNT

Pad Layout

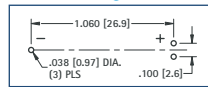


MATERIAL:

Contacts: .006 (.15) thick Phosphor Bronze
Cat. No. 1060 - Gold Plate
Cat. No. 1059 - Tin Plate
Base: Glass Filled LCP, UL Rated 94V-0

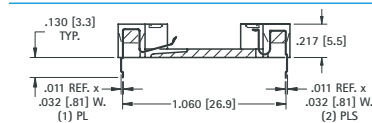
2032 THRU HOLE MOUNT

Mounting Detail



CAT. NO. 1060 (Bulk) **CAT. NO. 1060TR** (Tape & Reel)

Tape & Reel Spec's: 44mm wide; 24mm pitch; 13 inch reel (500 pieces per reel)

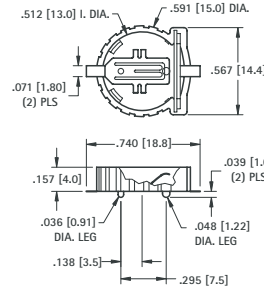


CAT. NO. 1059

AVAILABLE ON TAPE AND REEL



- Low Profile for densely packaged PCB's
- Compatible with vacuum and mechanical pick & place assembly systems
- Conductive polystyrene carrier tape meets ANSI/EIA - 481 standard

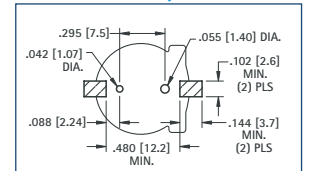


MATERIAL:

Contacts: .008 (.20) thick Phosphor Bronze, Gold Plate
Base: Glass filled PPS, UL Rated 94V-0

1220 SURFACE MOUNT

Pad Layout



CAT. NO. 1056 (Bulk)

CAT. NO. 1056TR (Tape & Reel)

Tape & Reel Spec's: 32mm wide; 20mm pitch; 13 inch reel (500 pieces per reel)

SURFACE MOUNT COIN CELL HOLDERS



AVAILABLE ON TAPE AND REEL

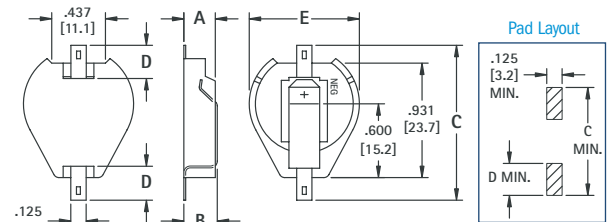
SMT Design - Holders for 20mm and 23mm Lithium Coin Cell Batteries

- Temp. range -60°F to +540°F (-50°C to +282°C)
- Ideal for memory back-up applications
- Polarity clearly marked (+)
- UL approved material, 94V-0
- Rugged construction, light weight
- Compatible with vacuum and mechanical pick & place systems
- Low profile for high density packaging
- SMT solder tail with "Flow-Hole" design for increased joint strength
- Viewable solder tails assures reliable joint inspection
- Safe for all soldering & reflow operations
- All conductive polystyrene carrier tape meets ANSI/EIA - 481 standard

SMALL PAD PATTERN								
CAT. NO.	ON TAPE	CELLS	A	B	C	D	E	CELL BATTERY
1061	1061TR	1	.256 (6.5)	.290 (7.4)	1.015 (25.8)	.156 (4.0)	.896 (22.8)	20mm 2016*, 2020, 2025, 2032
1062	1062TR	2	.375 (9.5)	.406 (10.3)	1.015 (25.8)	.156 (4.0)	.896 (22.8)	23mm 2320, 2325, 2330
1071	1071TR	1	.256 (6.5)	.290 (7.4)	1.015 (25.8)	.156 (4.0)	1.000 (25.4)	

*Cat. No. 1061 (1 or 2 cells); Cat. No. 1062 (3 cells)

LARGE PAD PATTERN								
CAT. NO.	ON TAPE	CELLS	A	B	C	D	E	CELL BATTERY
1063	1063TR	1	.256 (6.5)	.290 (7.4)	1.250 (31.8)	.278 (7.1)	.896 (22.8)	20mm 2016*, 2020, 2025, 2032
1064	1064TR	2	.375 (9.5)	.406 (10.3)	1.250 (31.8)	.278 (7.1)	.896 (22.8)	23mm 2320, 2325, 2330
1073	1073TR	1	.256 (6.5)	.290 (7.4)	1.250 (31.8)	.278 (7.1)	1.000 (25.4)	



Pad Layout

*Cat. No. 1063 (1 or 2 cells); Cat. No. 1064 (3 cells)

MATERIAL: Contacts: .015 (.38) thick Steel, Tin Nickel Plate Base: Nylon 46, UL Rated 94V-0
Tape & Reel Spec's: 44mm wide; 32mm pitch; 13 inch reel (200 pieces per reel)

X-ON Electronics

Largest Supplier of Electrical and Electronic Components

Click to view similar products for [Control Switches](#) category:

Click to view products by [Keystone](#) manufacturer:

Other Similar products are found below :

[80887-99](#) [80932-99](#) [86855-00](#) [88814-30](#) [1424293-1](#) [HW4S-2TC10](#) [89721-12](#) [89804-08](#) [SSN](#) [RL01801](#) [ASD2L20N-LVO](#) [50051857-17](#)
[50099156-001-05](#) [51.155R-15200](#) [50058920-26](#) [CP-FA51](#) [CP-FA49](#) [ACCU-SC/L-3000](#) [PP9M](#) [PP87G](#) [PP86GA](#) [PP71G](#) [PP70G](#) [PP6G](#)
[PP62G](#) [PP58BL](#) [PP56G](#) [PP86GB](#) [PP77GA](#) [PP76G](#) [PP4M](#) [PP47G](#) [PP46G](#) [PP41M](#) [PP40G](#) [PP32G](#) [RD-20](#) [PP23M](#) [PP12G](#) [PORTAPRO](#)
[POM-2708](#) [PNB-2005](#) [3057.0012](#) [CV-075](#) [CV-140SB](#) [CV-150](#) [CV-150S](#) [214X20XK](#) [CV-180](#) [CV-200MB](#)