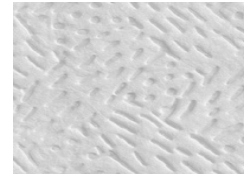


## Product Data Sheet for 7624

### Product Information

<b>Product Long Code</b>	07624000
<b>Customer Facing Code</b>	7624
<b>Description</b>	KIMTECH PURE* Cleaning Wipers - 1/4 Fold / White
<b>PDS Reference</b>	04/03/2014



### Product Dimensions

**Case Contents** 12 Packs x 35 Sheets = 420 Sheets

Dimension		
38.50	x	35.10
		Length x Width(cm)



### Brand Statements

A range of high-performance wiper solutions, suitable for ISO Class 4 or higher cleanroom environments. Ideal for: dry wiping of critical equipment and surfaces in pharmaceutical, high-tech biotechnology, medical device industries and food processing industries.  
Available as: white, 1ply, quarter fold wipers, wrapped in a splash-proof, water-repellent polybag, giving you immediate access to hygienically protected wipers in your work area.

### Product Specifications

<b>Fold Type</b>	1/4	<b>Impregnated</b>	No
<b>Bar Code (Case)</b>	05027375019708	<b>Bar Code (Pack)</b>	5033848005161
<b>Recycled Fibre(%)</b>	0	<b>Virgin Fibre(%)</b>	100
<b>Country of Origin</b>	UNITED STATES	<b>Colour</b>	White

### International Standards and Symbols

#### Marketing



TECHNOLOGY

Technology

#### Solution



Safer Workplace

We know staff safety is your top priority. You can rely on our solutions to protect them, their environment and your important work.



Productive Workplace

The success of your business hinges on your work efficiency. That's why our solutions are designed to help improve your productivity.

### Packaging

<b>Unit Of Sale</b>	Case	<b>Max Weight(kg)</b>	0.73
<b>Case Dimension(LXWXH)(cm)</b>	40 x 38 x 25.2	<b>Inner Pack Material</b>	Plastic
<b>Outer Pack Material</b>	Paper	<b>Commodity Code</b>	56031290

Pallet Type	LxWxH (m)	Cases per Layer	Layers per Pallet	Cases per Pallet
A2	1.20 x 1.00 x 1.41	6	5	30

## Information

It is the employer's responsibility to assess the risk of the task to be undertaken and determine the correct choice of wipers for the task. The manufacturer, Kimberly-Clark, does not accept any responsibility for the incorrect choice or misuse of wipers shown in this brochure. All care has been taken to ensure that the information contained herein is as accurate as possible at the time of publication, however errors may occur and legislation concerning personal protective equipment is under constant review and may change in the lifetime of this brochure. Accordingly, the specifications for the products may be subject to change. We would advise you to contact INFOFAX if you have any queries concerning the products shown or the suitability of such products for the particular task. Always dispose of used protective equipment in a safe and appropriate manner in accordance with European, National and Local environmental regulations

**Infobox Details**

infofax@kcc.com

**Websites**[www.kcprofessional.co.uk](http://www.kcprofessional.co.uk)**Customer Service Number**

For more information please contact Customer Service during regular office hours-0870 551 044

## X-ON Electronics

Largest Supplier of Electrical and Electronic Components

*Click to view similar products for [Chemicals](#) category:*

*Click to view products by [Kimberly Clark](#) manufacturer:*

Other Similar products are found below :

[DP-605NS](#) [3045-QT](#) [3125-9S](#) [3748-Q-58"x8"](#) [FO-25DT](#) [S1009-KIT-A-CS8606](#) [DP100-200ML](#) [1743-2FP](#) [152-KA-NC](#) [VERSIL406](#) [826-450G](#) [3789-Q](#) [9729](#) [9223](#) [9945](#) [7000000275](#) [1601](#) [8330-19G](#) [841AR-150ML](#) [842AR-P](#) [843WB-15ML](#) [8462-85ML](#) [4352-1L](#) [4354-1L](#) [838AR-P](#) [838AR-15ML](#) [419D-P-BK](#) [419D-P-GR](#) [419D-P-WH](#) [8MT-450](#) [8MT-25](#) [832HD-25ML](#) [8616-25ML](#) [832FX-450ML](#) [834ATH-375ML](#) [832HD-400ML](#) [843AR-340G](#) [843ER-800ML](#) [9310-300ML](#) [4228-225ML](#) [419D-55ML](#) [8800-375ML](#) [8810-375ML](#) [8820-2.55L](#) [419E-340G](#) [842UR-12ML](#) [419D-1L](#) [CW3300WHITE](#) [CW2205](#) [10447](#)