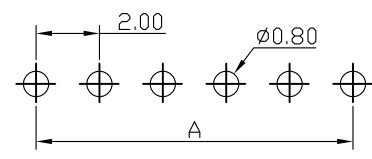
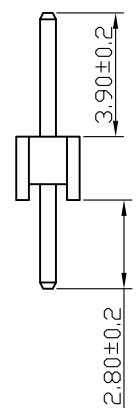
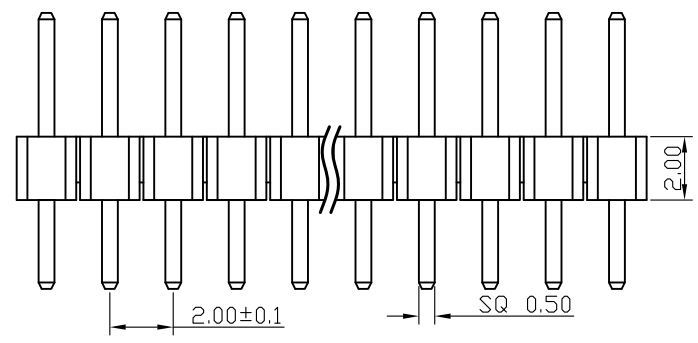
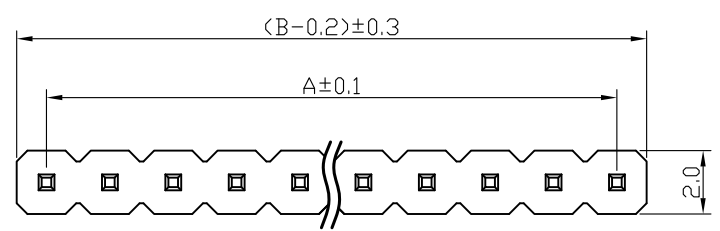


SPECIFICATIONS

Current Rating: 1.5 Amps
 Insulation Resistance: 1000M Ω Min
 Contact Resistance: 20m Ω Max
 Withstanding Voltage: AC 500V
 Operation Temperature: -40° to +105°
 Contact Material: Brass
 Standard: PA6T
 Insulator Material: Polyester (UL 94V-0)
 Contact Plating: Gold Flash
 Max. Processing Temp: 240° C for 30-60 seconds
 (260° C for 5 seconds)



RECOMMEND P. C. B LAYOUT
 PCB TOLERANCE: ± 0.05 (TOP VIEW)

深圳市金航标电子有限公司

www.kinghelm.com.cn

| No. of | DIM. A | DIM. B | No. of | DIM. A | DIM. B | No. of | DIM. A | DIM. B | No. of | DIM. A | DIM. B |
|--------|--------|--------|--------|--------|--------|--------|--------|--------|--------|--------|--------|
| 1 | 0.00 | 2.00 | 11 | 20.00 | 22.00 | 21 | 40.00 | 42.00 | 31 | 60.00 | 62.00 |
| 2 | 2.00 | 4.00 | 12 | 22.00 | 24.00 | 22 | 42.00 | 44.00 | 32 | 62.00 | 64.00 |
| 3 | 4.00 | 6.00 | 13 | 24.00 | 26.00 | 23 | 44.00 | 46.00 | 33 | 64.00 | 66.00 |
| 4 | 6.00 | 8.00 | 14 | 26.00 | 28.00 | 24 | 46.00 | 48.00 | 34 | 66.00 | 68.00 |
| 5 | 8.00 | 10.00 | 15 | 28.00 | 30.00 | 25 | 48.00 | 50.00 | 35 | 68.00 | 70.00 |
| 6 | 10.00 | 12.00 | 16 | 30.00 | 32.00 | 26 | 50.00 | 52.00 | 36 | 70.00 | 72.00 |
| 7 | 12.00 | 14.00 | 17 | 32.00 | 34.00 | 27 | 52.00 | 54.00 | 37 | 72.00 | 74.00 |
| 8 | 14.00 | 16.00 | 18 | 34.00 | 36.00 | 28 | 54.00 | 56.00 | 38 | 74.00 | 76.00 |
| 9 | 16.00 | 18.00 | 19 | 36.00 | 38.00 | 29 | 56.00 | 58.00 | 39 | 76.00 | 78.00 |
| 10 | 18.00 | 20.00 | 20 | 38.00 | 40.00 | 30 | 58.00 | 60.00 | 40 | 78.00 | 80.00 |

KH-2PH180-1X5P-L8.7

0755-28190160

UNLESS OTHERWISE SPECIFIED TOLERANCE
 X : ± 0.30 X° : $\pm 5^\circ$
 X.X : ± 0.25 X.X° : $\pm 1^\circ$
 X.XX : ± 0.20 X.XX° : $\pm 0.5^\circ$

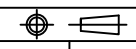
DRAWN NAME
 2.0PH H2.0 1xnPin 180度 PC2.8 PA3.9 PB2.0 L8.7 6T

| | | | | | |
|------|----|-------|-----|------------|--|
| SIZE | A4 | SCALE | N:1 | PROUCT NO. | |
| REV | A | UNIT | mm | PROJECT | |

CHECKED: 陈超凡
 DATE: 2022/04/24

CHECKED: / /
 DATE: / /

APPROVED: / /
 DATE: / /



PAGE 1/1

X-ON Electronics

Largest Supplier of Electrical and Electronic Components

Click to view similar products for [Headers & Wire Housings](#) category:

Click to view products by [Kinghelm](#) manufacturer:

Other Similar products are found below :

[0015917161](#) [0022155065](#) [57102-F02-18ULF](#) [58102-G61-06LF](#) [582553-1](#) [01.001.5753.1](#) [0050291907](#) [02.125.8002.8](#) [609-3404](#) [61062-3](#)
[CSU011177004](#) [622-0430](#) [622-3653LF](#) [63453-116](#) [636-1030](#) [636-1427](#) [636-3427](#) [636-4007](#) [641938-9](#) [65495-038](#) [65692-001LF](#) [65781-018](#)
[65781-047](#) [65817-010LF](#) [65817-015LF](#) [67095-007LF](#) [67601157](#) [68631-112](#) [68645-018](#) [699319-000](#) [70.362.1628.0](#) [70-4210](#) [70-4226B](#) [70-](#)
[4853B](#) [71.350.2428.0](#) [733-134](#) [733-162](#) [760-3052](#) [MHR-64-VUAL](#) [80.063.4001.1](#) [800-90-001-10-001000](#) [801-43-002-10-013000](#)
[801-43-006-10-002000](#) [803-43-024-10-001000](#) [803-93-012-10-001000](#) [8-1437020-4](#) [819-22-004-30-001101](#) [820-22-006-30-001101](#)
[820-22-008-30-001101](#) [821-22-002-10-001101](#)