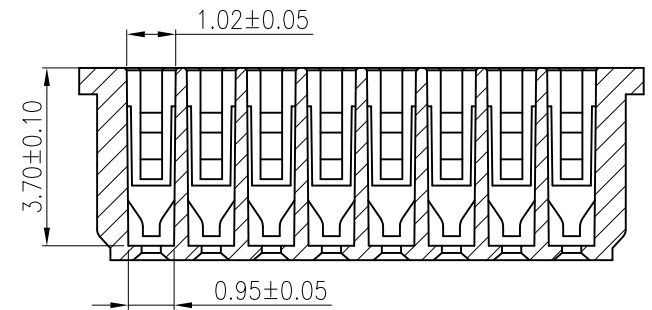
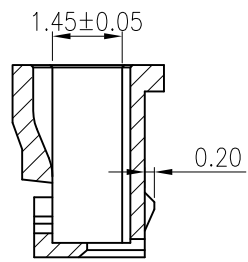
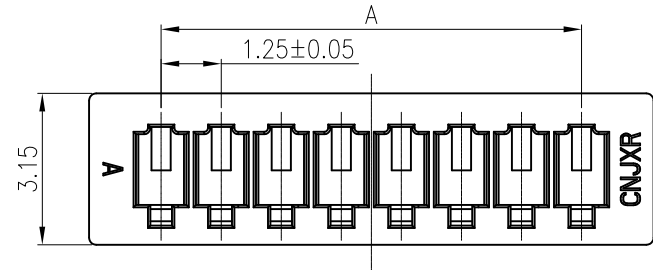


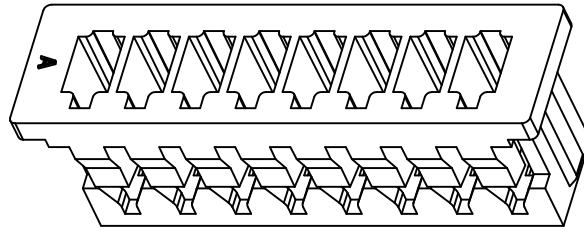
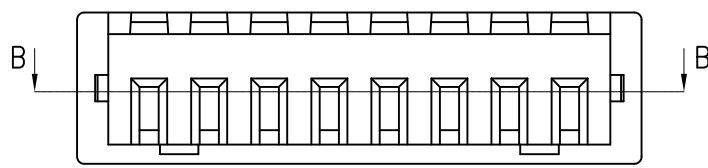
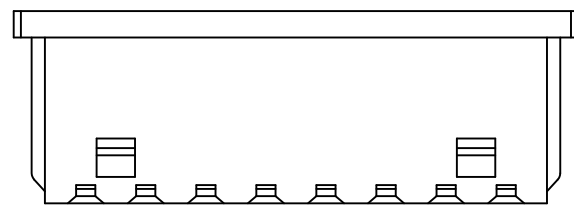
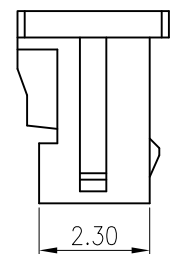
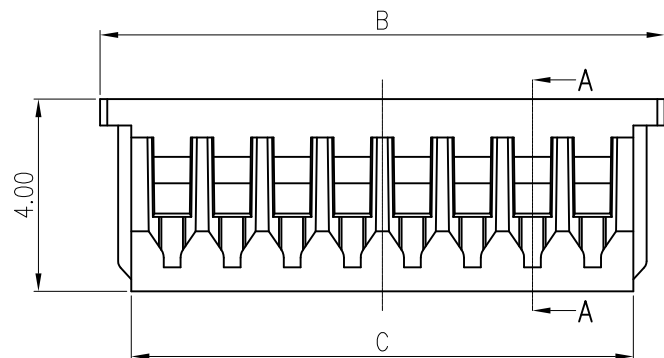
Engineer Drawing

REV	ECN NO.	DESCRIPTION	DATE	APP'D
A/0		RELEASE TO PRODUCTION	11/10/21'	Colinye



A-A

B-B



Poles	A	B	C
2	1.25	4.25	2.95
3	2.50	5.50	4.20
4	3.75	6.75	5.45
5	5.00	8.00	6.70
6	6.25	9.25	7.95
7	7.50	10.50	9.20
8	8.75	11.75	10.45
9	10.00	13.00	11.70
10	11.25	14.25	12.95
11	12.50	15.50	14.20
12	13.75	16.75	15.45
13	15.00	18.00	16.70
14	16.25	19.25	17.95
15	17.50	20.50	19.20
16	18.75	21.75	20.45

NOTES:

1. Material: Nylon66, UL94V-0
2. Color: Natural(White)
3. Current Rating: 2A AC,DC
4. Voltage Rating: 125V AC,DC
5. Temperature Rang: -25°C~+85°C
6. Stroage Temperature Rang: <30°C 60%RH
7. Contact Resistance: 20mΩ Max
8. Insulation Resistance: 100MΩ Min
9. Withstanding Voltage: 250V AC/minute
10. Ordering Code: A1250H-x

<p>TOLERANCE</p> <p>X. ±0.30</p> <p>X.X ±0.25</p> <p>X.XX ±0.20</p> <p>Angle ±3°</p> <p>UNLESS OTHERWISE SPECIFIED</p>	APPROVALS		DATE	<p>深圳市金航标电子有限公司</p> <p>www.kinghelm.com.cn</p>		
	DRAWN		11/10/21'	KH-A1250H-8P-JK		
	CHK'D		11/10/21'	PART NO.	TITLE:	
	APP'D		11/10/21'	A1250H-x	WIRE TO BOARD, PLUG, PITCH 1.25mm, CRIMP TYPE, INSULATOR	
	UNITS mm	SCALE 1:1	SIZE: A4		SHEET 1 OF 1 097	
					REV.A/0	

X-ON Electronics

Largest Supplier of Electrical and Electronic Components

Click to view similar products for [Headers & Wire Housings](#) category:

Click to view products by [Kinghelm](#) manufacturer:

Other Similar products are found below :

[57102-F02-18ULF](#) [58102-G61-06LF](#) [582553-1](#) [009176003701906](#) [01.001.5753.1](#) [0050291907](#) [02.125.8002.8](#) [609-3404](#) [61062-3](#)
[CSU011177004](#) [622-0430](#) [622-3653LF](#) [63453-116](#) [636-1030](#) [636-1427](#) [636-3427](#) [636-4007](#) [641938-9](#) [65495-038](#) [65692-001LF](#) [65781-018](#)
[65781-047](#) [65817-010LF](#) [65817-015LF](#) [66207-023LF](#) [67095-007LF](#) [67601157](#) [68631-112](#) [68645-018](#) [699319-000](#) [M90C108951C](#)
[70.362.1628.0](#) [70-4210](#) [70-4226B](#) [70-4853B](#) [707-5028](#) [71.350.2428.0](#) [71961-016LF](#) [733-134](#) [733-162](#) [754199-000](#) [760-3052](#) [80.063.4001.1](#)
[800-90-001-10-001000](#) [800-90-010-10-002000](#) [801-43-002-10-013000](#) [801-43-006-10-002000](#) [803-41-018-10-001000](#) [803-43-024-10-](#)
[001000](#) [803-93-012-10-001000](#)