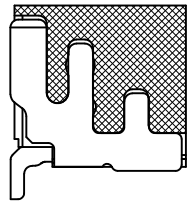
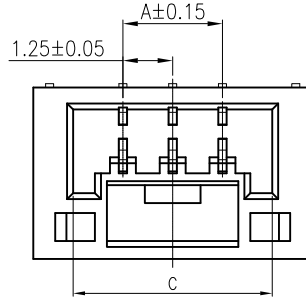


Engineer Drawing

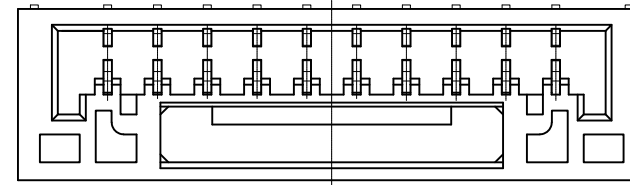
REV	ECN NO.	DESCRIPTION	DATE	APP'D
A/0		RELEASE TO PRODUCTION	01/29/18'	Scrth



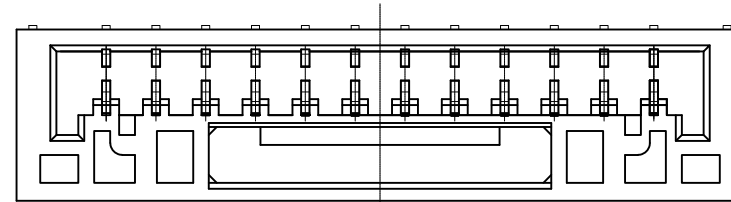
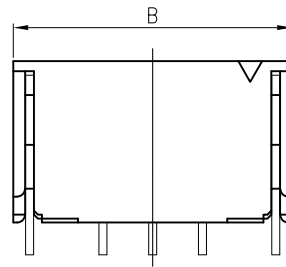
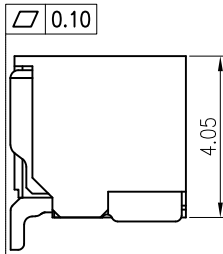
B-B



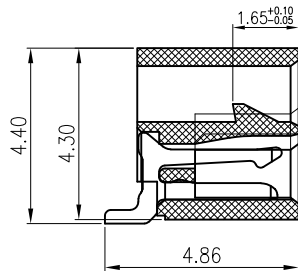
2~7pin



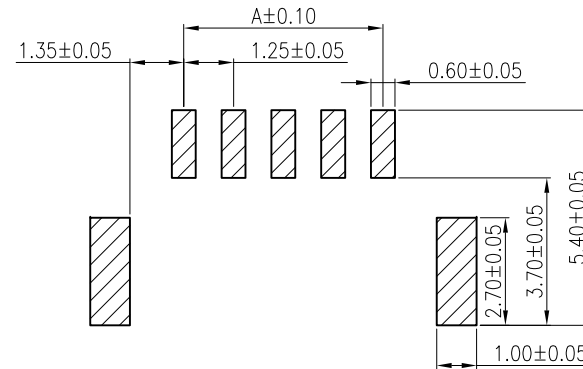
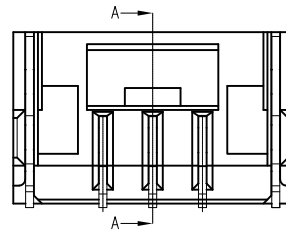
8~11pin



12~16pin



A-A



PCB LAYOUT

Poles	A	B	C
2	1.25	5.75	3.75
3	2.50	7.00	5.00
4	3.75	8.25	6.25
5	5.00	9.50	7.50
6	6.25	10.75	8.75
7	7.50	12.00	10.00
8	8.75	13.25	11.25
9	10.00	14.50	12.50
10	11.25	15.75	13.75
11	12.50	17.00	15.00
12	13.75	18.25	16.25
13	15.00	19.50	17.50
14	16.25	20.75	18.75
15	17.50	22.00	20.00

NOTES:

1. Material:
 Insulation:LCP/PA9T,UL94V-0(Nature)
 Pin:Phosphor bronze/Tin-Plated
 Tab:Phosphor bronze/Tin-Plated
2. Current Rating: 1A AC,DC
3. Voltage Rating: 100V AC,DC
4. Temperature Rang: -25°C~+85°C
5. Contact Resistance: 30mΩ Max
6. Insulation Resistance: 100MΩ Min
7. Withstanding Voltage: 500V AC/minute
8. Ordering Code: A1252RS-x

TOLERANCE X. ±0.30 X.X ±0.25 X.XX ±0.20 Angle ±3° UNLESS OTHERWISE SPECIFIED	APPROVALS DRAWN <i>Zhang Liao Tao</i>	DATE 01/29/18'	深圳市金航标电子有限公司 KH-A1252RS-6P	www.kinghelm.com.cn 0755-28190160	
	CHK'D <i>Art Phi</i>	01/29/18'	PART NO. A1252RS-x	TITLE: WIRE TO BOARD, PLUG, PITCH 1.25mm, CRIMP TYPE, ASSEMBLY	
	APP'D <i>Art Phi</i>	01/29/18'	DRAWING NO. EN-A1252RS-x		
	UNITS mm SCALE 1:1 SIZE: A4		SHEET 1 OF 1 001	REV.A/0	

X-ON Electronics

Largest Supplier of Electrical and Electronic Components

Click to view similar products for [Headers & Wire Housings](#) category:

Click to view products by [Kinghelm](#) manufacturer:

Other Similar products are found below :

[57102-F02-18ULF](#) [58102-G61-06LF](#) [582553-1](#) [009176003701906](#) [01.001.5753.1](#) [0050291907](#) [02.125.8002.8](#) [609-3404](#) [61062-3](#)
[CSU011177004](#) [622-0430](#) [622-3653LF](#) [63453-116](#) [636-1030](#) [636-1427](#) [636-3427](#) [636-4007](#) [641938-9](#) [644827-2](#) [65495-038](#) [65692-001LF](#)
[65781-018](#) [65781-047](#) [65817-010LF](#) [65817-015LF](#) [66207-023LF](#) [67095-007LF](#) [67601157](#) [68631-112](#) [68645-018](#) [699319-000](#)
[M90C108951C](#) [70.362.1628.0](#) [70-4210](#) [70-4226B](#) [70-4853B](#) [707-5028](#) [71.350.2428.0](#) [71961-016LF](#) [733-134](#) [733-162](#) [754199-000](#) [760-](#)
[3052](#) [80.063.4001.1](#) [800-90-001-10-001000](#) [800-90-010-10-002000](#) [801-43-002-10-013000](#) [801-43-006-10-002000](#) [803-41-018-10-001000](#)
[803-43-024-10-001000](#)