

**Ordering Information:**

A2541WV-XP - \*\*\* - \* - \* - \*\*\*  
 1 2 3 4 5

1.Part No.

2.Size(H):

(blank): 2.54mm  
 H15: 1.50mm  
 H17: 1.70mm  
 H20: 2.00mm  
 H30: 3.00mm

3.Style:

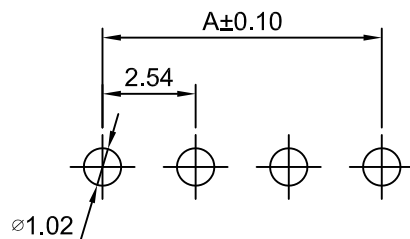
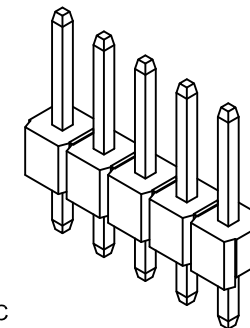
(blank): Type 1  
 K: Type 2

4.Material:

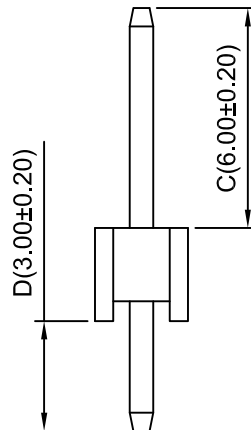
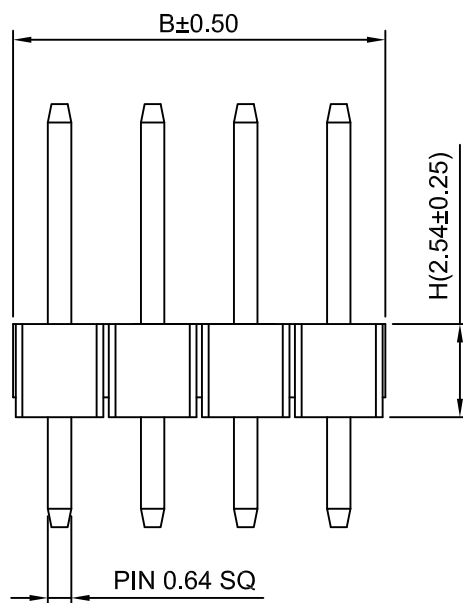
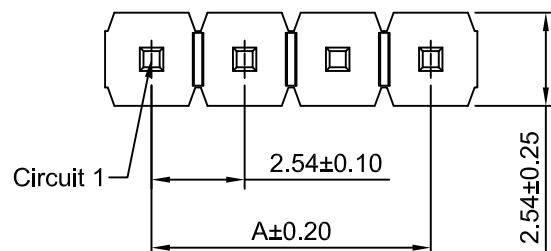
(blank): PBT,UL94V-0  
 GN: PBT,UL94V-0 (Green)  
 NAT: PBT,UL94V-0 (Natural)  
 6T: Nylon 6T,UL94V-0  
 GWT: Nylon 6T,UL94V-0,GWT 750°C

5.Finish:

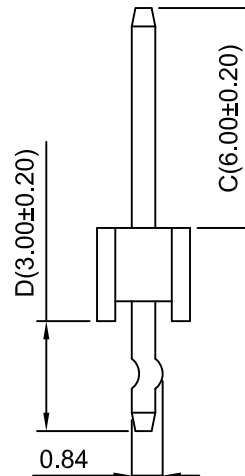
(blank): Gold over Nickel  
 G10: Gold over Nickel(Au:10u")  
 G15: Gold over Nickel(Au:15u")  
 G30: Gold over Nickel(Au:30u")  
 T: Tin over Nickel



**P.C.B LAYOUT**  
**TOLERANCE:±0.05**



**TYPE 1**



**TYPE 2**

**SPECIFICATIONS:**

Current Rating: 3A AC,DC  
 Voltage Rating: 250V AC,DC  
 Temperature Range: -40°C ~ +105°C  
 Contact Resistance: 20mΩ Max  
 Insulation Resistance: 1000MΩ Min  
 Withstanding Voltage: 1500V AC/minute  
 Pin Material:Brass/Gold over Nickel  
 Material:PBT,UL94V-0 (Black)

**Ordering Information & Dimensions**

Circuits	Dimensions (mm)		Circuits	Dimensions (mm)		Circuits	Dimensions (mm)	
	A	B		A	B		A	B
1P	---	2.54	15P	35.56	38.10	29P	71.12	73.66
2P	2.54	5.08	16P	38.10	40.64	30P	73.66	76.20
3P	5.08	7.62	17P	40.64	43.18	31P	76.20	78.74
4P	7.62	10.16	18P	43.18	45.72	32P	78.74	81.28
5P	10.16	12.70	19P	45.72	48.26	33P	81.28	83.82
6P	12.70	15.24	20P	48.26	50.80	34P	83.82	86.36
7P	15.24	17.78	21P	50.80	53.34	35P	86.36	88.90
8P	17.78	20.32	22P	53.34	55.88	36P	88.90	91.44
9P	20.32	22.86	23P	55.88	58.42	37P	91.44	93.98
10P	22.86	25.40	24P	58.42	60.96	38P	93.98	96.52
11P	25.40	27.94	25P	60.96	63.50	39P	96.52	99.06
12P	27.94	30.48	26P	63.50	66.04	40P	99.06	101.60
13P	30.48	33.02	27P	66.04	68.58			
14P	33.02	35.56	28P	68.58	71.12			

深圳市金航标电子有限公司 [www. BDS666. COM](http://www.bds666.com)  
 KH-A2541WV-18P 0755-83044319

Unit	Scale	Sheet	TITLE
mm	5:1	1 of 1	2.54mm PLTCH 180° SINGLE ROW PIN HEADER
DRWN	CHK'D	APPR	
Dengchun Yi	Dlankul Wan	Jack Yin	DRAWING NO.
General Tolerances			THIRD ANGLE PROJECTION
x.xx±0.25			REV
x.xxx±0.20			
x.xxxx±0.15			A2541WV-XP
ANGLES ±1°			
REV	DESCRIPTION	DATE	A4

A4	CHANGE THE DRAWING	2020.09.02
A3	CHANGE THE DRAWING	2020.01.13
A2	CHANGE THE INFORMATION	2019.04.29
A1	UPDATED VERSION	2018.03.30
A0	NEW RELEASE	2009.05.10
REV	DESCRIPTION	DATE

## X-ON Electronics

Largest Supplier of Electrical and Electronic Components

*Click to view similar products for [Headers & Wire Housings](#) category:*

*Click to view products by [Kinghelm](#) manufacturer:*

Other Similar products are found below :

[0015917161](#) [0022155065](#) [57102-F02-18ULF](#) [58102-G61-06LF](#) [582553-1](#) [01.001.5753.1](#) [0050291907](#) [02.125.8002.8](#) [609-3404](#) [61062-3](#)  
[CSU011177004](#) [622-0430](#) [622-3653LF](#) [63453-116](#) [636-1030](#) [636-1427](#) [636-3427](#) [636-4007](#) [641938-9](#) [65495-038](#) [65692-001LF](#) [65781-018](#)  
[65781-047](#) [65817-010LF](#) [65817-015LF](#) [67095-007LF](#) [67601157](#) [68631-112](#) [68645-018](#) [699319-000](#) [70.362.1628.0](#) [70-4210](#) [70-4226B](#) [70-](#)  
[4853B](#) [71.350.2428.0](#) [733-134](#) [733-162](#) [760-3052](#) [MHR-64-VUAL](#) [80.063.4001.1](#) [800-90-001-10-001000](#) [801-43-002-10-013000](#)  
[801-43-006-10-002000](#) [803-43-024-10-001000](#) [803-93-012-10-001000](#) [8-1437020-4](#) [819-22-004-30-001101](#) [820-22-006-30-001101](#)  
[820-22-008-30-001101](#) [821-22-002-10-001101](#)