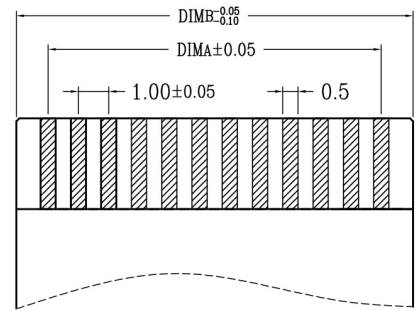
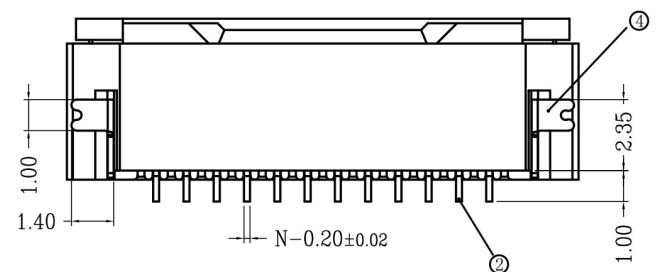
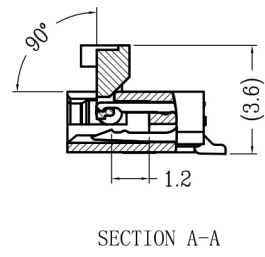
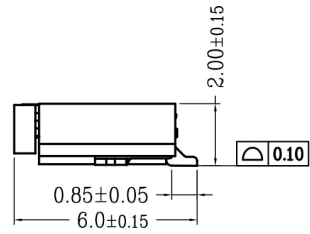
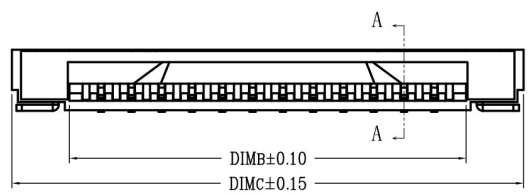
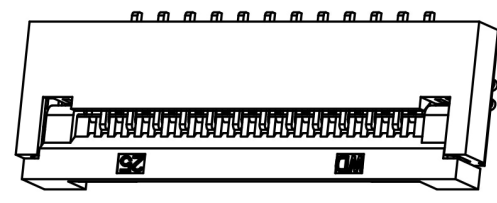
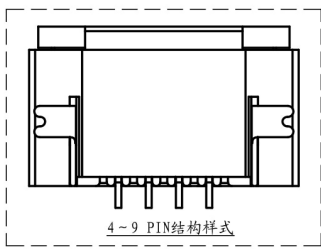
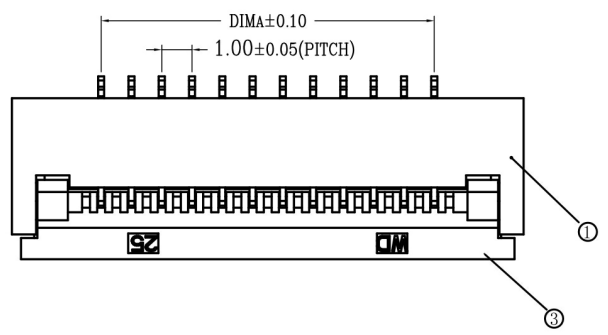


|    |        |           |
|----|--------|-----------|
| 版次 | 变更摘要   | 日期        |
| 1  | 增加料号说明 | 2015/1/28 |

| 序号 | 品名             | 材质             |
|----|----------------|----------------|
| ①  | 0.5掀盖胶芯 (H2.0) | LCP UL94V-0 本色 |
| ②  | 0.5掀盖端子 (H2.0) | 磷青铜/表面镀锡       |
| ③  | 0.5掀盖后盖 (H2.0) | LCP UL94V-0 黑色 |
| ④  | 0.5掀盖焊片 (H2.0) | 黄铜/表面镀锡        |

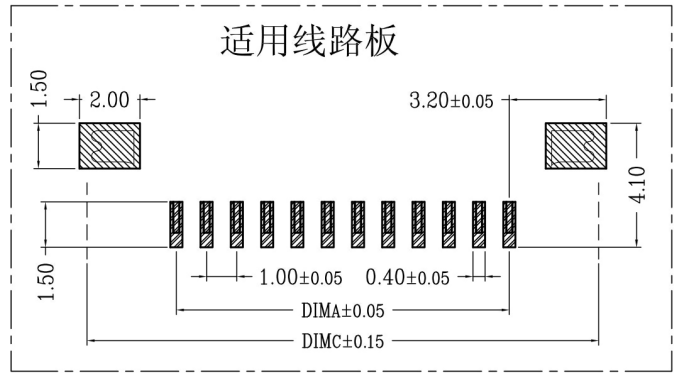


| CKT | DIMA  | DIMB  | DIMC  |
|-----|-------|-------|-------|
| 4   | 3.00  | 5.10  | 8.90  |
| 5   | 4.00  | 6.10  | 9.90  |
| 6   | 5.00  | 7.10  | 10.90 |
| 7   | 6.00  | 8.10  | 11.90 |
| 8   | 7.00  | 9.10  | 12.90 |
| 9   | 8.00  | 10.10 | 13.90 |
| 10  | 9.00  | 11.10 | 14.90 |
| 11  | 10.00 | 12.10 | 15.90 |
| 12  | 11.00 | 13.10 | 16.90 |
| 13  | 12.00 | 14.10 | 17.90 |
| 14  | 13.00 | 15.10 | 18.90 |
| 15  | 14.00 | 16.10 | 19.90 |
| 16  | 15.00 | 17.10 | 20.90 |
| 17  | 16.00 | 18.10 | 21.90 |
| 18  | 17.00 | 19.10 | 22.90 |
| 19  | 18.00 | 20.10 | 23.90 |
| 20  | 19.00 | 21.10 | 24.90 |
| 21  | 20.00 | 22.10 | 25.90 |
| 22  | 21.00 | 23.10 | 26.90 |
| 23  | 22.00 | 24.10 | 27.90 |
| 24  | 23.00 | 25.10 | 28.90 |
| 25  | 24.00 | 26.10 | 29.90 |
| 26  | 25.00 | 27.10 | 30.90 |
| 27  | 26.00 | 28.10 | 31.90 |
| 28  | 27.00 | 29.10 | 32.90 |
| 29  | 28.00 | 30.10 | 33.90 |
| 30  | 29.00 | 31.10 | 34.90 |

- 技术指标:
1. 塑件表面应光洁、无毛边、无明显收缩、缺陷、裂纹等现象。
  2. 温度范围: -25° C~85° C.
  3. 额定电压: 50V, AC/DC(等效).
  4. 接触电阻: ≤0.03Ω.
  5. 绝缘电阻: ≥500MΩ
  6. 产品料号:

适用扁平线

适用线路板



XW10202-\*\*\*-\*\*-\*\*

NO OF CKT (产品PIN数) 00 后盖有LOGO:WD  
0W 后盖无LOGO

Plating (电镀方式) 0 端子全雾锡  
1 端子全金 (G/F OVERALL)  
5 端子半金锡

Packing (包装方式) T TUBE管装  
R TAPE & REEL卷装

深圳市金航标电子有限公司 WWW.BDS666.COM

KH-FG1.0-H2.0-6PIN 0755-83044319

|             |                         |            |        |
|-------------|-------------------------|------------|--------|
| 品名 (TITLE)  | 1.0 Pitch掀盖卧式下接 (H=2.0) | 制图 (DR)    | Anlan  |
| 料号 (DWG.NO) | XW10202-***-**-**       | 校对 (CHKD)  | 王涛     |
| 比例 (SCALE)  | 1:1                     | 审核 (APPD)  | 黄志明    |
| 单位 (UNITS)  | mm                      | 张数 (SHEET) | 1 OF 1 |
| 尺寸 (SIZE)   | A4                      | REV        | A      |

一般公差 (TOLERANCE)  
X ±0.50 XX ±1.0  
Y ±0.20 Z ±0.5  
ANGLES ±1°

## X-ON Electronics

Largest Supplier of Electrical and Electronic Components

*Click to view similar products for [FFC & FPC Connectors](#) category:*

*Click to view products by [Kingham](#) manufacturer:*

Other Similar products are found below :

[00-6200-227-022-800](#) [006205250500825+](#) [006205280500825+](#) [FPH-1602G](#) [086222026001800](#) [52610-0675](#) [62674-201121DLF](#) [52746-1671-TR250](#) [10051922-1610EHLF](#) [10051922-2810EHLF](#) [686322124422](#) [XF3M-2915-1B-R100](#) [AYF353125A](#) [AYF530665TA](#) [AYF534065TA](#) [20FLH-RSM1-TB](#) [207356-1](#) [SFW12R-5STE9LF](#) [SFW18R-1STAE9LF](#) [SFW4R-5STE9LF](#) [52807-0430](#) [046283021002868+](#) [FFC05011-10SBB114W5M](#) [502250-8027](#) [67000-008LF](#) [200528-0260](#) [FH28K-10S-0.5SH](#) [FH52K-6S-0.5SH](#) [0.5K-DX-30PWB](#) [DS1020-08-10VBT12](#) [THD0515-34CL-GF](#) [X05A10L28G](#) [ECC2841061EU](#) [1.0K-DHQX-16PWB](#) [1.0K-DHQX-30PWB](#) [1775333-6](#) [10054365-202110ELF](#) [10054365-242110ELF](#) [10054365-282110ELF](#) [10064555-392220HLF](#) [59453-041110EBHLF](#) [59453-091110EDHLF](#) [62674-241141ALF](#) [62684-432100ALF](#) [62684-451100AHLF](#) [62684-5721N0ALF](#) [HFW11R-1STE1MTLF](#) [HFW12R-1STE9LF](#) [HFW14R-1STE9MTLF](#) [HFW18S-2STE9LF](#)