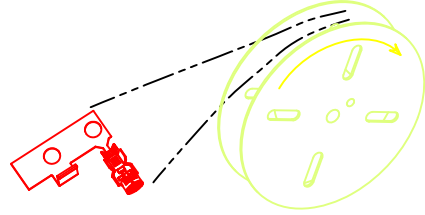


REV	ECN NO	DESCRIPTION	DATE	APPD
A		*****	2014.03.11	

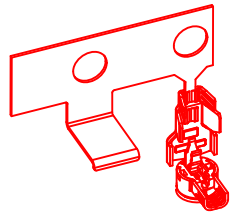
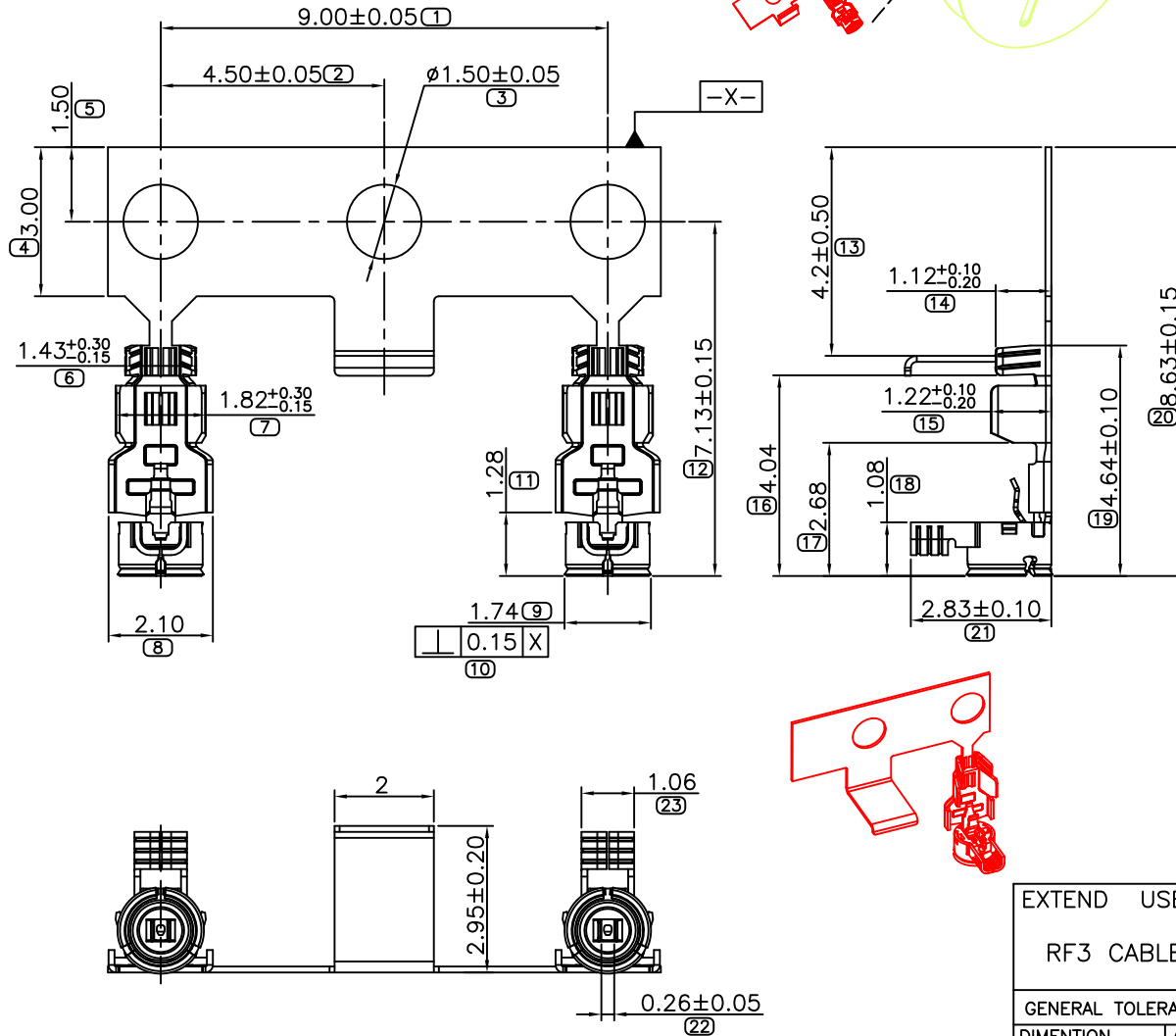


说明:
NOTE:

1. 塑胶材料: 热塑性塑胶;
HOUSING MATERIAL: THERMOPLASTIC PLASTIC, UL 94V-0;
端子材料: 铜合金, 表面镀金;
CONTACT MATERIAL: COPPER ALLOY, GOLD PLATED ALL OVER;
外壳材料: 铜合金, 表面镀金或镀镍;
SHELL MATERIAL: COPPER ALLOY, GOLD OR NICKEL PLATED ALL OVER;

2. 产品性能:
PERFORMANCE:

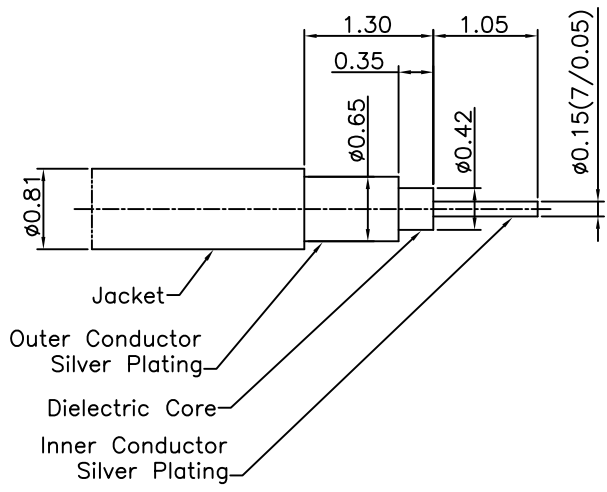
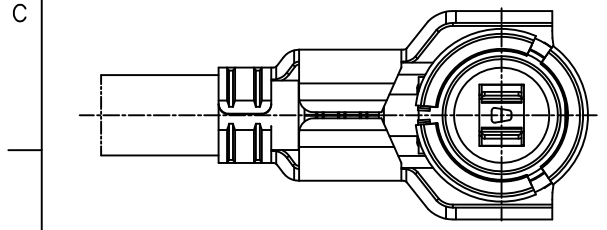
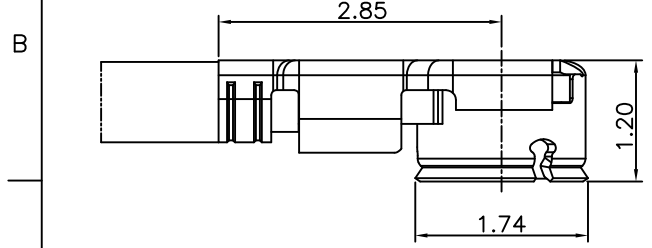
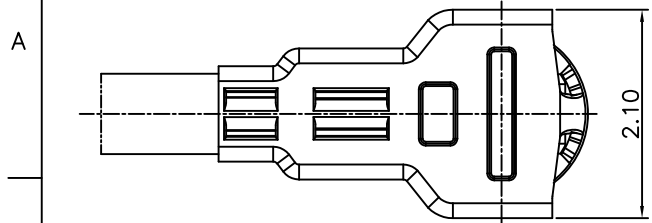
- 2.1. 接触阻抗: 20mΩ Max.
CONTACT RESISTANCE: 20mOHM Max.
- 2.2. 耐电压: 200V AC, 1 Minute;
DIELECTRIC WITHSTANDING VOLTAGE: 200V AC FOR 1MINUTE;
- 2.3. 绝缘阻抗: 500MΩ Min.
INSULATION RESISTANCE: 500MOHM Min.
- 2.4. 插拔耐久性: 30次 Min.
DURABILITY: 30TIMES Min.



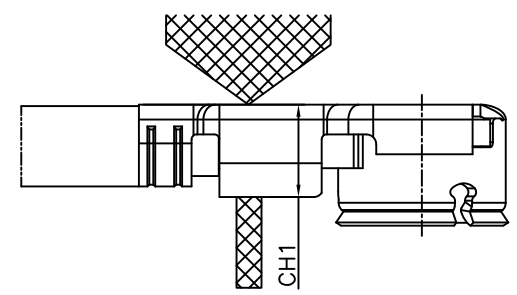
EXTEND USE			TITLE		深圳市金航标电子有限公司 SHENZHEN KINGHELM ELECTRON CO.,LTD.		
RF3 CABLE CONN			UNIT	RF3 CABLE CONN CUSTOMER DRAWING		DWG NO KH-IPEX3-0.81	
GENERAL TOLERANCE (1)		MATERIAL	APPD		P/N: (见说明)		
DIMENTION	ANGLES	QTY	CHD		SHEET		
0. ±0.30	0. ±3.0°	FINISHED	DRN *****		1/2	SCALE	REV
.0 ±0.20	.0 ±2.0°		2014.03.11		1:1	A	
.00 ±0.10	.00 ±1.0°						
.000 ±0.05							

1 2 3 4 5 6 7 8

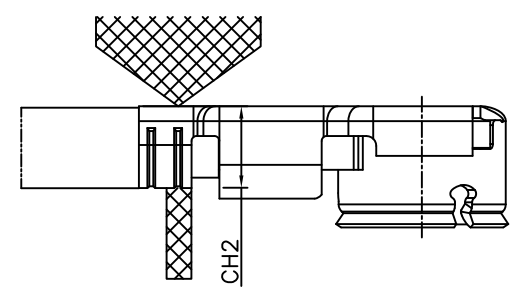
REV	ECN NO	DESCRIPTION	DATE	APPD
		SEE SHEET 1/3		



Applicable cable nominal dimension(OD0.81 RF Connector)

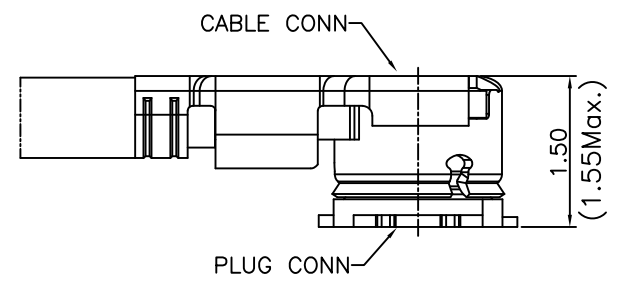


CH1: 0.83~0.86



CH2: 0.77~0.80(Ref.)

为保证产品引张强度针对不同线材
CH2尺寸需作调整



SCALE: 2:1

EXTEND USE		UNIT mm	TITLE		深圳市金航标电子有限公司 SHENZHEN KINGHELM ELECTRON CO.,LTD.	
RF3 CABLE CONN			RF3 CABLE CONN CUSTOMER DRAWING		DWG NO KH-IPEX3-0.81	
GENERAL TOLERANCE (M)		MATERIAL	APPD		P/N: (见说明)	
DIMENTION	ANGLES	QTY	CHD		SHEET	
0. ±0.30	0. ±3.0°		DRN *****		SCALE	REV
.0 ±0.20	.0 ±2.0°		2014.03.11		1:1	A
.00 ±0.10	.00 ±1.0°	FINISHED			2/2	
.000 ±0.05						

1 2 3 4 5 6 7 8

X-ON Electronics

Largest Supplier of Electrical and Electronic Components

Click to view similar products for [Antenna Accessories](#) category:

Click to view products by [Kinghelm](#) manufacturer:

Other Similar products are found below :

[HKIT-MTA9101-001](#) [YMST4](#) [MB830](#) [MB825](#) [MB820](#) [GRO](#) [W9909](#) [HKIT-MTA9100-001](#) [MABT8UM9](#) [HKIT-LPx-001](#) [GPS-17519](#)
[76002093](#) [MABT8M](#) [KH-IPEX3-0.81](#) [1.13-SMA-L=200mm](#) [1.13-SMA-L=300mm](#) [1.13-SMA-MHF-1](#) [PLUG-L=750mm](#) [FM2](#) [NS1535](#)
[VTPM800](#) [HS34RB](#) [SR4G031-150](#) [LBTB3400](#) [LBM9034](#) [GBR8PI](#) [GB8](#) [G8U](#) [G8PI](#) [G8N](#) [G8B](#) [BPXPHK](#) [ALLPMTP](#) [ALLPMTA](#) [G8](#)
[LTE Antenna Kit](#) [SR4W030-150](#) [GPSMBMM](#) [2740504](#) [SR4G031-100](#) [2702198](#) [SR4W030-100](#) [9091.99.0235](#) [LoRa Antenna](#) [EZ19](#) [EZ5-](#)
[16SW](#) [434MHz-SMA Flexible antenna](#) [W9908](#) [EZ3-18SW](#) [EZDM-166-18Z](#) [EZDM-166-39Z](#)