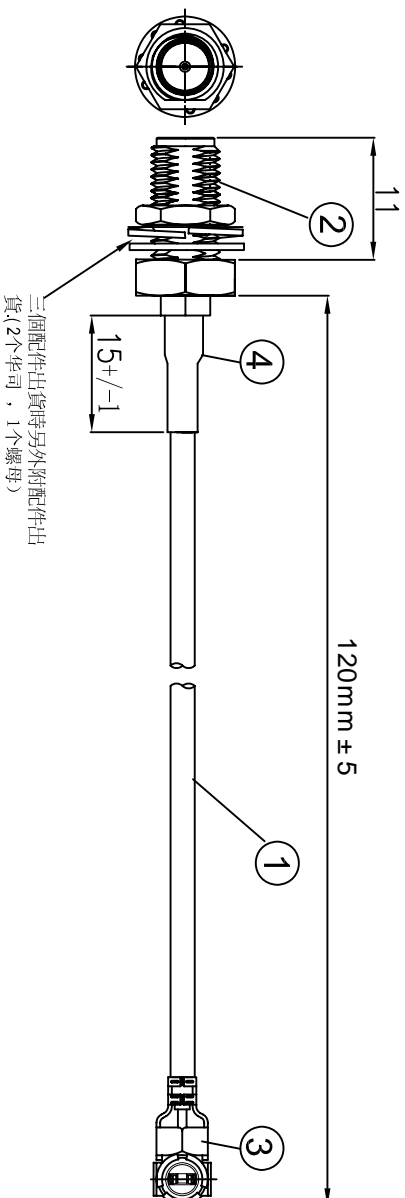


REVISONS			
REV/	NUMBER	DESCRIPTION	DATE
A		DESIGN	



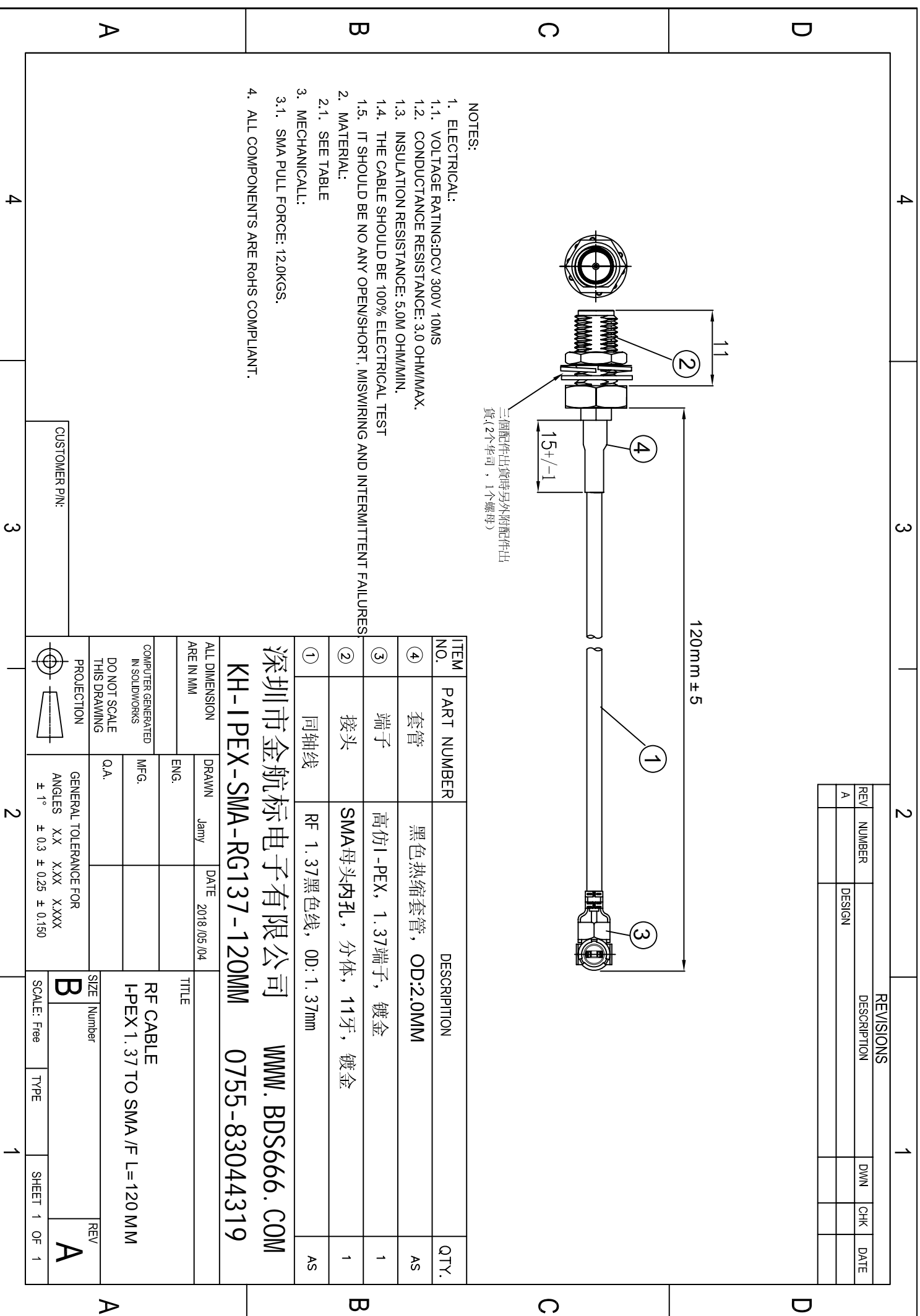
三個配件出貨時另外附配件出貨(2個熱縮管，1個螺母)

ITEM NO.	PART NUMBER	DESCRIPTION	QTY.
④	套管	黑色熱縮套管，OD:2.0MM	AS
③	端子	高仿I-PEX，1.37端子，鍍金	1
②	接头	SMA母頭內孔，分體，11牙，鍍金	1
①	同軸線	RF 1.37黑色線，OD: 1.37mm	AS

- NOTES:
- ELECTRICAL:
    - VOLTAGE RATING:DCV 300V 10MS
    - CONDUCTANCE RESISTANCE:3.0 OHM/MAX.
    - INSULATION RESISTANCE: 5.0M OHM/MIN.
    - THE CABLE SHOULD BE 100% ELECTRICAL TEST
    - IT SHOULD BE NO ANY OPENS/SHORT, MISWIRING AND INTERMITTENT FAILURES
  - MATERIAL:
    - SEE TABLE
  - MECHANICAL:
    - SMA PULL FORCE: 12.0KGS.
  - ALL COMPONENTS ARE ROHS COMPLIANT.

深圳市金航标电子有限公司 WWW.BDS666.COM  
 KH-IPEX-SMA-RG137-120MM 0755-83044319

ALL DIMENSION ARE IN MM		DRAWN	DATE	TITLE
DRAWN		Janny	2018/05/04	RF CABLE
ENG.				I-PEX 1.37 TO SMA / F L=120 MM
COMPUTER GENERATED IN SOLIDWORKS		MFG.		
DO NOT SCALE THIS DRAWING		Q.A.		
PROJECTION		GENERAL TOLERANCE FOR ANGLES XX XXX XXXX ± 1° ± 0.3 ± 0.25 ± 0.150		
CUSTOMER PIN:		SCALE: Free		



## X-ON Electronics

Largest Supplier of Electrical and Electronic Components

*Click to view similar products for [Antenna Accessories](#) category:*

*Click to view products by [Kinghelm](#) manufacturer:*

Other Similar products are found below :

[HKIT-MTA9101-001](#) [YMST4](#) [NMOHPCN518](#) [MB830](#) [MB825](#) [MB820](#) [GRO](#) [W9909](#) [HKIT-MTA9100-001](#) [MABT8UM9](#) [HKIT-LPx-001](#)  
[GPS-17519](#) [MABT8M](#) [KH-IPEX3-0.81](#) [HJ-IPEX1-1.13-SMA-L=100mm](#) [3C0224M01-003](#) [KHA\(RG1.37\)-TX300B-IPEX](#) [KHA\(RG1.37\)-](#)  
[TX80B-IPEX](#) [KHA\(RG1.37\)-TX140B-IPEX](#) [KH-IPEXA-SMAKWE-B060H](#) [KHA\(RG1.37\)-TX90B-IPEX](#) [KH-IPEX-SMA-RG137-120MM](#)  
[KH-SMAKW-IPEX4-RG1.13-B300](#) [KH-SMAKW-IPEX4-RG0.81-B90](#) [KH-SMAKW-IPEX4-RG1.37-B80](#) [KH-SMAKW-IPEX4-RG1.37-](#)  
[B160](#) [KH-SMAKW-IPEX-RG0.81-B70](#) [KH-SMAKW-IPEX-RG0.81-B140](#) [KHA-\(RG1.13\)-TX120-IPEX-221](#) [KHA\(RG1.37\)-TX70B-IPEX](#)  
[KH-SMAKW-IPEX-RG1.78-250](#) [KH-SMAKW-IPEX4-RG0.81-B200](#) [KH-SMAKW-IPEX4-RG1.13-B70](#) [KH-SMAKW-IPEX4-RG1.37-B90](#)  
[KH-SMAJ-221-RG1.78-160](#) [KH-SMAJ-221-RG1.13-B70](#) [KH-SMAJ-221-RG1.37-B90](#) [KH-FL2SMAK-IPEX-RG0.81-B50](#) [KH-FL2SMAK-](#)  
[IPEX3-RG0.81-B300](#) [KH-SMAKW-IPEX4-RG1.13-B140](#) [KH-SMAKW-IPEX-RG1.78-100](#) [KH-SMAKW-IPEX-RG0.81-B300](#) [KH-](#)  
[SMAKW-IPEX-RG1.37-B90](#) [KH-SMAKW-IPEX-RG1.37-B180](#) [KH-SMAKW-IPEX-RG1.78-60](#) [KH-SMAKW-IPEX3-RG0.81-B60](#) [KH-](#)  
[SMAKW-IPEX4-RG1.13-B90](#) [KH-SMAKW-IPEX-RG0.81-B160](#) [KH-\(RG0.81\)-TX80-IPEX3-221](#) [KH-SMAKW-IPEX4-RG0.81-B70](#)