

REV.	DESCRIPTION	APPD	DATE
△1	滑块底部增加避位槽		0112/10
△2	主体金手指侧面增加避位		0324/10

型号：KH-SD2829-U

NOTES:

1.MATERIAL:

HOUSING: HIGH TEMPERATURE THERMOPLASTIC
UL94V_0,COLOR:BLACK.

CONTACT: COPPER ALLOYS.

COVER: COPPER ALLOYS OR STEEL.

2.PLATING:

UNDERPLATE: NICKEL.

CONTACT AREA: GOLD OVER NICKEL.

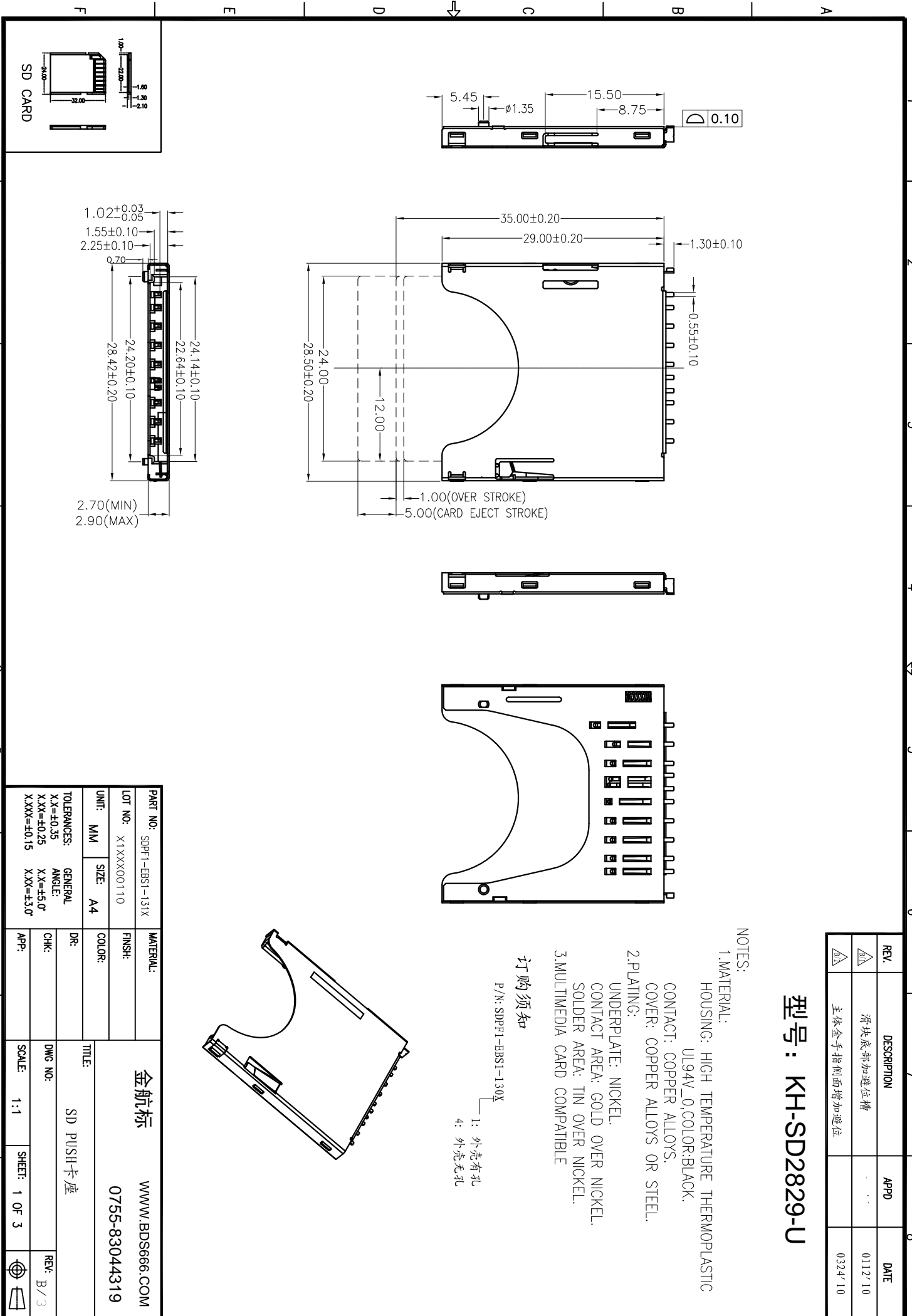
SOLDER AREA: TIN OVER NICKEL.

3.MULTIMEDIA CARD COMPATIBLE

订购须知

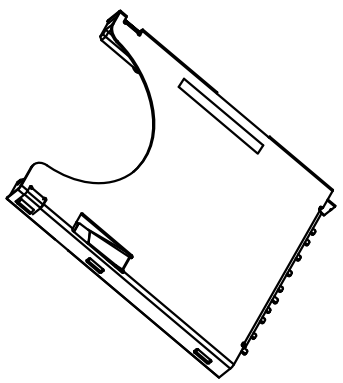
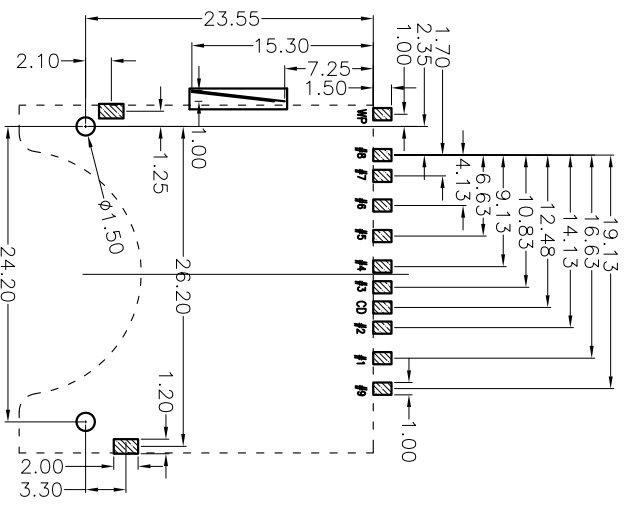
P/N: SDPF1-EBST-130X

- 1: 外壳有孔
- 4: 外壳无孔



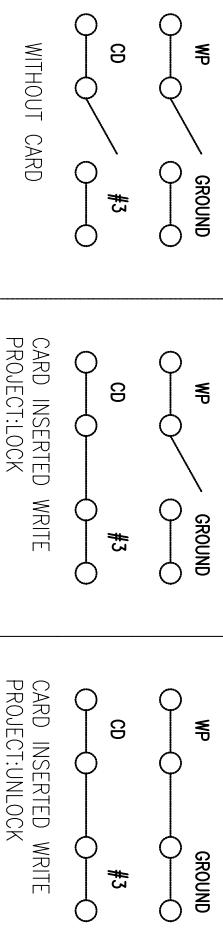
PART NO: SDPF1-EBST-131X		MATERIAL:	
LOT NO: X1XXXX00110	FINSH:	金航标 WWW.BDSS666.COM	
UNIT: MM	SIZE: A4	0755-83044319	
TOLERANCES:		TITLE: SD PUSH卡座	
X.X=±0.35	GENERAL ANGLE: X.X=±5.0°	DR:	DWG NO:
X.XX=±0.25	X.XX=±0.15	CHK:	SCALE: 1:1
X.XXX=±0.15		APP:	SHEET: 1 OF 3
		REV: B/3	

REV.	DESCRIPTION	APPD	DATE



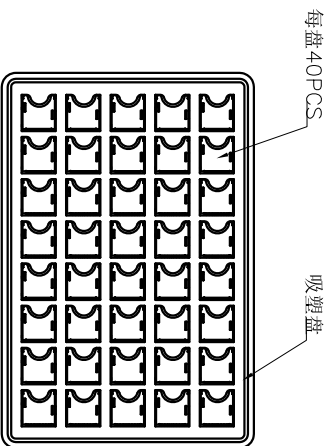
SD CARD PIN DESIGN

PIN NO.	NAME	TYPE	DESCRIPTION
#1	CD/DAT3	I/O/PP	CARD DETECT/DATA LINE(BIT3)
#2	CMD	PP	COMMAND/RESPONSE
#3	VSS1	S	SUPPLY VOLTAGE GROUND
#4	VDD	S	SUPPLY VOLTAGE
#5	CLK	I	CLOCK
#6	VSS2	S	SUPPLY VOLTAGE GROUND
#7	DAT0	I/O/PP	DATA LINE(BIT 0)
#8	DAT1	I/O/PP	DATA LINE(BIT 1)
#9	DAT2	I/O/PP	DATA LINE(BIT 2)



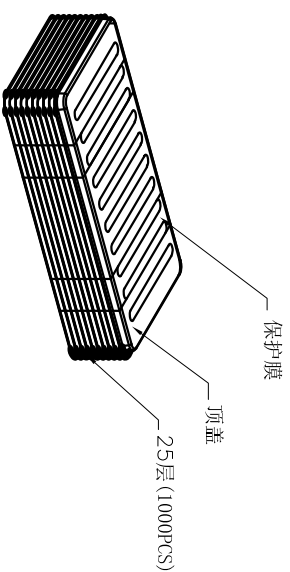
PART NO: SDPF1-EBS1-131X		MATERIAL:	
LOT NO: X1XX100110	FINSH:	WWW.BDS666.COM	
UNIT: MM	SIZE: A4	0755-83044319	
TOLERANCES:		TITLE: SD PUSH卡座	
X.X=±0.35	GENERAL	DRG NO:	
X.XX=±0.25	ANGLE: X.X=±5.0°	CHK:	REV: B/3
X.XXX=±0.15	X.XX=±3.0°	APP:	SCALE: 1:1
		SHEET: 2 OF 3	

REV.	DESCRIPTION	APPD	DATE

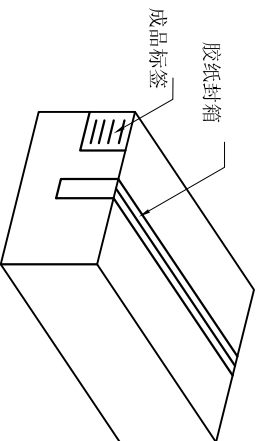


吸塑盘规格: 320*215*10

NO. 1

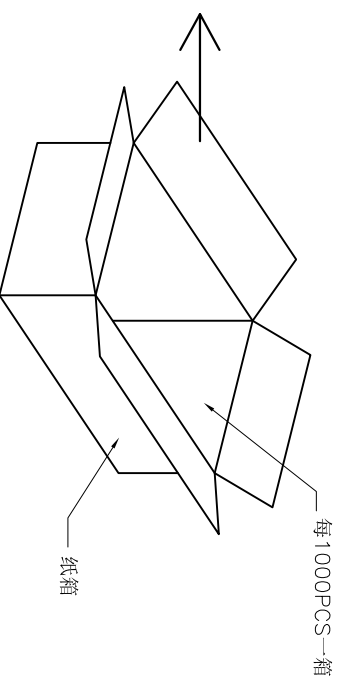


NO. 2



纸箱规格: 340*240*150

NO. 4



NO. 3

1. 材质要求:
 - 1.1 纸箱的材质为B=B; 外形尺寸为34*24*150M;
 - 1.2 PS盘的材质为PS, PS盘的外形尺寸为320*215*10MM;
2. 包装要求:
 - 2.1 每一盘装40PCS;
 - 2.2 每25盘累叠在一起, 共计1Kset; 上面需放一个空盘, 后用PE膜缠绕;
 - 2.3 把累叠好的PS盘放入纸箱中;
 - 2.4 把包装好的成品打包封箱, 并在纸箱中贴上标签;

PART NO: SDPF1-EBS1-131X		MATERIAL:	
LOT NO: X1XX100110		FINSH:	
UNIT: MM	SIZE: A4	COLOR:	
TOLERANCES:		GENERAL	
X.X=±0.35	X.XX=±0.25	X.X=±5.0°	
X.XXX=±0.15		X.XX=±3.0°	
DR: 杨凯	09/28/09	TITLE: SD PUSH卡座	
CHK:		DWG NO: FP-090015	REV: B/3
APP:		SCALE: 1:1	SHEET: 3 OF 3
金航标		WWW.BDS666.COM	
0755-83044319			

X-ON Electronics

Largest Supplier of Electrical and Electronic Components

Click to view similar products for [Memory Card Connectors](#) category:

Click to view products by [Kinghelm](#) manufacturer:

Other Similar products are found below :

[6407-249V-25273P](#) [6407-249V-25343P](#) [6426-201-21343](#) [69.920.0553.0](#) [MCR60A-98D-2.54DSA\(70\)](#) [809180410000000](#) [DM3AT-SF-PEJM5\(41\)](#) [IC11S-BUR-PNEJL\(71\)](#) [C70210M0083692](#) [2041353-2](#) [308-DS1P0811-192](#) [HM2P09PDR360N9LF](#) [10014744-011TLF](#) [11327-001](#) [11327-002](#) [NX1-32T-KT3K\(05\)](#) [95622-003LF](#) [84648-056HLF](#) [CCM03-3109 B LFT](#) [MS3116J10-6PW](#) [2309923-1](#) [61126-050CAHLF](#) [GTFP08432B1HR](#) [G85D1160022HHR](#) [SCE2MSDZN76A121SN](#) [10014744-011ALF](#) [10014744-011LF](#) [10057542-1211FLF](#) [10067972-000LF](#) [10067972-050LF](#) [10122302-20110LF](#) [G85D1162022HHR](#) [TF-05A](#) [M6014-12](#) [SMN-304-ARP6](#) [MIS11-S1F1-2000-A](#) [SMN-308-ARSP7](#) [MCS-302S-KT1B](#) [SMN-308-ACSP7](#) [K-DYX-008](#) [K-DYX-004](#) [HYCW126-TF18-150B](#) [C7024-03](#) [SMO-1030](#) [MCS-110-KT](#) [SIM-217](#) [SNO-1355-KT](#) [SMO-1025-P10](#) [SIM-211S-P6](#) [SNO-1440](#)