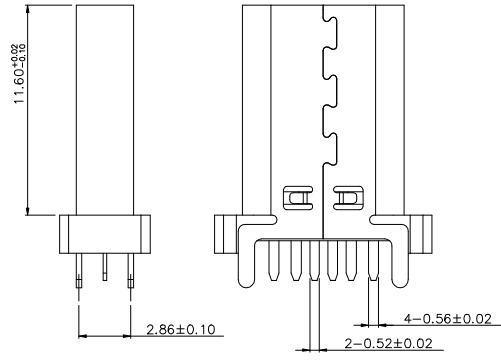
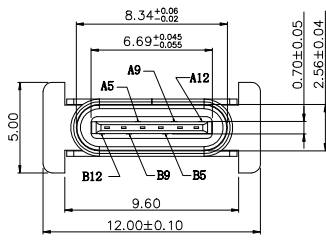
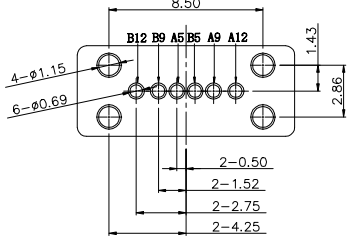
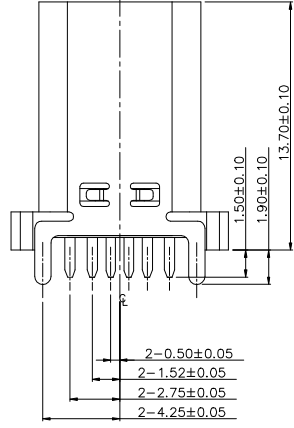


RoHS Compliant Halogen Free

REV.	DESCRIPTION	SIGN	DATE
A	NEW	Fred.T	19/08/15

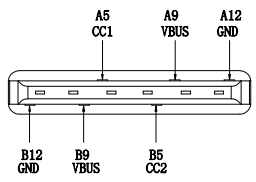
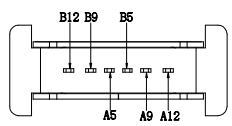


Pin	Signal Name	Mating Sequence	Pin	Signal Name	Mating Sequence
A1			B12	GND	First
A2			B11		
A3			B10		
A4			B9	V <sub>bus</sub>	First
A5	CC1	Second	B8		
A6			B7		
A7			B6		
A8			B5	CC2	Second
A9	V <sub>bus</sub>	First	B4		
A10			B3		
A11			B2		
A12	GND	First	B1		
SHELL	GND		SHELL	GND	



RECOMMENDED P.C.B. LAYOUT  
TOLERANCE UNSPECIFIED ±0.05mm

**NOTES:**  
**特性: Specifications**  
**电器 Electrical:**  
 接触阻抗: 初始最大不超过40mΩ Max, 测试后变化值不超过10mΩ Max  
 耐电压: AC200V 60S/MIN, 0.5mA Max; DC500V, 60S/MIN, 100Ω Max  
 绝缘阻抗: 100M ohms MIN  
 额定电流: 2A MAX  
 额定电压: 10V MAX  
**材料: Material:**  
 Molding: LCP料黑色耐高温塑胶  
 端子: C2680 T=0.20mm  
 外壳: SUS201 T=0.30mm  
**电镀规格:**  
 端子: 半金锡, 接触点镀金1u", 焊线处镀雾锡40-80u".  
 外壳: 镀镍80u"  
**环保要求: ROHS, REACH标准.**



UNLESS OTHERWISE SPECIFIED, GENERAL TOLERANCE: X.xxx ±0.10 X.xx ±0.20 X.x ±0.30 X. ±0.38 ANGULAR: X.xx ±1° X.x ±3° X. ±5°	NAME (INTENDED USE)	深圳市金航标电子有限公司		WWW.BDS666.COM	
	CUSTOMER DRAWING	KH-TYPE-C-4L13.7-6P		0755-83044319	
	THESE DRAWINGS AND SPECIFICATIONS ARE THE PROPERTY OF HUI YI TECHNOLOGY CO., LTD. AND SHALL NOT BE REPRODUCED, COPIED OR USED IN ANY MANNER WITHOUT THE PRIOR WRITTEN CONSENT OF HUI YI TECHNOLOGY CO., LTD.	TITLE:	GPIN TYPE C 立插母座H=13.7mm		
	THIRD ANGLE PROJECTION	UNIT:	SCALE:	SIZE:	SHEET:
	mm	1:1	A4	1/2	

## X-ON Electronics

Largest Supplier of Electrical and Electronic Components

*Click to view similar products for [USB Connectors](#) category:*

*Click to view products by [Kinghelm](#) manufacturer:*

Other Similar products are found below :

[950](#) [MUSBD11135](#) [17-200721](#) [217450-1](#) [KMBVX-TH-5S-B30](#) [KUSBX-AS2N-W](#) [KUSBX-SMT2AP1S-W30](#) [935](#) [957](#) [30-498-6](#) [SK-60A-2](#)  
[1734082-1](#) [30-470](#) [30-489](#) [30-541](#) [A-USB A-2P-C](#) [MIKROE-1451](#) [USBFTVSCCG](#) [1-1734084-2](#) [10135326-001LF](#) [4198](#) [USB-A-D-VT](#)  
[USB-A-S-RA-TSMT](#) [1310-1023-02](#) [690-024-633-031](#) [UB-20PMFP-LC7001](#) [17-200011](#) [UB-20AFMM-LL7A01](#) [1040870124](#) [CAP-](#)  
[WCCMLPB1](#) [CAP-WCCMLPC1](#) [2274475-3](#) [UB-20BMFA-SL8001](#) [914-614A2025S10200](#) [USB3FTV7SAGF059](#) [ZX40-B-5S-1500-](#)  
[STDA\(30\)](#) [GSB3116344HR](#) [USB3FTV2SAZNF459](#) [USB3FTV7SAZNF459](#) [U221-041N-1WVS62-F5D](#) [HYCW153-USBD05-500B](#)  
[HYCW219-USBD05-075B](#) [HYCW148-USBD05-117B](#) [HYCW149-USBD05-740B](#) [HYCW204-USBD05-108B](#) [HYCW214-USBA04-113B](#)  
[HYCW213-USBA04-113B](#) [UB-20AMFM-SL7A01](#) [KMMX-BSMT35S-1-B30TR](#) [2345986-1](#)