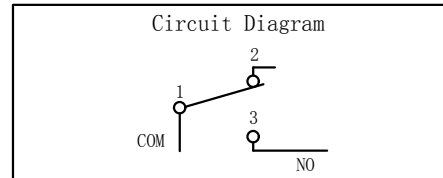
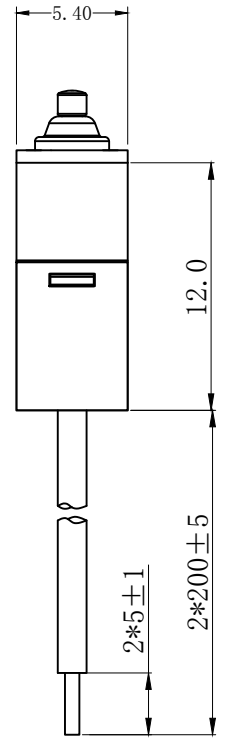
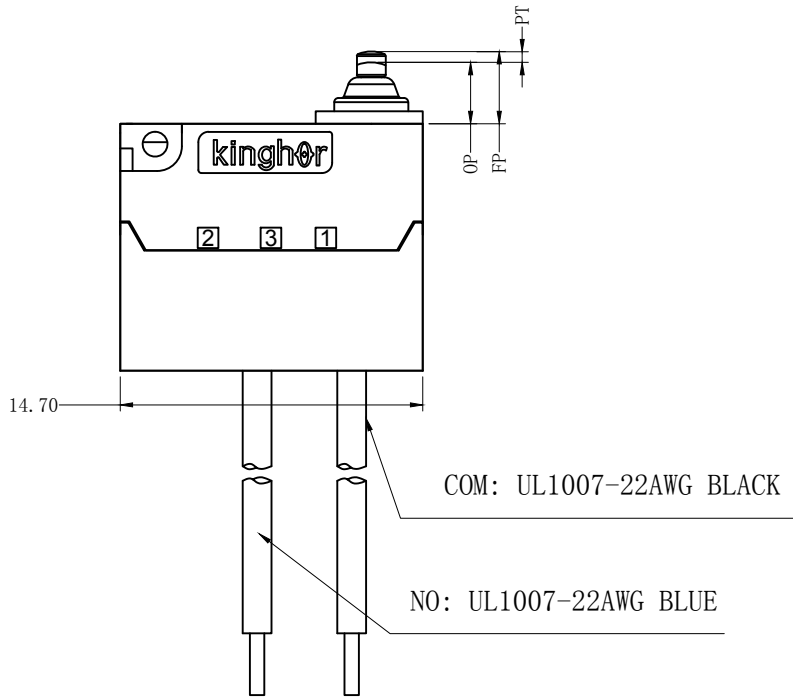
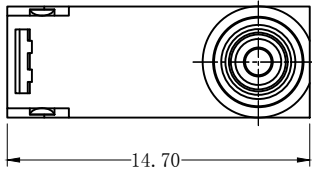


| REV | MARK | DESCRIPTION | DRAFTED. BY | DATE |
|-----|------|-------------|-------------|------|
|     |      |             |             |      |
|     |      |             |             |      |
|     |      |             |             |      |



| CHARACTERISTICS       |                |
|-----------------------|----------------|
| OPERATING FORCE (OF): | 130gf Max.     |
| RELEASE FORCE (RF):   | 13gf Min.      |
| OPERATING POSITION:   | 3.05 ± 0.2 mm. |
| PRE TRAVEL:           | 0.8mm Max.     |
| DIFFERENTIAL TRAVEL:  | 0.2mm Max.     |
| FREE POSITION:        | 3.65mm Max.    |

| ELECTRICAL DATA       |                       |
|-----------------------|-----------------------|
| <b>RATING</b>         | <b>OPERATING LIFE</b> |
| 3A 12VDC              | 100,000 CYCLES        |
| 0.1A 48VDC 125/250VAC | 100,000 CYCLES        |

|                        |                       |
|------------------------|-----------------------|
| <b>MECHANICAL LIFE</b> | <b>500,000 CYCLES</b> |
| <b>GAP TYPE</b>        | <b>MICRO</b>          |
| <b>OPERATING TEMP</b>  | <b>-25°C ~ +85°C</b>  |
| <b>WATERPROOF</b>      | <b>IP67</b>           |

| OUTLINE DRAWING    |                               |             |           |
|--------------------|-------------------------------|-------------|-----------|
| <b>TITLE</b>       | <b>H3 SERIES MICRO SWITCH</b> |             |           |
| <b>MODEL</b>       | <b>H3-A1</b>                  |             |           |
| <b>PART NO.</b>    | <b>H3-A1-1B00W1-2-200</b>     |             |           |
| <b>DRAFTED BY</b>  | Bing Wang                     | <b>DATE</b> | 2020-6-15 |
| <b>CHECKED BY</b>  | Hua Bai                       | <b>DATE</b> | 2020-6-15 |
| <b>APPROVED BY</b> | Hong Chen                     | <b>DATE</b> | 2020-6-15 |

| TOLERANCE UNLESS OTHERWISE SPECIFIED |      |      |       |        |         |             |  |
|--------------------------------------|------|------|-------|--------|---------|-------------|--|
| ≤3                                   | 1~3  | 3~10 | 10~30 | 30~100 | 100~200 | ANGLE       |  |
| ±0.2                                 | ±0.3 | ±0.4 | ±0.6  | ±1.0   | ±1.5    | ±3.0°       |  |
|                                      |      |      |       |        |         | SCALE       |  |
|                                      |      |      |       |        |         | UNIT        |  |
|                                      |      |      |       |        |         | VERSION REV |  |
|                                      |      |      |       |        |         | A1          |  |

**KINGHOR**  
SWITCHES AND CONTROL EXPERT

## X-ON Electronics

Largest Supplier of Electrical and Electronic Components

*Click to view similar products for [Basic / Snap Action Switches](#) category:*

*Click to view products by [Kinghor](#) manufacturer:*

Other Similar products are found below :

[5SM901-S12](#) [5SM9-S12N195](#) [602EN532](#) [602EN535-RB](#) [602HE5-RB1](#) [604HE223-6B](#) [624HE17-RB](#) [6HM82](#) [6SE1](#) [6SX1-H58](#) [71051](#) [714-0293](#) [MBH2731](#) [79211923](#) [79218589](#) [MIL30126AB6BBMD4A12XAU](#) [ML-1155](#) [ML-1376](#) [831010C3.0](#) [831090C2.EL](#) [83131904](#) [84212012](#) [8AS239](#) [8HM73-3](#) [8SX26-H33](#) [914CE1-6G](#) [11SM1077-H4](#) [11SM1077-H58](#) [11SM1-TN107](#) [11SM405](#) [11SM703-T](#) [11SM8423-H2](#) [11SX37-T](#) [11SX48-H58](#) [11SM2442-T](#) [11SM76-T](#) [11SM77-H58](#) [11SM77-T](#) [11SM863-T](#) [11SM866](#) [121EN188-R](#) [1245.0120](#) [125EN56-RB](#) [D433V3RD](#) [1267.0101](#) [1267.7101](#) [D4BFC1](#) [12SM4-T2](#) [12SX2-T2](#) [1298.0101](#)