

KVR667D2S5/2G

2GB 256M x 64-Bit DDR2-667

CL5 200-Pin SODIMM

DESCRIPTION

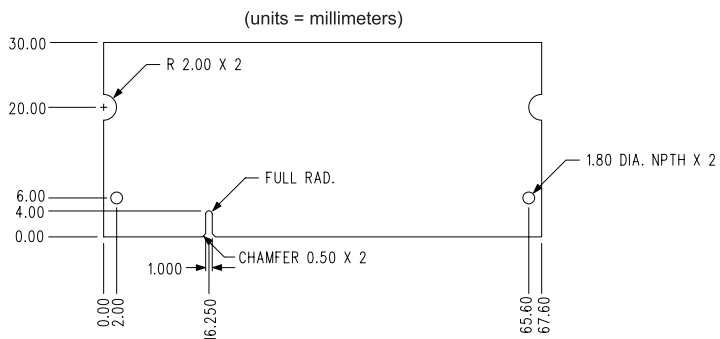
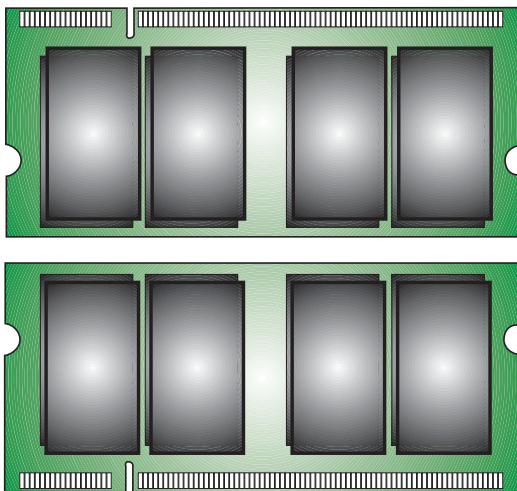
This document describes ValueRAM's 256M x 64-bit 2GB (2048MB) CL5 DDR2-667 SDRAM (Synchronous DRAM) memory module. The components on this module include sixteen stacked 128M x 8-bit DDR2-667 SDRAM. This 200-pin SODIMM uses gold contact fingers and requires +1.8V. The electrical and mechanical specifications are as follows:

SPECIFICATIONS

Clock Cycle Time (tCK) CL=5	3ns (min.) / 8ns (max.)
Row Cycle Time (tRC)	54ns (min.)
Refresh to Active/Refresh Command Time (tRFC)	127.5ns
Row Active Time (tRAS)	39ns (min.) / 70,000ns (max.)
Single Power Supply of	+1.8V (+/- .1V)
Power	1.944 W (operating)
UL Rating	94 V - 0

Note: The module defined in this data sheet is one of several configurations available under this part number. While all configurations are compatible, the DRAM combination and/or the module height may vary from what is described here.

Figure 1: KVR667D2S5/2G 200-Pin SODIMM



X-ON Electronics

Largest Supplier of Electrical and Electronic Components

Click to view similar products for [kingston manufacturer](#):

Other Similar products are found below :

[SDCA3/32GB](#) [SM2280S3G2/120G](#) [04EPOP08-NL3DM627-B02U](#) [SD4/32GB](#) [SEDC400S37/960G](#) [EMMC16G-W525-X01U](#) [08EPOP04-NL3DT227-A01U](#) [SEDC1000H/1600G](#) [04EMCP04-NL2DM627-Z02U](#) [08EMCP04-NL3DT227-A01U](#) [B1621PM1WDGTKR-U](#)
[B5116ECMDXGGB-U](#) [EMMC04G-W100-E08U](#) [SDA10/128GB](#) [KVR13N9S8H/4](#) [D5128EETBPGGBU-U](#) [SDA3/32GB](#)
[D5128EC4BPGGBUI-U](#) [SKC400S37/1T](#) [KVR21R15D4/16](#) [CF/256](#) [SUV400S37/240G](#) [SKC400S37/512G](#) [EMMC04G-M627-A01](#)
[BOXSIZE 4](#) [BOXSIZE 3](#)