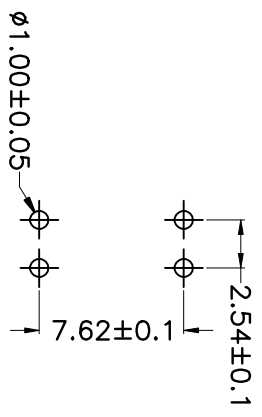
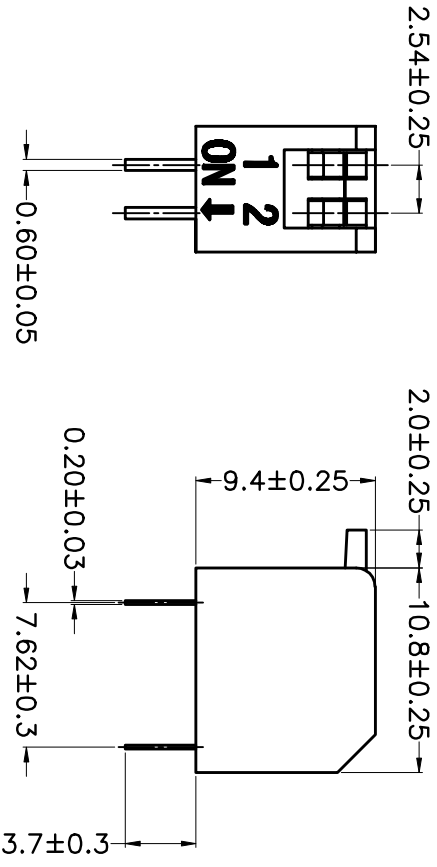
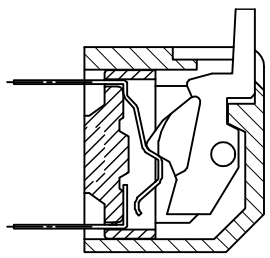
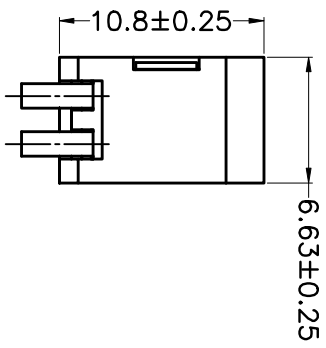


PRODUCT NO.	DSDP02LHG1
RoHS compliant	



PCB Layout

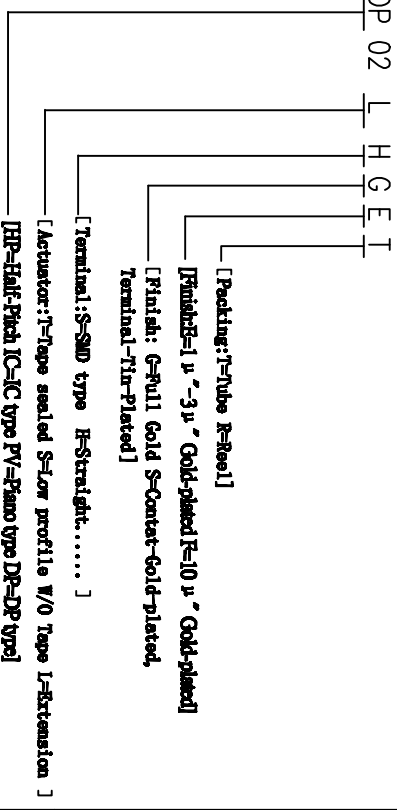
- Note:**
- All dimensions are in millimeters.
 - General tolerance: $\pm 0.2\text{mm}$.
 - Material:

Base: UL94V-0 PBT Thermoplastic (Black).
 Cover: UL94V-0 PBT Thermoplastic (Black/Red/Blue).
 Actuators: UL94V-0 PA66 Thermoplastic (White).
 Contact plating: Gold plating over nickel.
 Pitting material: Epoxy.

- Electrical
 Electrical: 2000 Operations per switch 24/VDC, 25mA.
 Non-Switching Rating: 100mA, 50/VDC.
 Switching Rating: 25mA, 24/VDC
 Contact Resistance: 100 mΩ Max. at initial.
- Mechanical
 Mechanical life: 2000 Operations per switch.
 Operation Temp: -20°C to 70°C.
 Storage Temp: -40°C to 85°C.

6. PART NUMBER DESCRIPTION:

DS DP 02 L H G E T



SCHEMATIC(TYP.)

TOLERANCE UNLESS OTHERWISE SPECIFIED	INSPECTION COPY	PROJECTION				
LINER	ANGLES		FILE NO.	UNIT	SCALE	SHEET
0 ± 0.30	0 ± 1°		DSDP02LHG1-A	mm	1:1	1
.00 ± 0.20	.0 ± 0.5°		SIZE	SCALE	SHEET	REV.
.000± 0.10	.00±		A4	mm	1:1	A
DESIGN	LU ER XIN	2013/07/02	PRODUCT FAMILY	DSDP SERIES		
DRAWING			PRAT NO.	DSDP02LHG1		
CHECK			FILE NO.	DSDP02LHG1-A		
APPRO.			SIZE	mm		

X-ON Electronics

Largest Supplier of Electrical and Electronic Components

Click to view similar products for [DIP Switches/SIP Switches](#) category:

Click to view products by [Kingtek Industrial](#) manufacturer:

Other Similar products are found below :

[79B10T](#) [8136-475G4T](#) [G7G-1A2-CB-DC12](#) [H7CZL8AC100240](#) [DRR60016](#) [DRS4016](#) [1825008-1](#) [1825444-1](#) [200183](#) [206002](#) [219-6LPSTRF](#) [25.350.0653.0](#) [SBS 5004 TG](#) [SDA10H1BDA](#) [97R06ST](#) [A2C-2A5](#) [1825444-7](#) [ADE08SA04](#) [ADE12S04](#) [192960010](#) [206005RAS](#) [206007](#) [2-1825058-8](#) [25.330.0653.1](#) [25.352.0353.0](#) [CXDRIVEV2X](#) [IKN0600000](#) [IKN0800000](#) [LA2-002-DC24](#) [DRD10CRAE04](#) [DSR02T](#) [DSS 208 N](#) [E2FMX2D1M1TGJ03M](#) [NDI10H](#) [219-9MSTP](#) [EPM02FV](#) [206010RAST](#) [NDS08V](#) [76SB05](#) [TD06H0SK1](#) [Z7.255.9027.0](#) [1-1825058-3](#) [1825428-4](#) [219-10LPSTF](#) [E3ZG6111D03M](#) [G4D212PUSTV2DC5](#) [EPG301BT06](#) [219-7LPSTRF](#) [1-1825058-6](#) [E3TSL23M5J03M](#)