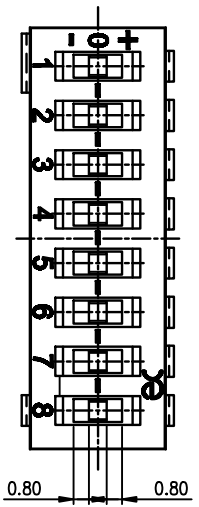
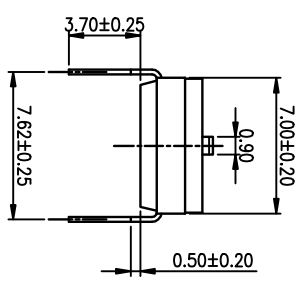
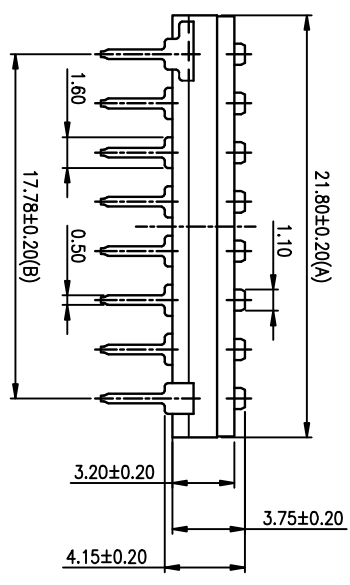
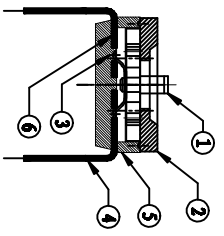
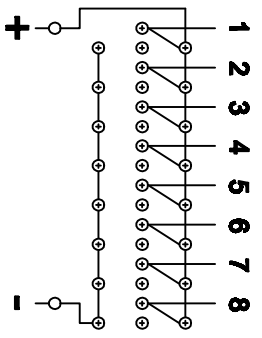
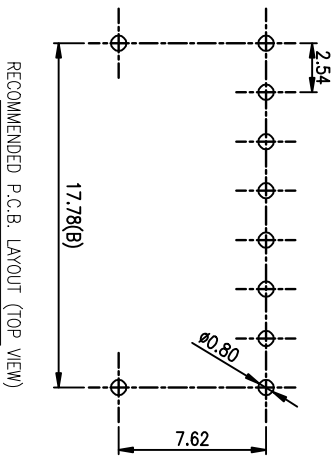


PRODUCT NO. DSDT08LHGET
RoHS compliant

REV.	ECN NO.	DR	DATE
A	New	H H	14/12/31



POS.	DIMENSIONS	
	A	B
4P	11.64	7.62
5P	14.18	10.16
8P	21.80	17.78
9P	24.34	20.32
10P	26.88	22.86

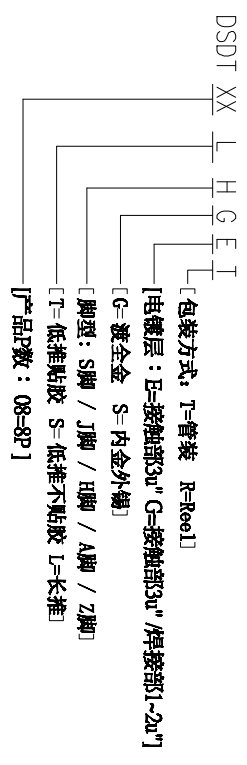


NOTES :

1. Specification:
 - 1>. Operating force: 1000g/f Max
 - 2>. Mechanical Life: 3000cycles minimum
 - 3>. Electrical Life: 2000cycles minimum
- Contact Rating:
 - 1>. Switching: 25mA, 24VDC
 - 2>. Non Switching: 100mA, 50VDC
- Contact Resistance:
 - 1>. Initial: 50mOhm Max.
 - 2>. After Life Test: 100mOhm Max.

2. PLATING:
 - GOLD FLASH 1u"(min.) SOLDER TAIL, 3u" GOLD PLATING ON THE CONTACT AREA, WITH 50u" NICKEL UNDERPLATING OVERALL.

3. PART NUMBER DESCRIPTION



Number	Part Name	Material	Finished
①	Actuator	UL94 V0	White
②	Cover	UL94 V0	Black
③	Movable	Copper Alloy	3u"Gold
④	Terminal	Brass	1u"Gold
⑤	Base	UL94 V0	Black
⑥	Terminal Contact	Brass	3u"Gold

TOLERANCE UNLESS OTHERWISE SPECIFIED			INSPECTION COPY			
LINER	ANGLES	PROJECTION	COPY			
0 ± 0.25	0 ± 2'					
.00 ± 0.15	.0 ± 1'					
.000 ± 0.10	.00 ± 0.5'					
DESIGN	CHI HUAI HE	2015/01/22				
DRAWING						
CHECK						
APPRO.						
东莞市广誉实业有限公司 Dongguan Kingtek Industrial Co., Ltd.			TITLE BY DSDT SERIES PITCH 2.54mm PRODUCT FAMILY DSDT SERIES PRAT NO. DSDT08LHGET			
FILE NO.	DSDT08LHGET-A	SIZE	UNIT	SCALE	SHEET	REV.
A4	mm	1 : 1	1 OF 1	A		

X-ON Electronics

Largest Supplier of Electrical and Electronic Components

Click to view similar products for [DIP Switches/SIP Switches](#) category:

Click to view products by [Kingtek Industrial](#) manufacturer:

Other Similar products are found below :

[79B10T](#) [8136-475G4T](#) [G7G-1A2-CB-DC12](#) [H7CZL8AC100240](#) [DRR60016](#) [DRS4016](#) [1825008-1](#) [1825444-1](#) [200183](#) [206002](#) [219-6LPSTRF](#) [25.350.0653.0](#) [SBS 5004 TG](#) [SDA10H1BDA](#) [97R06ST](#) [A2C-2A5](#) [1825444-7](#) [ADE08SA04](#) [ADE12S04](#) [192960010](#) [206005RAS](#) [206007](#) [2-1825058-8](#) [25.330.0653.1](#) [25.352.0353.0](#) [CXDRIVEV2X](#) [IKN0600000](#) [IKN0800000](#) [LA2-002-DC24](#) [DRD10CRAE04](#) [DSR02T](#) [DSS 208 N](#) [E2FMX2D1M1TGJ03M](#) [NDI10H](#) [219-9MSTP](#) [EPM02FV](#) [206010RAST](#) [NDS08V](#) [76SB05](#) [TD06H0SK1](#) [Z7.255.9027.0](#) [1-1825058-3](#) [1825428-4](#) [219-10LPSTF](#) [E3ZG6111D03M](#) [G4D212PUSTV2DC5](#) [EPG301BT06](#) [219-7LPSTRF](#) [1-1825058-6](#) [E3TSL23M5J03M](#)